

YOU ARE RESPONSIBLE FOR THE SAFETY OF YOUR LOADS

Be certain you completely understand the use of this data and your tools.

START GRAINS This is the maximum starting load.

VOLUME CC This is the volume per cubic centimeter of the START GRAIN charge for use with a Lee Perfect Powder Measure. Check with a scale to be sure the setting is correct.

DIPPER This is the largest LEE DIPPER you can use. Be sure you use the correct dipper. The dipper must be filled and struck level.

NEVER EXCEED GRAINS These must be weighed. DO NOT exceed.

VELOCITY Listed velocity is for NEVER EXCEED GRAINS.

$$\text{VELOCITY FOR OTHER CHARGES} = \frac{\text{CHARGE IN GRAINS}}{\text{NEVER EXCEED GRAINS}} \times \text{VELOCITY}$$

PRESSURE The maximum pressure recommended by the powder manufacturer.

MINIMUM OAL This is the shortest, safe Over All Length with maximum charges.

If you cannot find a charge for the exact weight bullet you have selected, use the data for the next heavier bullet. The velocity will be about the same and the pressure will be less.

Except for Winchester 296 the powder manufacturer recommends that you start with a reduced load and work up to the max load. They also recommend using magnum primers with 296.

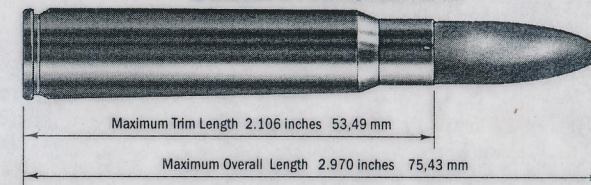
90732

LEE RELOADING DIES
7.65x53 Mauser
 Belgian-Argentine
 LEE PRECISION, INC.

Exclusive
 THIS SET INCLUDES A
LEE FACTORY CRIMP DIE

LEE
RELOADING DIES

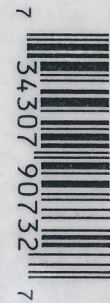
7.65x53 Mauser
 BELGIAN-ARGENTINE



LARGE RIFLE PRIMERS BULLET DIAMETER .311 inches 7.90 mm

GUARANTEED ACCURACY OR YOUR MONEY BACK

We guarantee no other brand of full length sizing dies, regardless of price, will load ammunition with less bullet runout than LEE RIFLE DIES or your money will be refunded.



CE1802

CHARGE TABLE · 7.65x53 Belg-Arg. Mauser

POWDER TYPE	STARTING LOADS				NEVER EXCEED GRAINS	VEL. FPS	PRESS. PSI	MINIMUM OAL
	START GRAINS	VOLUME CC	AUTO DISK	LEE DIPPER				
150 GRAIN BULLET								
ACCUR 2495BR	42.6	3.18	DBLD	3.1	47.5	2768	48800	2.850
ACCUR 2520	40.4	2.99	DBLD	2.8	46.5	2763	50300	2.850
ACCUR 2230	40.8	2.68	DBLD	2.5	45.0	2740	48200	2.850
ACCUR 2460	40.5	2.66	DBLD	2.5	45.0	2701	48600	2.850
ACCUR 2700	48.5	3.32	NA	3.1	51.5	2697	46400	2.850
ACCUR 2015BR	37.9	2.77	DBLD	2.5	41.5	2690	47900	2.850
BL-C(2)	38.7	2.50	DBLD	2.5	43.0	2650	49999	2.750
H414	44.1	2.92	DBLD	2.8	49.0	2648	49999	2.750
H335	38.7	2.50	DBLD	2.5	43.0	2639	49999	2.750
H4350	44.1	3.20	DBLD	3.1	49.0	2614	49999	2.750
H4895	38.7	2.82	DBLD	2.8	43.0	2597	49999	2.750
H380	41.4	2.86	DBLD	2.8	46.0	2585	49999	2.750
ACCUR 4350	48.0	3.55	NA	3.4	48.0	2326	30600	2.850
175 GRAIN BULLET								
H4831	47.7	3.46	NA	3.4	53.0	2456	49999	2.750
H4350	42.3	3.07	DBLD	2.8	47.0	2454	49999	2.750
H414	42.3	2.80	DBLD	2.8	47.0	2452	49999	2.750
H380	40.5	2.80	DBLD	2.8	45.0	2447	49999	2.750
BL-C(2)	36.0	2.32	DBLD	2.2	40.0	2375	49999	2.750
H335	36.0	2.32	DBLD	2.2	40.0	2372	49999	2.750
H4895	36.0	2.62	DBLD	2.5	40.0	2351	49999	2.750
180 GRAIN BULLET								
ACCUR 2520	38.5	2.85	DBLD	2.8	45.0	2570	51100	2.850
ACCUR 2495BR	42.3	3.17	DBLD	3.1	46.0	2542	47500	2.850
ACCUR 2460	37.8	2.48	DBLD	2.2	43.0	2519	49700	2.850
ACCUR 2230	37.7	2.48	DBLD	2.2	42.5	2503	49300	2.850
ACCUR 2015BR	35.9	2.62	DBLD	2.5	40.0	2468	48700	2.850
ACCUR 2700	46.5	3.19	DBLD	3.1	48.0	2463	45100	2.850
ACCUR 4350	47.0	3.48	NA	3.4	47.0	2243	32700	2.850

DBLD = Double Disk, see instruction with your Auto-Disk powder measure.

NA = None Available © Copyright 01-23-1995 Lee Precision Inc.

For a full refund, return your dies to the factory with your dated sales slip and data showing comparison test with name of other brand.

PARTS LIST

Sizing Die, assembly SD1662\$12.00	Bullet Seater Punch SB19992.00
Decapper SE23583.00	Shell Holder 905193.98
Decapper Clamp SD21511.50	Powder Measure PM14091.00
Lock Ring SD21521.00	Chg. Table, Instructions CE18021.00
Bullet Seating Die, assy SB1478 ..12.00	Round Die Box SD20472.50
Adjusting Screw SB21541.50	

WHEN ORDERING PARTS, SPECIFY FOR 1/4 x 14 DIE SETS AND INDICATE CALIBER.

CAUTION

Ammunition reloading can be dangerous if done improperly and should not be attempted by persons not willing and able to read and follow instructions exactly. Children should not be permitted to reload ammunition without strict parental supervision. Always wear safety glasses when reloading and shooting. Ammunition loaded with these tools and data should only be used in modern guns in good condition. We do not accept responsibility for ammunition loaded with these tools or data as we have no control over the manufacture and storage of components or the loading procedure and techniques. Primers and gun powders, like gasoline and matches, can be dangerous if improperly handled or misused.

GUARANTEE

LEE RELOADING PRODUCTS are guaranteed not to wear out or break from normal use for two full years or they will be repaired or replaced at no charge if returned to the factory. Any Lee product of current manufacture, regardless of age or condition, will be reconditioned to new, including a new guarantee, if returned to the factory with payment equal to half the current retail price.

Speer advises that Speer bullets should not be used with certain Lee Dies. All other brands work great!

LEE LEE PRECISION, INC.
 4275 HWY. U HARTFORD WISCONSIN 53027
 Printed in U.S.A.

LEE RELOADING DIES

COMPLETE INSTRUCTIONS FOR LEE RIFLE DIE SETS

1 PREPARE YOUR CASES

Inspect your cases while lubricating them. Discard all cases with split necks, indications of head separation or other defects. Wipe on a thin film of LEE CASE LUBRICANT with your fingers. Fingers are the best way of lubing a case as any grit that could damage the die is wiped away. **Be sure to lube the inside of the case neck with a cotton swab.** The case may be immediately sized, or let the lube dry.

LEE LUBE can be thinned with up to four parts water for easier application and greater economy. If thinned, let the case dry before sizing.

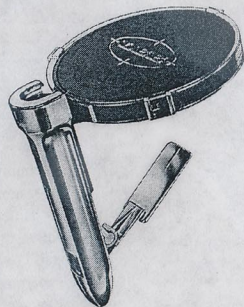
All Lee Dies have finger tighten lock rings that lock to both the die and press. When removing die, always loosen by the lock ring. This insures the lock will maintain its exact setting for future use.



IMPORTANT If for any reason you do not use LEE RESIZING LUBRICANT, be very careful not to contaminate the powder or primers. Other brands are oil base and they have serious, detrimental effects on powder and primers. Because of the stickiness, they also attract grit that can damage the die. LEE RESIZING LUBRICANT costs less and is so superior that is worth the effort to insist upon it, or order from the factory.

3 PRIME

The Auto-Prime is hand held and requires special, but inexpensive shell holders.



Prime the case according to the instructions supplied with your press. For maximum accuracy, speed and convenience, we suggest the use of a Lee Auto-Prime. With this tool, you never touch the primers from box to shell. Built-in primer flipper turns them right side up. Primers are automatically fed and installed just as fast as you can place the shell in the holder.

4 CHARGE THE CASE

Select a load from the chart on the reverse side. This is the most critical decision you must make. An overcharge can blow up the gun and injure the shooter or persons nearby. It is dangerous to use a bullet of a greater weight with a charge for a lighter bullet.

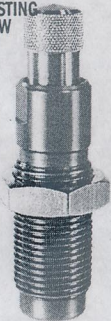
Never select a load intended for a bullet lighter than you are using. Loads for a slightly heavier bullet are safe. The LEE DIPPER is the safest and easiest powder measure to use. Adjustable powder measures should be double checked with a scale. Use the starting loads. You may work up to the **NEVER EXCEED LOADS** gradually, provided you know how to watch for pressure signs.

CAUTION: After charging the case, the only operation that should be done is to seat the bullet. **Never try to seat a primer after powder has been added.**



5 BULLET SEATING DIE

ADJUSTING SCREW



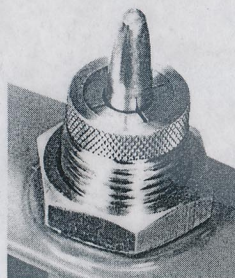
Screw the bullet seating die in until you feel it touch the case mouth. If no crimp is desired, back the die out 1/2 turn. If a crimp is desired, turn the die in 1/4 turn. The bullet must have a crimping groove or it cannot be crimped. Case must be trimmed to same length to provide a uniform crimp.

Bullet depth is adjusted by screwing the adjusting screw in or out to suit. Bullets should be seated deep enough to work through the gun's action. See **MAXIMUM OVERALL LENGTH** on reverse side.

CAUTION: Seating bullets excessively deep will reduce the case capacity and increase the pressure.

6 FACTORY CRIMP™ DIE

(NOT INCLUDED WITH LIMITED PRODUCTION DIES)



FACTORY CRIMP IS A TRADEMARK OF LEE PRECISION, INC.

Screw the Lee Factory Crimp Die in to touch the shell holder, plus 1/2 turn more. Adjust in for a heavier crimp. It is usually best to start with too little crimp, as you can readjust and crimp again to suit your needs. When the four splits in the collet are closed, maximum crimp has been achieved. Do not try for more as the die will be damaged and the crimp excessive.

Bullets do not need a crimp groove as the LEE FACTORY CRIMP DIE will form one while crimping. However, it requires a harder push on the press lever to form the crimp.

Speer advises that Speer Bullets not be used with certain Lee Dies. All other brands work great!

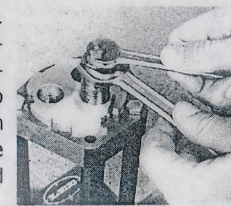
2



FULL LENGTH SIZER

Screw the full length sizer in until it touches the shell holder. Then lower the ram and screw the die in 1/4 to 1/3 turn more. Raise the ram and tighten the lock ring finger tight.

The decapper is retained by a collet. Should it be overstressed by an obstruction; it simply slides up without damage. To reset, loosen the decapper clamp and position the decapper flush with clamp end and retighten. **Considerable torque may be necessary.** A 1/2" and 3/4" wrench are necessary.



STUCK CASE If a case is not lubricated, the rim will be pulled off and the case remains stuck in the die. If this happens — loosen, but do not remove — the decapper clamp. Use a drift punch and large hammer (1-lb. or larger) to tap lightly on the decapper rod and drive the stuck case free. Lee Precision will remove a stuck case for \$4.00.

LEE SAFETY POWDER SCALE 90681

It is the easiest to use, most accurate and sensitive powder scale. The exclusive safety beam has a stainless steel razor edge for maximum sensitivity. You can be sure that the Lee Safety Scale will retain its original factory accuracy for as long as it is not physically broken.

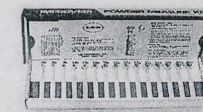


PERFECT POWDER MEASURE 90058



Versatile powder measure works well with charges as small as 2 grains, to charges over 100 grains. Soft elastomer wiper allows smooth operation even with extruded rifle powders.

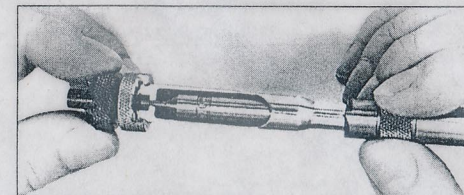
POWDER MEASURE KIT 90100



15 powder measures with slide card showing capacity of each dipper with all current powders. Over 1,300 charges are listed. Use load data supplied free from powder manufacturers and follow instructions included with Powder Measure Kit.

CHECK YOUR CASES

After a few loadings, cases tend to get longer. This could be dangerous if the case were so long that it would pinch the bullet in the end of the chamber. Pressure high enough to damage the gun could result. The simplest way to check the case and trim to the correct safe length is with the LEE CASE TRIMMER.



Notice how the case length gauge passes through the case and stops against the lock stud and trims every case to the correct length. After trimming, chamfer the inside and outside of the case mouth with the LEE CHAMFER TOOL.