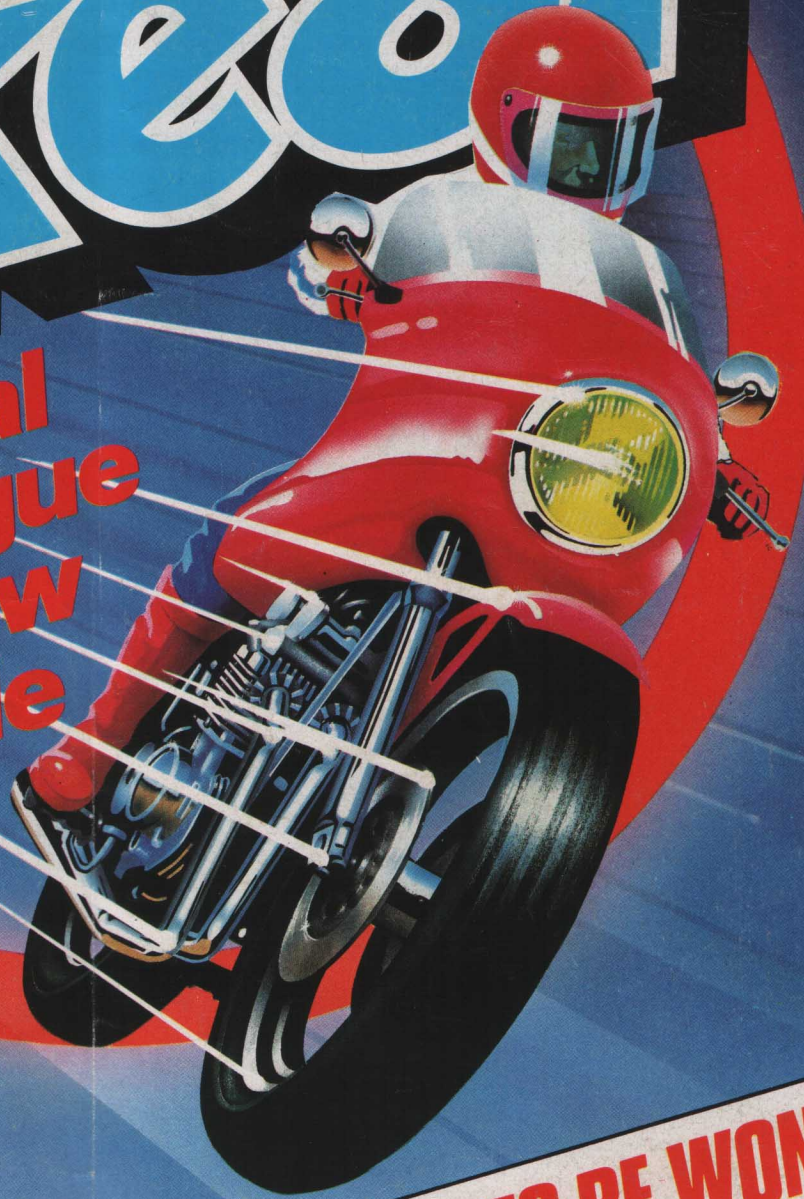


# BIKE '81

Official  
Catalogue  
& Show  
Guide



BUY YOUR BIKE  
AT BIKE '81

£1000 OF PRIZES TO BE WON

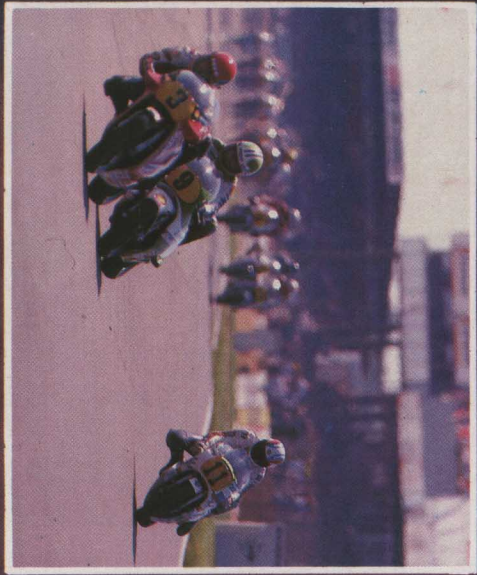
SONIC INTERCOM HELMETS

EAGLE CYCLECLOTHING

Stadium ACHILLES HELMETS

bikit RADIOS

DAILY DRAW entry details inside



# BIKE '81 - The Earls Court Motorcycle Show 21st - 31st August 1981.



Organised by Philbeach Events Ltd. in association with Motor Cycle News  
Official Show Guide

## CONTENTS

Alphabetical List of Exhibitors & Floor Plan	4 - 5
New Bikes at Bike '81	6 - 12
Exhibitor Stand Guide	13 - 33
V-twin Revival	34 - 39
The Total Helmet System	40 - 41
Free Entry Competition	41
Buying Your Bike	43 - 45
Sidecars Are Back!	46 - 47

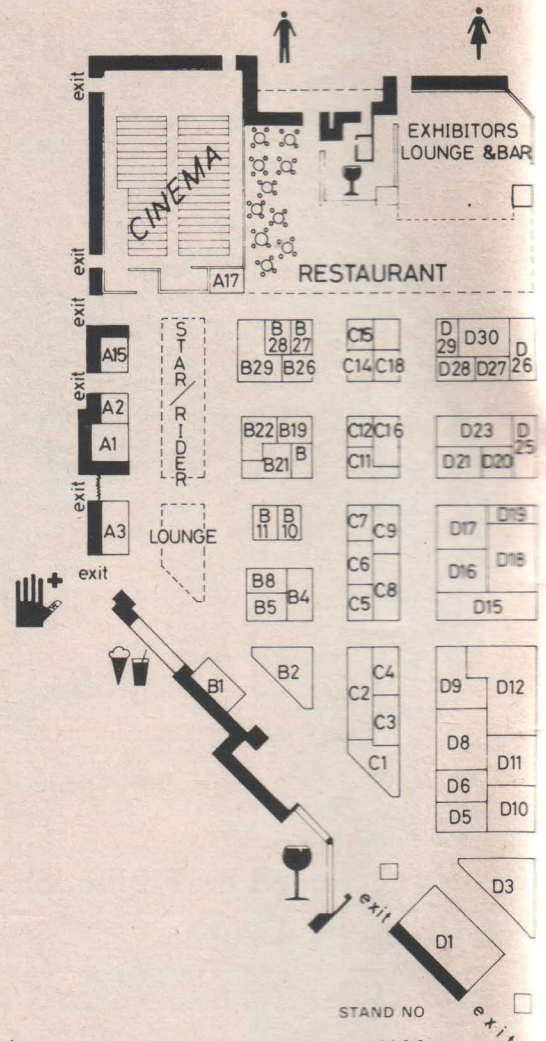
### COPYRIGHT:

All material in this publication is copyright and may not be reproduced in whole or in part without the express written permission of Philbeach Events Ltd. Every care has been taken to ensure the accuracy of the material in this publication but neither Philbeach Events, nor their agents can accept any responsibility for any inaccurate or false statement or information herein, nor do they necessarily agree with any statement made or views expressed.

Compiled and edited for Philbeach Events Ltd. by Creasy Walker Communications, produced by Michael Reynolds Ltd. and printed by Pan Litho Ltd.  
Philbeach Events Ltd, Earls Court Exhibition Centre, London SE5 9TA. Telephone: 01-385 1200.

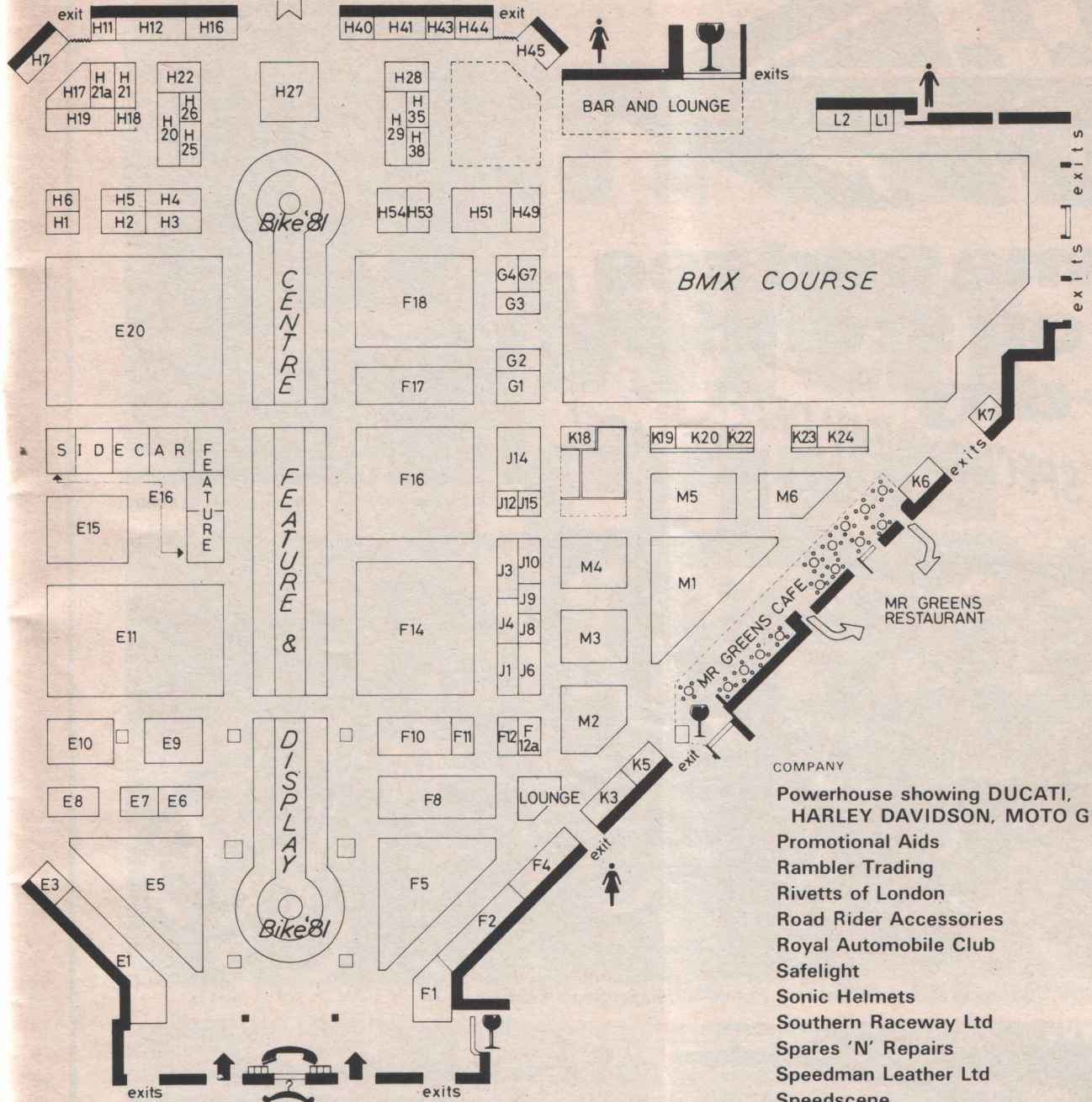
# ALPHABETICAL LIST OF EXHIBITORS STAND GUIDE

COMPANY	STAND NO.
Abasport	H40
Abbey Garage showing TRIUMPH	F5
Ace	K23
Albrow Products	C18
Alpine Sports	K19
Ammaco	L2
Arney & Taylor Ltd	D25
Automobile Association	D23
Bakehouse Products (Darlexaknit)	B22
Big Bike	C6
Bike-a-Light	B27
Bike Gear	B17
Bike Magazine	H27
The Biker	F12a
Bike Touring Ltd.	J4
Blue Max	K7
H & L Briggs	E16
Bradbury Barnes BMX	G7
Brands Hatch Racing	C5
Jeff Brett	B29
John Brown Wheels (Leather)	H35
John Brown Wheels	H29
Capital Radio	D3/D1
CDS Accessories	H12
Charlie Browns Cash & Carry	H51
Chas Mortimer Racing School	H6
Chater & Scott	C9
Christies Ltd	M1
Classic Bike	M1
Colchester Motorcycles showing HESKETH	F8
Comerfords showing SUZUKI	F14
Cornish Foods	A2
Crossbow Equipe	H54
Custom Lids	K5
Codnor Light Fabrications	D26
D & G Leatherwear	E3
Dial-a-Style	J15
Diwan Enterprises	J10
Dixon Racing Ltd	D9
Peter Dobbs Leather Goods	H21
Dresda Autos	D11
Easy Rider Motorcycle Clothing	D28
Eden Leathers	H38
Elfor Leather	B26
Freewheeler Leisure Products	K24
Gemini Sidecars	E16
Glo-Marka	C3
Goodridge UK	H23
G P Motorcycle Accessories	D8
Grand Prix Promotions	C4
Wilf Green Ltd showing MZ	F10
Grid Gear Bike Clothing	C1
Hadleigh Custom	H4
Halewood Equipment	H19
Hanalean	E16
Harris Clothing	B1
Harris Performance Products	H3
Shane Hearty	B5



COMPANY	STAND NO.
Hellas Enterprises	H44
Hideout Leather	D19
House of Broomfield	C15
House of Wheels	D12
HRS Motorcycles	J3
Interstate Leathers	D15
Intervisual Advertising	Foyer
J & D Catering	A17
J & M Accessories	H11
Kay Equipment	D21
Kede Manufacturing	F4
Ken Kay showing KAWASAKI	F16
Jock Kerr Motorcycles	E7
LDC	F2
J Lang & Co	J9
Lawson Engineering	E16
Lichfield Bike Tyre Centre	H53
Linvar Ltd	D30
Local Farm Dairies Ltd	K6
Loud Products	C11
Madison Cycles	B10
Maitland Racing	H16
Master Distributors	A3
Mead Speed	J1
Medway Mail Order Co Ltd	B8
Mel Lemoto Ltd	H2
Mocheck showing HONDA	E20
Morphy Motorcycles showing BATAVUS, BETA, ITALJET, LAVERDA & MOTO MORINI	F17
Motique	H41

TEST-RIDE-A-MOPED  
CENTRE



WARWICK ROAD ENTRANCE

COMPANY

- Motogear
- Moto Martin (UK) Ltd
- Motorcycle City showing YAMAHA
- Motor Cycle News
- Motorcycle Parts Supply
- MotorCycle Weekly
- Motorcycle World Mail Order
- M & P Accessories
- M & T Moss Ltd
- Neval M/C Imports Ltd
- Olympic Products & Accessories
- Ongar M/C showing BMW
- Charles Owen & Co
- Pantera
- Pedler Cycles Ltd
- Pepper Performance Products
- Perma Ltd
- Piper FM Ltd
- PJ1 Oils

STAND NO

- H1/K18
- H22
- E11
- E1
- B4
- F1
- E15
- C8
- D6
- E10
- B18
- E5
- D27
- D16
- G1
- H45
- D17
- E6
- G4

COMPANY

- Powerhouse showing DUCATI, HARLEY DAVIDSON, MOTO GUZZI
- Promotional Aids
- Rambler Trading
- Rivetts of London
- Road Rider Accessories
- Royal Automobile Club
- Safelight
- Sonic Helmets
- Southern Raceway Ltd
- Spares 'N' Repairs
- Speedman Leather Ltd
- Speedscene
- Speedscene Ltd
- Squire Sidecars
- Gerald Stains Ltd
- Star Ranger Products
- Star Rider
- Supamerica Custom Warehouse
- Takodo
- Talon Products
- Tristar Motorcycles
- Trim Suprotect
- TT Supporters Club
- UKBMX Association
- Verkerke
- Vetter Products
- Vienna Grill
- Vincelight Ltd
- Wheelies & Co
- Wilderman Ltd
- Wiseco Piston (of Europe)
- Keith Wash Unit Sidecars
- Watsonian

STAND NO

- F18
- D20
- D29
- D10
- D5
- E8
- C16
- J6
- C2/H20
- H25
- D18
- H17/H7
- H28
- E16
- H21a
- B11
- A16
- H5
- A15
- B28
- J14
- B2
- F11
- L1
- J12
- H26
- H43/A1
- B19
- E9
- C14
- C7
- E16
- E16



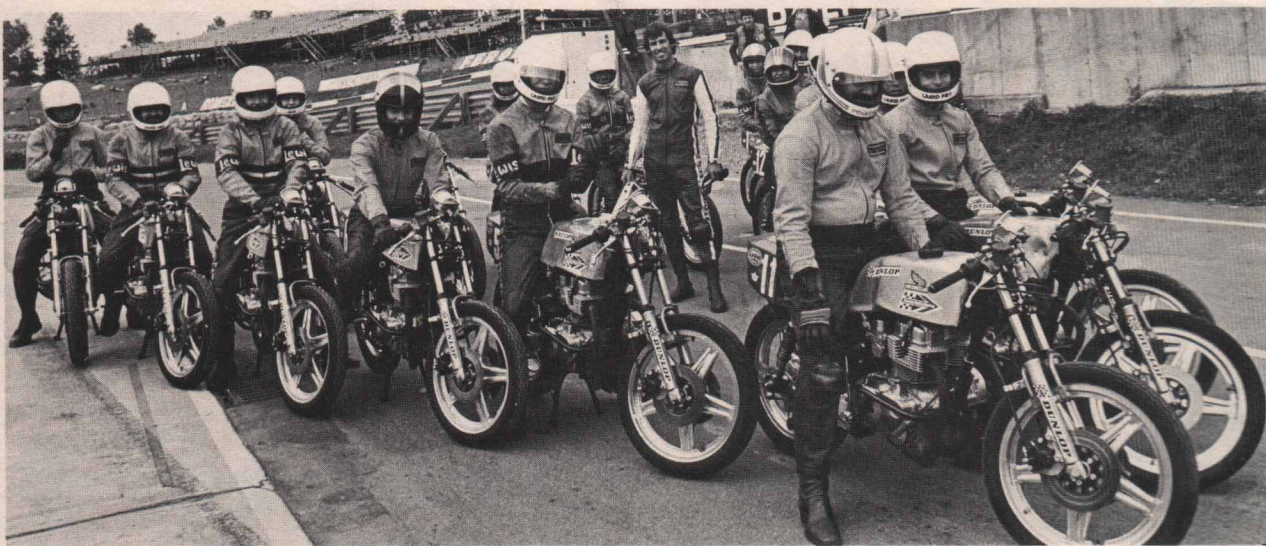
**Brands Hatch Racing**

**Come and see  
us on stand C5  
to-day**

**SPECIAL SHOW OFFER  
OF 5 FREE LAPS!**



Senior Instructor Jeff Crookbain, advising a pupil.



Ready for their first lesson at Brands Hatch on Honda 400 Super Sport Twins.



Following Jeff on the first lap down Bottom Bend at Brands Hatch.



Zip Shadow Honda 125cc Superkart at Brands Hatch.

CUT OFF AND SEND

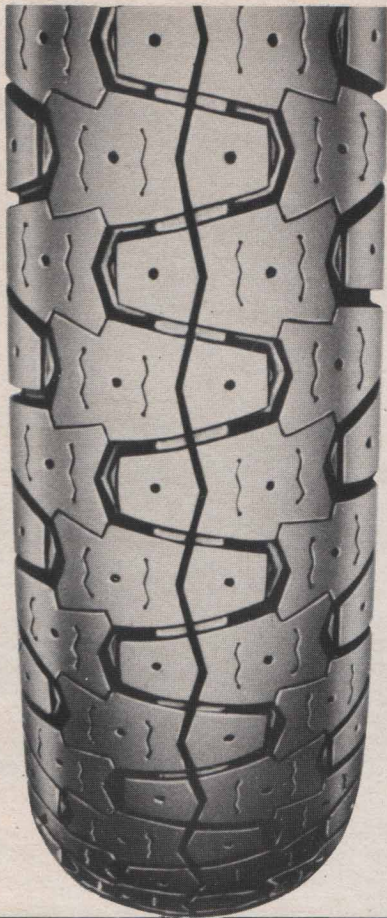
Please send me full details of Car/Motorcycle/Superkart school (encircle brochure required)

(Earls Court '81)

Name \_\_\_\_\_

Address \_\_\_\_\_

To:- Brands Hatch Racing  
Fawkham, Nr Dartford,  
Kent DA3 8NG.



# Tread with care

---

## **Pirelli Phantom. The world's finest motorcycle tyre.**

Why? Because it was designed and developed by motorcycling enthusiasts. On the roads of Italy and racing circuits of Europe.

The Phantom is made from the highest quality materials and fits every superbike available. To make them steer and handle that bit better.

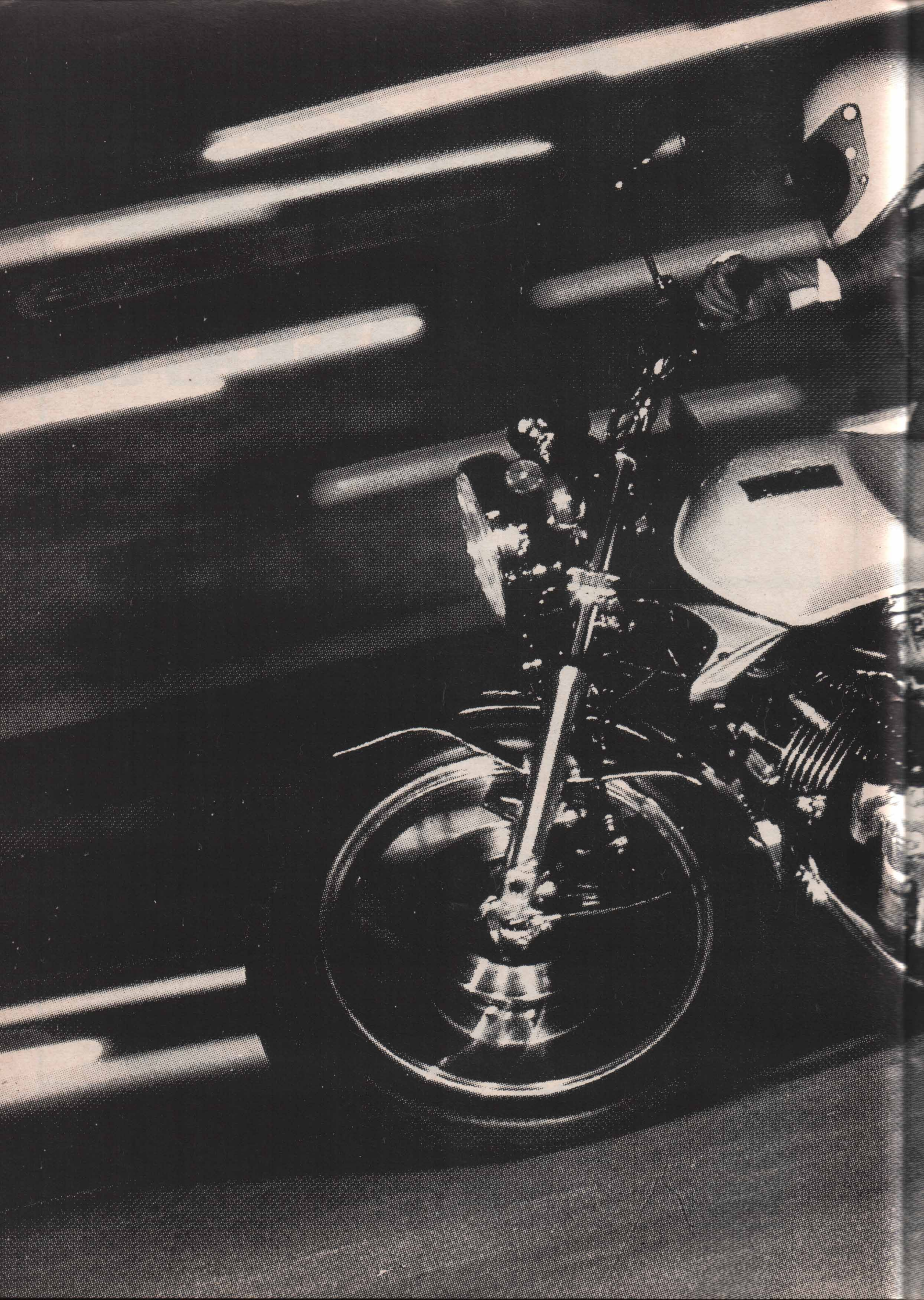
Phantoms win races. On similar bikes to those on the road. Fit Phantom and revel in the difference it makes.

Pirelli Phantoms are V-rated for sustained high speed. The same care goes into the making of the H-rated Gordon and S-rated Mandrake.

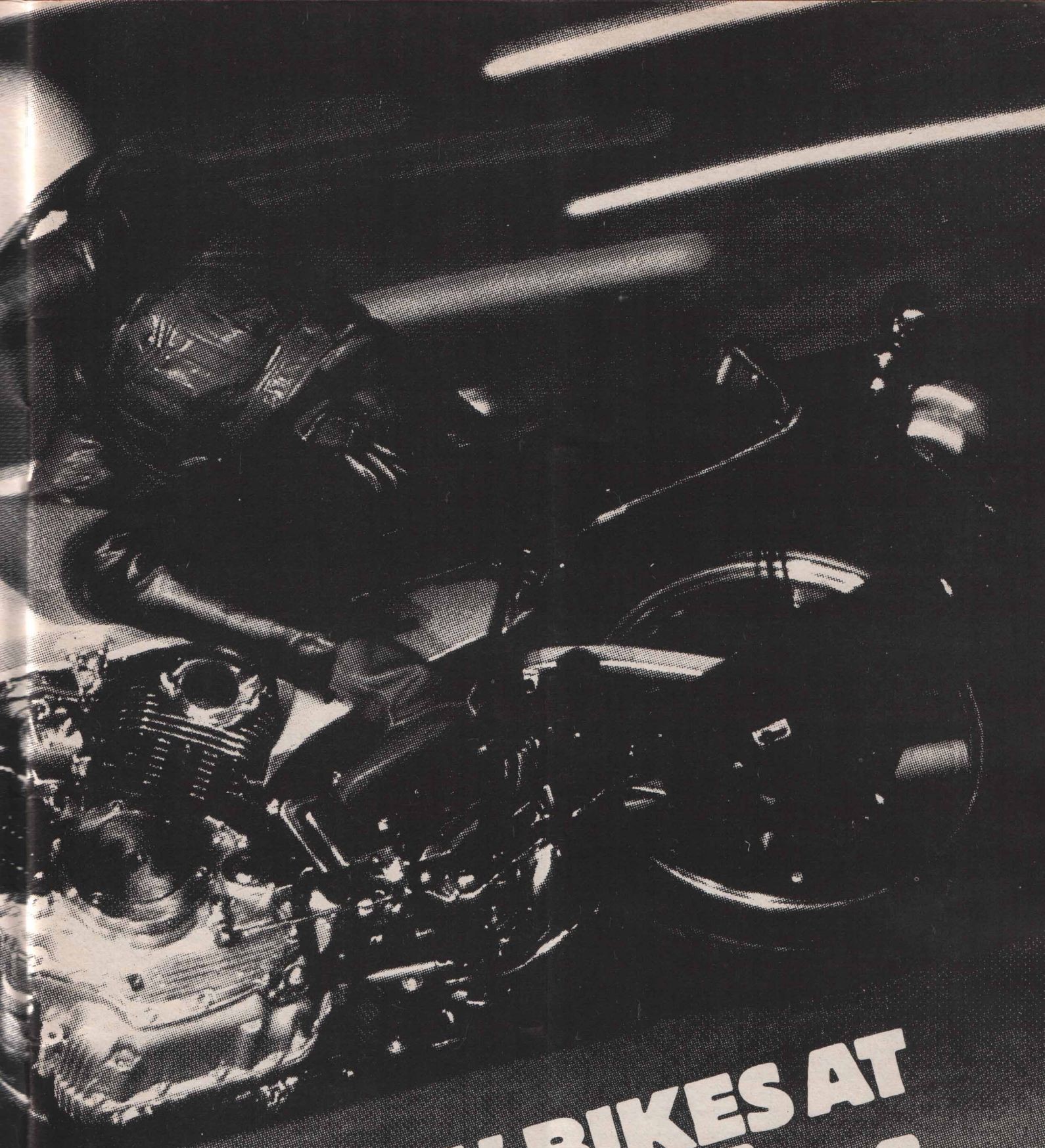
Pirelli. Tread with care.

# **PIRELLI**

## **Puts The Power Down**







**NEW BIKES AT  
BIKE '81**

Bike '81 is the first show for the MZ ETZ250, the Ducati Pantah 600, the Moto Guzzi Le Mans Mk111, the Triumph TR6T Trail, and the first production Heskeths.

Most interesting of these, from the point of view of all interested in the re-birth of a British motorcycle industry is the Hesketh.

#### **Hesketh:**

Traditionally British in character, in the mould of the Brough Superior and the Vincent, the Hesketh differs so much from earlier designs that it should be regarded as the first really new machine to be built in this country for some years.

It's a 992cc v-twin laid out with the cylinders angled at 90° - Ducati-fashion. The head design is similar to the Cosworth Formula One car engine, with four valves and double overhead camshafts, which pumps out a fairly modest (for a 1000) 86bhp at 6,500rpm, with a maximum torque of 69lb-ft at a lowish 5,000rpm.

This means that the power characteristics of the Hesketh are quite unlike the Italian v-twin or the Japanese fours. These engines rev higher and develop their maximum torque further up the range.

The Hesketh probably won't have the acceleration and top speed of say, a Suzuki GS1000, but it will be fast in the old fashioned highly geared lazy British v-twin style.

The first six production machines, which are on display at Bike '81, differ very little from the first production prototypes shown at the 1980 Earls Court Motorcycle Show... the only



*Disc braked MZ ETZ250 launched at Bike '81.*

visible differences are in the re-designed transfers on the rear and tank of the bike.

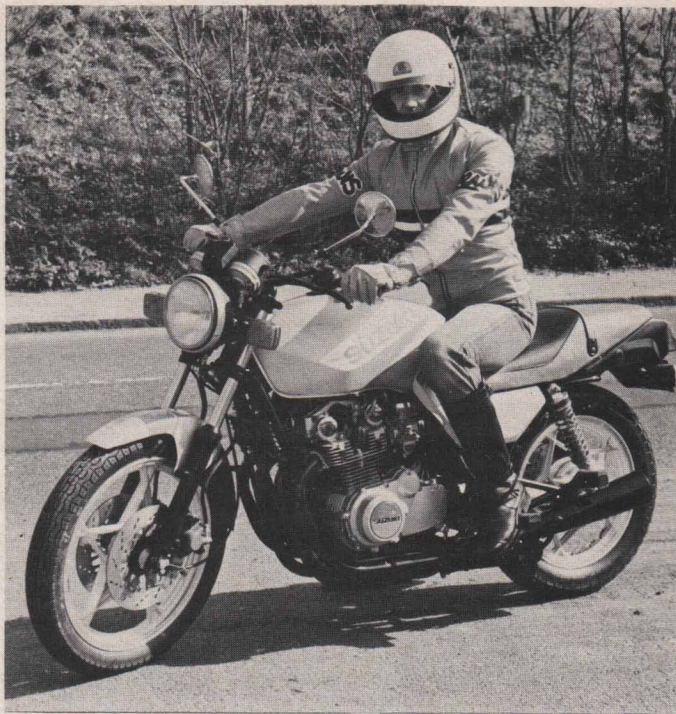
But like the prototypes, the production models are made from first class components - Reynolds 531 tubing for the frame, Astralite alloy wheels, Marzocchi forks, Brembo disc brakes, Lucas ignition and electrics - although the headlamp is a Bosch - all packaged in an attractive motorcycle which weighs about 500 pounds.

Lord Hesketh and his small team have turned an idea into reality and in doing so have confounded all their critics - from within and outside of the industry. The six machines on the Colchester Motorcycles stand are worth looking at and they are on sale for delivery at the close of the Show.

Perhaps of more interest to most riders are the new Moto Guzzi and Ducati v-twins - if only because they cost less than the Hesketh.

#### **Ducati:**

Superficially the Ducati 600 Pantah seems to have a lot in common with the Hesketh... it too is a v-twin, but the engine is



*Katana Suzuki 650.*

a 583cc unit with a single over head camshaft operating desmodromic valves. Engine output is 60.16bhp at 8,500 with maximum torque at 7,500rpm.

Physically the Pantah is a lot smaller and it weighs about 80 pounds less than the Hesketh. It is developed from the successful 500cc Pantah which has been on sale for a year or so.

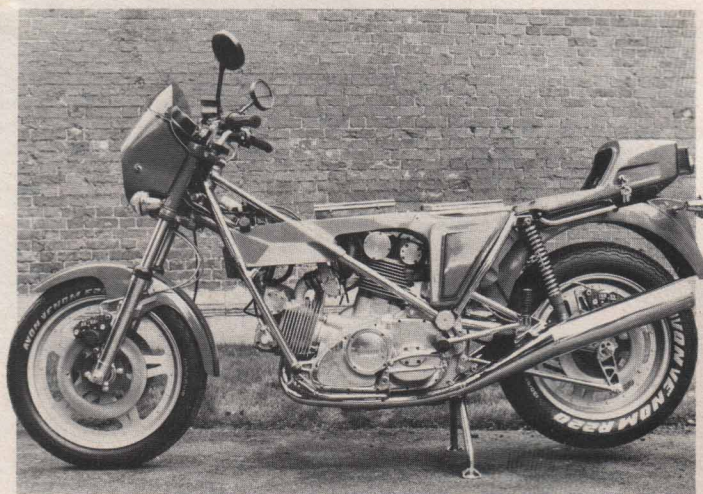
Compared to the 500cc version the 600 develops 15 more horsepower and weighs 9kg (20 pounds) less, so that performance should be significantly better, although Ducati only claim a 5mph increase in maximum speed at 125mph.

#### **Moto Guzzi:**

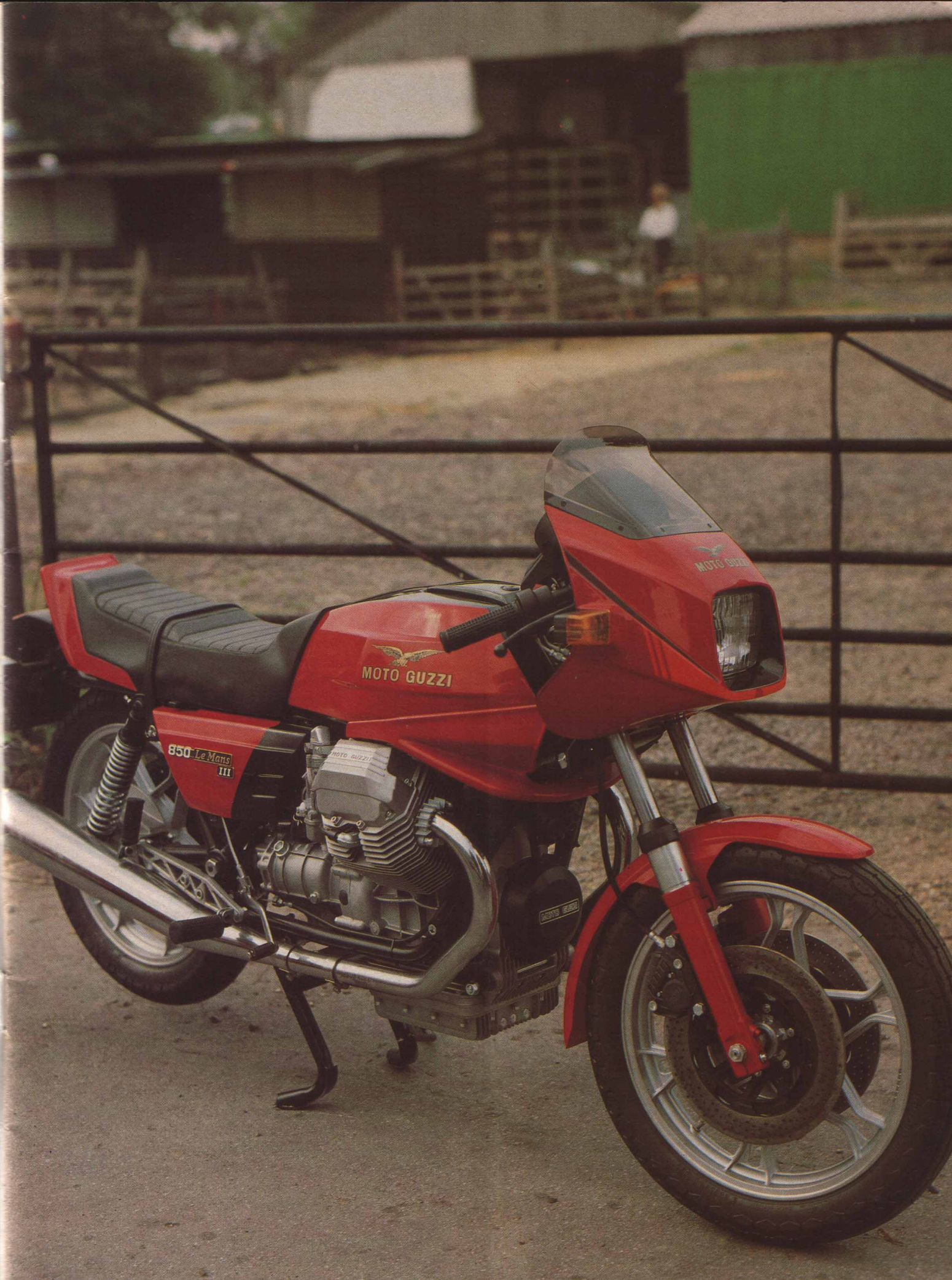
While the Moto Guzzi Le Mans Mk111 is a v-twin it bears little resemblance to either the Hesketh or the Ducati as the engine is laid out in a transverse configuration - the cylinders are across the frame, like a bent BMW.

The Le Mans Mk111 is a development of the earlier Mk11. The fairing is the most obvious change. It is reduced in size to improve looks, reduce drag and improve top speed, while it is claimed to afford as much weather protection as the older one.

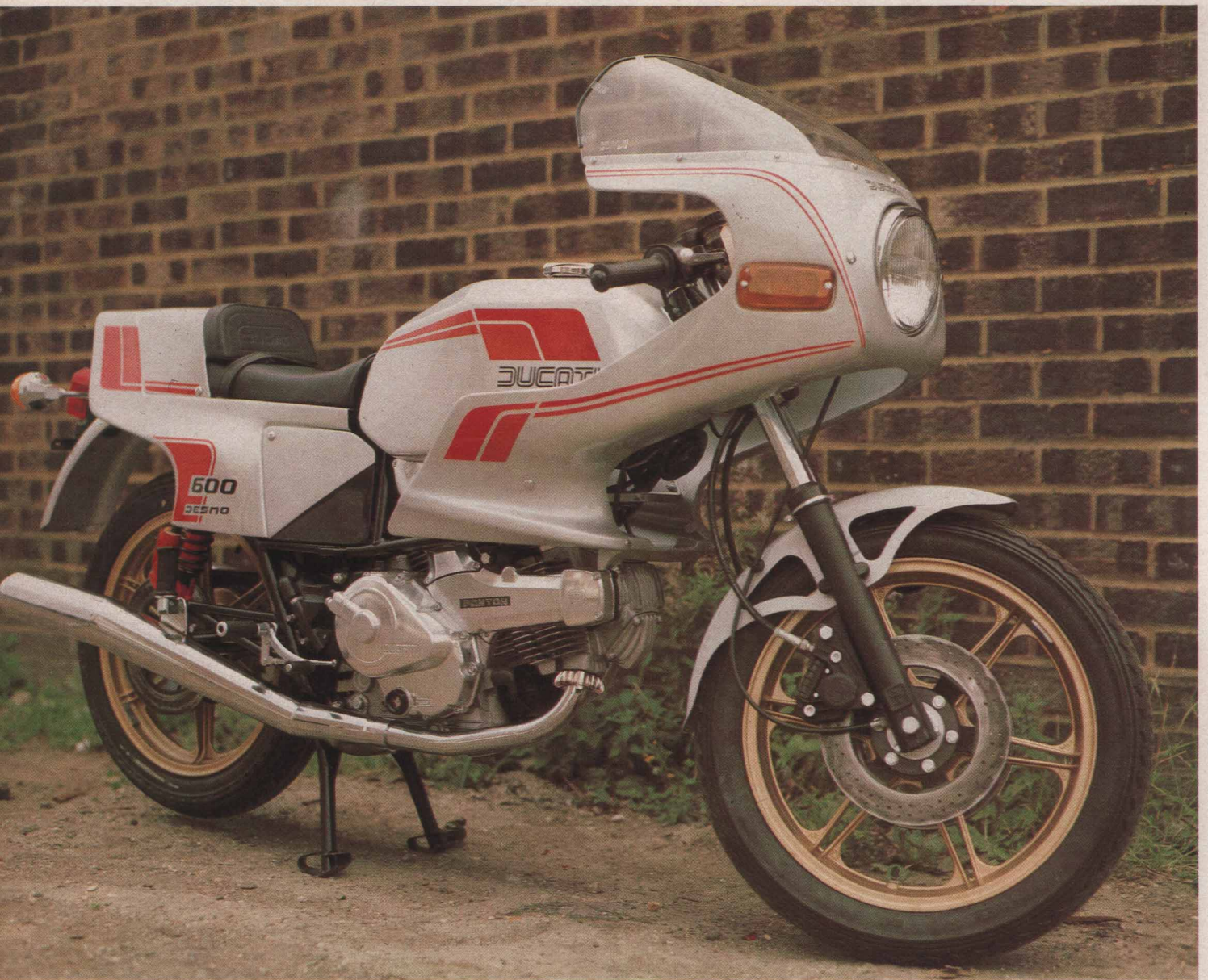
Changes in the engine have given an extra 6hp, and this in turn has given another 5mph at the top end (top speed is now a



*Hesketh v-twin without tank and seat shows frame construction and overall quality.*



Moto Guzzi Le Mans Mk111.



*Ducati 600SL Pantah.*

claimed 135 miles per hour) and a minimal decrease in fuel consumption.

The air assisted oil suspension is now linked to enable easy setting of the suspension units, and a longer swinging arm is fitted to improve rear suspension control. The wheel-base has been lengthened for improved high speed stability.

**Triumph:**

Based on an engine design which dates, in a direct line, to 1936, the Triumph TR6 Trail is a 650cc engine version of the successful TR7 Trail introduced last year at Earls Court.

Virtually identical to the 750 version, the TR6 should be even better as a dual purpose mount for road and off-road riding as the softer single carburettor 650 engine is more suited to low and medium speed running, while losing out very little in outright performance, and having better fuel economy.

While it can't be regarded as a true off-road bike it is, like the TR7 and the BMW R80G/S, especially suited to high speed running on dirt roads and should prove popular on the export market.

**MZ:**

In a totally different vein to the previous four bikes, the MZ ETZ250 is a new sports commuter bike from the famous East German factory - whose bikes have gained such a reputation for value-for-money and reliability.

MZ's policy of gradual development, coupled with rugged simplicity, and competitive price, have endeared them to many British motorcyclists.

The new MZ ETZ250 continues this tradition, being a development of existing models rather than a radical new design.

The 250 single cylinder oversquare 243cc two-stroke MZ engine has a deserved reputation for reliability and economy, and in this version is fitted with wide finning to improve cooling of the 21 horsepower engine.

Engine and 5 speed gearbox unit are elastically mounted to minimise the engine vibrations, being transferred to the new rectangular section spine-type frame.

Front suspension is by telescopic forks with 185mm travel and the swing arm rear suspension is fitted with adjustable springing with 100mm of movement.

The roadholding of the MZ 250 has always been in excess of its performance but with the ETZ the designers have fitted a 260mm hydraulic disc front brake to match modern traffic conditions - although a 160mm drum brake is available as an option.

New electrical equipment is fitted - a 12 volt battery; 14 volt 15 amp 3 phase dynamo and a 40/45 170mm headlamp give good lighting and spare capacity for the fitting of special electrical equipment.

MZ have retained their trouble and maintenance free fully enclosed rear chair making it ideal for the commuter who must ride in all weather.

Commuting is aided by the claimed 75/80 miles per gallon fuel consumption. Top speed is (claimed) 80 miles per hour with a 0-50mph acceleration time of 6.6 seconds.

Dry weight is 14.15kg (317 pounds) with a petrol tank capacity of 17 litres (3.75 gallons approximately) of petrol/oil mix at 50:1.

Styling of the new machine is up-to-date and will help allay comments about the old-fashioned looks of previous MZs. The ETZ 250 is fitted with direction indicators, speedometer and matching tachometer which add to its appeal as a value-for-money commuter.

In addition to these bikes, which are being seen at a show for the first time, the past few months has also seen the release of other interesting machines - the dramatically styled Suzuki Katanas; the fastest production bike - the Kawasaki GP1100; and a special version of the BMW R100.

#### **Suzuki:**

Suzuki's dramatic Katanas were the first Japanese motorcycles to break away from the traditional look and attempt to bring motorcycle styling up to date.

As with most innovations in the industry opinion has

polarised into those who love and those who hate them - but one thing is for sure - they are difficult to ignore.

Available in 550, 650 or 1100cc forms - the largest has a distinctive nose fairing - the Katanas have similar performance to their more conventionally styled GT counterparts.

All three are four cylinder double overhead camshaft engined bikes with a five speed gearbox mounted in a duplex cradle frame, with telescopic front forks, swing arm rear with adjustable damping.

Power output of the 550 is 53.7bhp @ 9,400rpm; the 650 develops 73bhp @ 9,500rpm; the 1100s engine produces 100+bhp. Potent performers as well as being distinctive looking.

#### **Kawasaki:**

A recent motorcycle magazine road test described the Kawasaki 1100GP the fastest production motorcycle currently available. With 108bhp @ 8,500rpm coupled with a weight of just over 500 pounds the GP1100 has the best power to weight ratio in its class... allowing it to out accelerate any other volume production motorcycle, and giving it a top end performance approached by few others.

The Kawasaki Z series engines have an enviable reputation for performance and reliability approached by few others and the GP1100 is a logical extension of their previous engines. It



*Kawasaki GP1100Z - one of the fastest production bikes.*



*BMW R100 fitted with R100RS fairing and special paintwork.*

is fitted with an electronic fuel injection system for fuel delivery (originally introduced on the Z1000H); an oil cooler to maintain consistent engine temperatures, an air suspension at the front; triple disc brakes to match the bike's speed - all specifications for a hot sports machine, but the GP1100 is a tractable machine ideally suited for all round riding.

**BMW:**

While it is not a new machine the BMW R100 on the Ongar Motorcycles stand indicates the continuation of a trend. Earlier BMW released a specially painted version of the R100 which sold alongside the standard model. This new machine carries that a stage further - the paintwork is special, but the bike is also fitted with the fairing and panniers from the top of the range model - the R100RS - to give a machine which is



*BMW R100.*



*Ducati 600SL Pantah instruments.*

visually as striking as the top bike but at considerably less money.

Its performance may not be as good, but for everyday use few riders - especially touring-oriented riders - will notice and the significantly better fuel consumption is an added bonus. This machine is a striking example of a major dealer tailoring his merchandise to every sector of his market.

The black, red, orange and gold paint job may not be to everybody's taste but it does give a stunning visual effect to a machine often labelled "conservative".

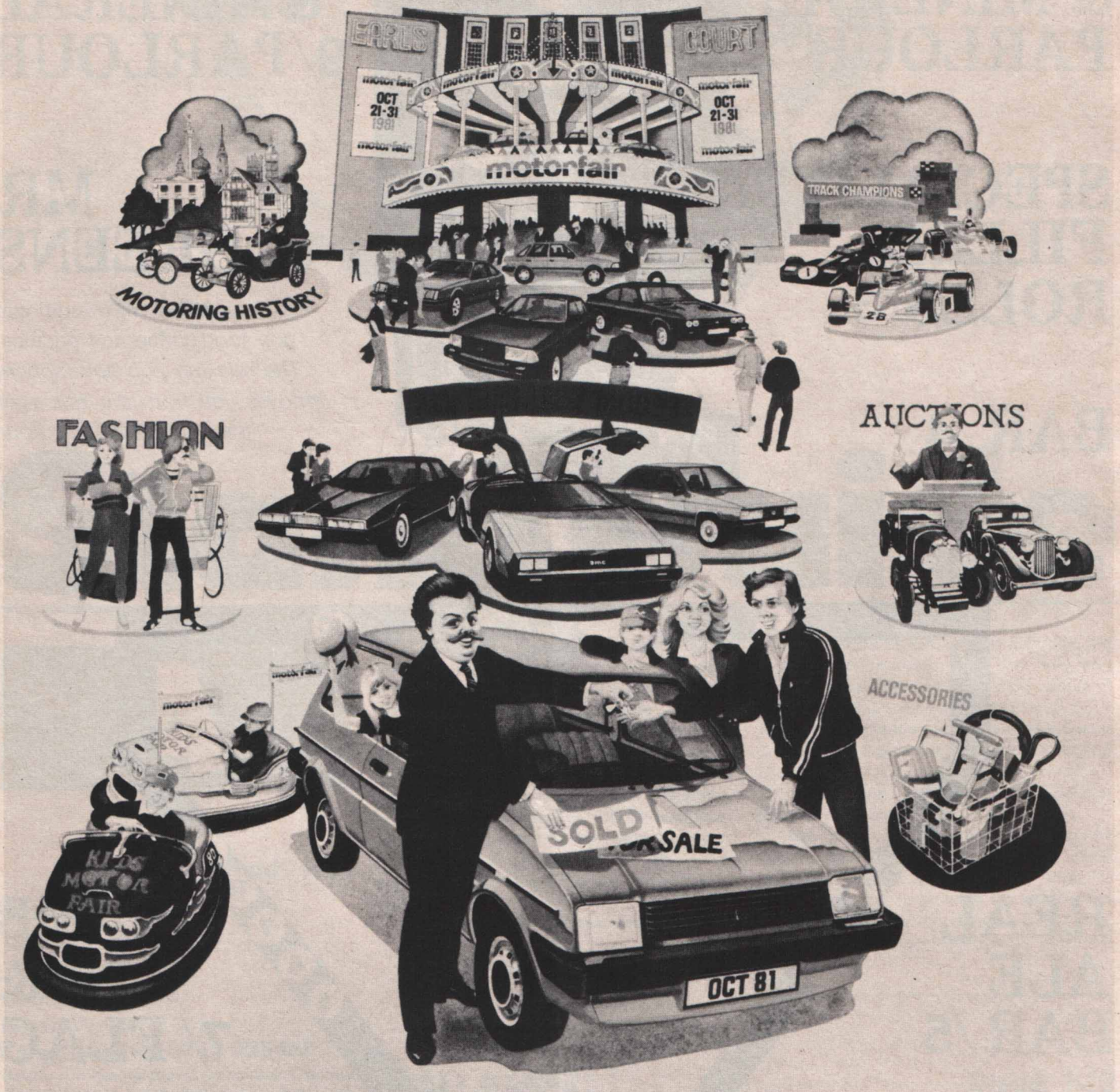
These machines may be the stars of the Show, but there are many other machines on display running the full capacity range from 50 to 1300cc - whatever your needs or desires one of the motorcycles at Bike '81 should match up.



*Moto Guzzi Le Mans Mk111 instruments.*

# motorfair

LONDON'S MOTORING SPECTACULAR FOR ALL THE FAMILY!



**EARLS COURT · OCTOBER 21-31 1981**

DAILY 10AM - 8PM (CLOSES AT 6PM ON OCTOBER 25 & 31)

ADMISSION £2.00 (£5.00 OPENING DAY)

**FAST FOOD  
LOUNGE/1**

**ICE CREAM/  
SHAKES  
& MINERAL  
PARLOUR/2**

**SPECIALITY  
FILLED  
ROLLS/3**

**BAR/4**

**REAL  
ALE  
BAR/5**

**FAST FOOD  
BAR/6**

**Come  
and  
enjoy  
a  
meal  
at**

**FAST FOOD  
10/ LOUNGE**

**ICE CREAM/  
SHAKES  
& MINERAL  
9/PARLOUR**

**MR  
8/ GREENS**

Lounge Bar with traditional  
pub food coffee and pastries.  
*'The relaxing pub atmosphere  
removes you from the bustle of  
the busy exhibition floor.'*



**LAMB  
&  
7/ FLAG**

You'll be delighted with the range  
of appetisers, salads, entrees and  
beverages on offer on this stylish  
new Restaurant.

*'An exciting new concept for the 80's  
in the heart of Earls Court.'*





# Stand Guide

**A**

**Stand: H40**

## **ABASPORT**

**Retail Shop  
14 Water Street,  
Abergele, Clwyd,  
North Wales.**

**Telephone No: 0745 825488**

Before purchasing your goodies check out our discount prices. We know you won't be disappointed. Griffon helmets at unbelievably low prices - less than trade price. New Armstrong shocks with chrome springs for less than £40. Davida vacuum gauges, Centron expansion pipes, S & W and Marzocchi shocks, wax cotton and Moto Mod suits all at less than trade price.

We will, of course, have our full range of mail order lines at special Show prices - including full face visors for less than £1 each, while stocks last. For LC owners we have developed a made to measure steering damper kit and radiator grill to sort out your handling.

If you are thinking of adding a clock or extra instruments to your machine now is the time to check out our amazing VDO Show prices. We could go on and on but instead suggest that you check out prices then call on our stand and let us quote. We are approachable and negotiable.

"Abasport where the best costs less."

full range of the current models including the 2-seater version of the 'Tiger 750 Trail', and also will be launching our new 650 version of the 'Tiger Trail'. Also on exhibit will be a Triumph combination, fitted with the Squire Sidecar and Sigma's latest range of touring equipment.

The Triumph Owners Club can also be found on this stand.

Also on this stand the opportunity to win two Triumph 750cc Bonneville bikes which were used by the Neighbourhood Trust for Cancer Research to promote the work of the trust around the country during a 2,000 mile, 100 town promotional ride held in July, this year.

**Stand: F5**

**ABBEY GARAGE,  
24 Pield Heath Road,  
Hillingdon,  
Uxbridge, Middlesex.**

**Telephone No: 89 32827**

Abbey Garage in conjunction with Triumph motor cycles Meriden Ltd. will be showing a

**Stand: K23**

**ACE,  
444 Forest Road,  
Walthamstow,  
London E.17.**

**Telephone No: 01-520 1126**

**Stand: C18**  
**ALBROW PRODUCTS**  
**LIMITED,**  
**P.O.Box No.3,**  
**Twyford, Reading RG10 8AZ.**  
**Telephone No: 073 522 3731**

Albrow Products are showing a new range of visors made from press-polished WORBLEX CP which has been designed to increase safety on both the road and track. The comprehensive range of visors is competitively priced and is designed to suit almost every type of helmet. Visor thicknesses vary from 1mm for normal usage to 1.5mm for high speed and track work.

Visors on display include the UNIVERSAL which can convert almost any helmet to 'one-handed' operation and an anti-scratch coated WORBLEX Poly-C visor which overcomes the breakdown problem associated with the brittle coatings used on many visors today.

**Stand: K19**  
**ALPINE SPORTS,**  
**215 Kensington High Street,**  
**London W8.**  
**Telephone No: 01-938 1911**  
**Telex: 8813136**

On the Alpine Sports stand you'll find displays of some of the latest and best BMX equipment. Not just the ordinary bikes and components but custom bikes, cruisers, and some of those extra special parts which have made Alpine number one when it comes to BMX bits.

If you need advice there are experts on hand to tell you all about the items on display (and about one or two that are still in the pipeline), plus if you want to know more, they'll be able to direct you to the London BMX centre itself - just around the corner from the Show, at 215 Kensington High Street.

And whether you're into BMX or motor-bikes you'll find a sticker for you on the Alpine Sports Stand. As well as picking up a free Alpine sticker, you can buy some of the outrageous Californian bike and BMX designs specially imported for the Show.

**Stand: L1**  
**AMMACO MONGOOSE,**  
**Knockhurst,**  
**Tenterden, Kent.**  
**Telephone No: 05806 3053**

Ammaco U.K., to everyone in BMX, means MONGOOSE - the world's leading BMX bicycle manufacturers. Accepted as THE standard for design, workmanship and quality; MONGOOSE, manufactured in Chatsworth, California U.S.A., are imported by Ammaco to their headquarters in Tenterden, Kent. With a product range of some 12 different specification machines, from £90 to £350,

Ammaco cater for every facet of the would-be BMX racer's dreams. Some 300 dealers nationwide stock MONGOOSE machines.

A comprehensive range of spares, clothing and 'trick' parts is also available - enabling every new BMX'er to emulate the AMMACO/MONGOOSE 'works' riders.

MONGOOSE do not cover the 'look-like' (imitation) BMX machine market. Every MONGOOSE built in Chrome-Moly tubing, Heli-arc assembled, comes with a race-worthy guarantee of genuine BMX reliability.

In addition to their direct sales work, AMMACO MONGOOSE have been the driving force behind much of the overall promotion of BMX throughout the U.K. This has been achieved by building courses themselves, in various parts of the country, arranging for MONGOOSE works riders to appear on TV and radio, and in presenting shows, both locally and on a national level. Ammaco MONGOOSE have also been keeping the press informed of all developments and they actively support the U.K. BMX Association in their efforts to make BMX THE number one sport for youngsters of all ages.

As one of their marketing men says: "BMX is like ice cream - buy it and you want some more" - we believe him!

**Stand: D25**  
**ARNEY & TAYLOR LTD.**  
**5 Stanstead Road,**  
**Forest Hill,**  
**London S.E.23.**  
**Telephone No: 01-699 8722**

We shall be selling the official Show Lapel Badge together with full range of Protar Motomodelli 1/9 scale model kits, cloth patches, "T-Shirts", lapel badges, P.V.C. stickers and a good range of plastic model kits of current models.

**Stand: D23**  
**AUTOMOBILE**  
**ASSOCIATION,**  
**Fanum House,**  
**Basingstoke,**  
**Hants.**  
**Telephone No: 0256 20123**  
**Ext. 3031**  
**Telex: 858538**

You don't have to drive a car to enjoy the full benefits of AA membership. We offer exactly the same service to the motorcyclist as we do to the motorist.

With over 3,000 radio-controlled breakdown vehicles on the road 24 hours a day, and more than thirty operational centres, there is always someone, somewhere, ready to help you in the event of a breakdown. If your motorcycle is beyond roadside repair or it has

been badly damaged in an accident, AA Relay Service will take you and your bike, together with passenger and luggage to any destination on the UK mainland.

Assistance doesn't stop at the roadside. Other services available include free legal aid, technical advice, competitive insurance quotations, attractive holiday offers, a route planning service and foreign touring security.

The AA also offers a wide range of books, maps and touring guides and a whole host of accessories all at privilege prices.

"It pays to have the best" so come and see us on Stand D23 and we'll show you why its a great investment to become a member of the world's largest motoring organisation.



**Stand: B22**  
**BAKEHOUSE PRODUCTS,**  
**20 Park Road,**  
**Ratby, Leicester.**  
**Telephone No: Leicester 395567**

Bakehouse are showing their well known range of biker's sweaters and other exclusive designed jumpers which are manufactured in 100% easy care and machine washable acrylic. All their high quality heavy knit sweaters are English made and have the design knitted into the jumper which ensures the durability of the design and its resistance to fade.

On display is the biker's range of sweaters which includes Honda, Suzuki, Kawasaki, Yamaha, Norton, Triumph, BMW and Moto Guzzi complemented by the latest range which features various motifs such as Rolls Royce, Ford and the new Honda logo and Space Invaders.

Bakehouse provide a designer service to clubs, shops and associations etc. and the qualified staff on the Stand will be pleased to help design an individual motif for orders as small as two dozen.

**Stand: C6**  
**BIG BIKE,**  
**115 Tanners Hill,**  
**Deptford,**  
**London SE8 4QD.**  
**Telephone No: 01-692 4277**

BIG BIKE - custom and performance parts from the U.S.A. and the Continent, beautify and individualise your machine. See our customised turbo charged street bikes, and racing permitting Tom Quinn's injected, turbo charged "funny" drag bike.

**Stand: B27**

## **PANDERBROOK LTD./**

### **BIKE-A-LITE,**

Unit 4, Hoskins Place,  
Watchetts Road,  
Camberley, Surrey.

**Telephone No: 0276 66070**

Sole importers and distributors of Jogonalite products in the UK. Exciting new range of reflective/fluorescent safety gear designed specifically for motorcyclists and distributed under the name of Bike-A-Lite.

Range includes fully reflective Sam Browne belt with quick release buckle, fluorescent mesh jackets and tabards with reflective strips, self adhesive helmet tapes and shapes in reflective material, reflective leg and arm bands and other items of reflective safety gear.

Demonstrations will be given to emphasise the effectiveness of these reflective garments.

**Stand: B17**

## **BIKE GEAR,**

197 Bournemouth Road,  
Poole, Dorset.

**Telephone No: 0202 731803**

Bike Gear motorcycle accessories will have the full range of Izumi chain for virtually any bike. Chains available are: standard chain, heavy duty chain, heavy duty self lube chain and "HT" high performance chain. Bike Gear will also have a range of chain and sprocket kits for most popular models.

Also available will be Izumi chain lubricants which are manufactured in the UK to meet the rigorous demands on a chain caused by the British weather. Other accessories available will be Izumi helmets and Izumi race jackets.

**Stand: H27**

## **BIKE MAGAZINE,**

### **EMAP,**

Bushfield House,  
Orton Centre, Peterborough.

**Telephone No: 0733 237111**

Bike Magazine check out our Stand and see the latest gear, maybe buy the latest gear. Anything to sell? Looking for something to buy? See the 'Anything Goes' board. Posters, badges, T-shirts, magazines, OGR!!

Bike Magazine the Best Bike Magazine written for bike riders by bike riders.

Bike Magazine captures the excitement and freedom of motorcycling, features include: custom bikes, touring, legislation, interesting people, technology and sport. Road testing forms an important part of the magazine and pulls no punches. Imaginative photography and lots of colour. Sometimes serious, sometimes satirical, sometimes humorous, but always interesting.

**Stand: J4**

## **BIKE TOURING LTD,**

1229 Christchurch Road,  
Iford, Bournemouth,  
Dorset.

**Telephone No: 0202 825421**

Bike Touring will be exhibiting a wide range of high quality luggage, including 6 types of tank bag, 5 types of soft panniers, 4 types of saddle bags, executive side cases and carriers and 5 types of handle bar fairings. A wide range of helmets, visors, gloves all available at special Show prices.

We have special low price exclusive lines i.e. top boxes and large stuffa bags with shoulder straps.

**Stand: K7**

## **BLUE MAX,**

Longstable, Stanley Sidings,  
Chalk Farm Road,  
London N.W.1

**Telephone No: 01-586 7643**

**Stand: E16**

## **H & L BRIGGS,**

Unit 32J,  
Heming Road,  
Washford Industrial Estate,  
Redditch, Warcs.

**Telephone No: 0527 26624**

**Stand: G7**

## **BRADBURY BARNES BMX,**

5a Brick Knoll Park,  
Ashby Road,  
St.Albans, Herts.

**Telephone No: St.Albans 60482**

**Telex: 847777 BBBMX**

Bradbury Barnes BMX have clinched an exclusive European distribution agreement for the complete range of Patterson racing BMX products, as used by 1980 World BMX Champion Brent Patterson. This includes the special chromoly Patterson frame and special BMX padded jeans and jerseys.

Bradbury Barnes also distribute the Scorpion, Duster and Torher BMX bikes along with accessories by A'me, Pro-Nec and Panda. Colourful BMX clothing and magazines will be available from the Bradbury Barnes Stand, and dealers can see a complete range of BMX bikes with special dealer terms for orders placed at Bike '81.

**Stand: C5**

## **BRANDS HATCH RACING,**

Fawkham,  
Nr. Dartford, Kent DA3 8NG.  
**Telephone No: 0474 872331**  
**Telex: 96172**

The Brands Hatch Racing School for bikes and karts is the largest of its kind in Great Britain. It provides the ideal opportunity for members of the public to either realise their once in a lifetime dream to drive a racing machine on a race track, or to start on a course of race training which could eventually lead to an actual race.

The motorcycle school operates at Brands Hatch, Mallory Park and Snetterton, and consists of 20 Honda 400N Supersports modified for racing by Mocheck. The Kart school operates at Brands Hatch and consists of 12 Zip Shadow Honda karts.

Throughout the exhibition Brands Hatch Racing is making an exclusive offer to the public attending the show.

If you visit the Brands Hatch Stand, and pay a £3 deposit you will be entitled to 5 free laps, giving you 25 laps instead of 20 laps. Further details can be obtained by writing to Brands Hatch Racing, Fawkham, Nr.Dartford, Kent.

**Stand: B29**

## **JEFF BRETT MOTORCYCLES LTD,**

315 Euston Road,  
London N.W.1.

**Telephone No: 01-388 1988**

Our Stand will be an extension of our Euston Road accessory shop where customers will be able to find various items from bike alarm systems to crash helmets.

Our main feature will be our leathers where we will have for sale a huge range of jackets, jeans, boots and full leathers at very competitive prices.

We will be specialising in "Eagle Leathers" merchandise which we have found to be a firm favourite with the public. Their low prices combined with high quality and modern styling will make a visit to the Jeff Brett Stand very worthwhile.

**Stand: H51**

## **CHARLIE BROWNS CASH & CARRY**

42 Ashwell Avenue,  
Camberley,  
Surrey.

**Telephone No: 0276 20645**

**Telex: 27530**

Safety Helmets: Electro, Jeps, Nava, AGV.  
M/C Luggage: throwover bags, tote bags, tank

top bags, softy top boxes, moto X bags,  
shoulder bags, sports bags.  
M/C Boots: Alpine Stars.  
Leather Jackets: Helco jackets.  
Yoko Jeans & Gloves: trials/Moto X/BMX.  
M/C Anti-Theft Locks.  
Silver shield visor anti-glare shield.

**Stand: H35/H29**

## **JOHN BROWN WHEELS LTD.**

**Warwick Lane,  
CV34 5YA.**

**Telephone No: 0926 496131**

We will have our full range of top quality crash helmets on sale including the new Bellstar and AGV's XI. Also the ever popular JBW fibreglass integral helmet, BS249S/77 and still only £29.95. On our separate clothing Stand we will be showing for the first time in the UK our new range of quality leather clothing, again priced to be within reach of everyone.



**Stand: D1/D3**

## **CAPITAL RADIO,**

**P.O.Box 194,  
London NW1 3DR.**

**Telephone No: 01-388 1288**

**Stand: H12**

## **CDS ACCESSORIES,**

**Unit 21, Rich Industrial Estate,  
Crayford,  
Kent.**

**Telephone No: 0322 56521**

CDS Accessories make the show complete with their Stand of chrome screw kits, complete with keys to replace your cross head engine casing screws. Due to demand they are re-introducing their super sports seats, along with their very successful engine protectors in black nylon coating or chrome plated, also on sale are T-shirts, gloves, seat covers, tank covers and of course the ever popular tubs of assorted bolts, nuts, washers and cap screws. If you miss the Stand or require any products after the Show CDS run a very efficient mail order service.

**Stand: C9**

## **CHATER & SCOTT LTD,**

**8 South Street,**

**Isleworth,**

**Middlesex TW7 7BS.**

**Telephone No: 01-568 9750**

Chater & Scott have on sale, motorcycle books, posters, badges, workshop manuals. Special for the Show, Raynes motorcycle manuals at £1.00 off recommended price, only £2.95. On sale will be an extensive range of motorcycle books. All people at the Show will be most welcome at our Stand. Please note that Chater & Scott have moved to a larger shop, no problem with parking and no yellow lines outside the shop. Phone for immediate despatch of your motorcycle or car books. Access and Visa welcome.

**Stand: M1**

## **CHRISTIE'S (SOUTH KENSINGTON) LTD,**

**85 Old Brompton Road,  
London S.W.7.**

**Telephone No: 01-581 2231**

A unique display of vintage motorcycles - some from the Beaulieu collection.

**Stand: F8**

## **COLCHESTER/HAVERHILL MOTORCYCLES,**

**85 East Hill,**

**Colchester,**

**Essex CO1 2QT.**

**Telephone No: 0206 867298**

For the first time we will be offering the fabulous V1000 Hesketh full production model for sale from our Stand for delivery after the Show. This is a golden opportunity to be one of the first owners of a all new British Super Bike.

We will also have a full range of Harley Davidson machines on show with some extra special finance deals. Plus some still at Pre Tax Prices.

We also have a full range of Moto Guzzi, Ducati, BMW, Honda, Suzuki and Yamaha always available at super low finance.

Ask Us Today

**Stand: F14**

## **COMERFORDS LIMITED,**

**Oxford House,  
Portsmouth Road,**

**Thames Ditton,**

**Surrey.**

**Telephone No: 01-398 5531**

To ride a Suzuki is to experience a combination of performance, handling, road-holding and braking that no other machine can offer... and Comerfords, one of London's oldest established motorcycle dealers, will have the full range of new Suzukis, including the fabulous 550, 650 and 1100cc Katana super sports machines, on display.

Other new machines which will be at the Show are the FR50 moped, GSX400T with its American styling, GSX400F and GS650T. Off-road models, including the four-stroke bikes, will be there too. There will be a works Suzuki RG500, as raced by Grahame Crosby, on show.

Comerfords are backing each and every machine with one of the best equipped and staffed workshops in the country and with their own reputation built up over the past 56 years.

**Stand: A2**

## **CORNISH FOODS,**

**18 Higher Pumpfield Row,  
Pool,**

**Redruth, Cornwall.**

**Telephone No: 0209 213706**

**Stand: H54**

## **CROSSBOW EQUIPE,**

**274 Haydons Road,**

**Wimbledon,**

**London S.W.19.**

**Telephone No: 01-543 5141**

Moto Guzzi Le Mans fitted with our twin light fairing/tank seat unit braced front mudguard, custom sprayed dark metallic red, gold and black. Kawasaki 1000 fitted with our Kawasaki SS twin light fairing custom sprayed. Laverda 1000 mono shock framed special fitted with new half sports fairing being launched at Show.

Honda 900 fitted with our twin headlight fairings. Custom sprayed silver/dark blue metallic/white.

Moto Guzzi V50 fitted with our V50 special fairing possibly also CS750 Suzuki fitted with our t/light fairings sprayed in works colours. Our retail counter in addition to above items will be selling our range of P.R. silencers for Moto Guzzi Le mans, plus new model for the V50 Ducati Pantah (new model) P.R. silencers. Plus pattern Guzzi and Ducati silencers. A range of fork braced fibre glass front mudguards for most machines all the range are new and first time available. These have been developed from our successful Guzzi braced front guard. Also rear sets/Jebs helmets/full range Bob Heath visors/cibies at 25% discount etc.

**Stand: H38**

**EDEN LEATHERS  
(CURNOW LEATHERCRAFT  
LTD),**

**Elliott Works, Elliott Road,  
Bromley, Kent BR2 9NT.**

**Telephone No: 01-464 9509**

Curnow Leathercraft Ltd., one of the UK's leading specialist leathers goods manufacturers will be exhibiting at the Bike '81 exhibition on Stand H38 and will feature a comprehensive selection of products from their range of motorcycle clothing accessories.

A major feature on the Stand will be the company's range of 'Sam-Browne' fluorescent belts - an invaluable aid to rider safety in bad light. Also shown will be a selection from Curnow's popular range of solid hide studded leather belts and wrist bands. Of particular interest on the Stand will be the ever popular handlebar muffs which fit most motorcycles and mopeds, and aid control of machines during cold or bad weather.

As a direct result of requests at last year's Show we have produced a special wallet for motorcyclists. If you have not seen the rave reviews in the Motorcycling Press come along and see for yourself.

These items should be available throughout the country from selected stockists. In the event of difficulty in obtaining any of our products please contact EDEN LEATHERS (CURNOW LEATHERCRAFT LTD.) 01-464 9509.

**Stand: K5**

**CUSTOM LIDS,  
249/251/253 Westgate Road,  
Newcastle-Upon-Tyne.**

**Telephone No: 06614 3582**

Custom Lids will be selling the new AGV colours for the X3000/2, a very wide colour choice is available. Also on show will be the fabulous K8 from Kiwi, as well as the revolutionary K9 also from the Swiss based Kiwi company.

Competitively priced open faced glass fibre helmets make Custom Lids a worthwhile visit for the safety conscious who also require style. A good selection of custom painted helmets completes the freedom of choice.

**Stand: D26**

**CODNOR LIGHT  
FABRICATORS LTD,  
Birchwood Way,  
Cotes Park Industrial Estate,  
Alfreton, Derbyshire.**



**Stand: E3**

**D & G LEATHERWEAR,  
Unit 3, Recovery House,  
Sheffield Road,  
Barnsley S70 4PJ.**

**Telephone No: Barnsley 89208**

Manufacturers of leather motorcycle clothing made from best quality heavy duty English cow hide.

Made in three colours, plain and quilted style jackets, mens, ladies and boys sizes, jeans - plain and quilted styles. In sizes 26-34 waist.

Address: Unit 3, Recovery House, Sheffield Road, Barnsley S70 4PJ. or 94 High Street, Leicester.

**Stand: J15**

**DIAL A STYLE LIMITED,  
Clearway House,  
Edenbridge, Kent.**

**Telephone No: 0732 863574**

**Telex: 95671**

Badges of all kinds! High quality embroidered badges with colourful high relief effects. From tiny 'stick-ons' of 1" to the large back patches, maximum size 18" square!

High quality metal and enamel badges, brooches, tie-tacks, pendants, silver plated spoons with logos. Chrome buckles with any design incorporated.

Button badges of various sizes and hand made gold and silver wire badges.

The cloth variety are guaranteed for washing and dry cleaning and have fray proof overlapped borders. They can be sew-on or iron-on.

**Stand: D9**

**DIXON RACING LTD,  
1 High Street,  
Godalming,  
Surrey GU7 1AZ.**

**Telephone No: 04868 28928**

**Telex: 859606**

The centre piece of our Stand will be the new 550cc Bimota Kawasaki KB2. Also other Bimota models will be on view.

A full range of Yoshimura parts, including the new GSX 1000 road and track camshafts, and 1200cc conversion kits, plus Britains fastest seller, the Yoshimura exhaust system, will be on sale for most four-stroke Honda, Suzuki and Kawasaki models. Other

specialities include Yoshimura paddock jackets, T-shirts, patches, and key fobs. New Italian rear set kits for many models, and our exclusive 'action' camera bag.

Hot off the press is the 1981/2 'Dixon Racing' catalogue, available for the first time at Earls Court.

**Stand: H21**

**PETER DOBBS LEATHER  
GOODS LTD,  
17b Little Park Street,  
Wellingborough,  
Northants.**

**Telephone No: 0933 79306**

**Stand: D11**

**DRESDA AUTOS LIMITED,  
452 Bath Road,  
Longford, Middlesex.**

**Telephone No: Colnbrook 4943**

We will be exhibiting a new Dresda frame kit, to suit all bikes larger than 400cc, also a complete bike housing, a Honda CB900 engine. Backing it up with accessories that Dresda are famous for i.e. box section swinging arm, tapered headrace bearings and new solitaire fairing.



**Stand: D28**

**EASY RIDER M/C  
CLOTHING LTD,**

**327 London Road,  
Camberley, Surrey.**

**Telephone No: Camberley 25469**

Easy Rider, with retail outlets in Camberley Surrey, Staines Middx and Sutton in Ashfield, Notts, specialise in clothing and accessory gear. Once again for Earls Court many super bargains will be available especially in gloves. Leather scramble gloves from £3, unlined racing gloves from £5 and lined gloves from £7. Competition boots and the new Derri boot will be featured. Catering for all ages/sizes.

Leathers will be highly competitive, with Lancer style jackets priced from £39.75 and racing suits from £100. Competition jeans both leather and nylon with matching A.C.U. approved jerseys will team up with goggles, body belts, scarves for both men and boys.

Winter clothing this year will be better value than ever before, with 100% waterproof GUARANTEED! Suits available and lined and unlined from £15! Waxed cotton garments too will be offered at super low prices. Helmets aren't forgotten and two fibre glass integral models will be available from £25. Ladies models and sizes will be offered in gloves, boots, clothing and leathers. Both Access and Barclaycard facilities accepted.

**Stand: B26**

**ELFOR LEATHER LIMITED,**  
P.O.Box 9, Unit 2A,  
Riverside Industrial Estate,  
Ramsey,  
Isle Of Man.

**Telephone No: 062 481 4999**

**Telex: 627949 ELFORL G**

Elfor Leathers Limited is a new Manx company producing the highest quality leather products, primarily for the motorcycle trade. Only the highest quality tooling hide is used for the wallets, tool rolls, coaster sets, beer-can holders, bags, saddle bags, key rings etc., which are very competitively priced. The goods are available with or without deep-embossed motorcycle designs, in plain or hand-stained black or brown. All the fittings used are solid brass (plain or nickel plated) and the goods are waterproofed.

Leather clothing includes first quality leather waistcoats and caps, and chamois leather shirts.

Leathergoods can also be specially commissioned or printed with a company logo, e.g. for gifts.

There's something for everyone at this Stand - well worth a visit.

TRADE WELCOME.

BMX bikes on show at Bike '81 will include the MX1, Starbuster, Superstar, and the works replica from the PRO-STAR range. The DIAMOND BACK range will include both the one and three piece crank models as well as the full range of accessories - back pads, DB team shirts, gloves, pants, jerseys.

Top American BMX racer and DIAMOND BACK pro, Harry Leary, will be on the Stand to meet all BMX racers and interested kids. Our PRO-STAR and DIAMOND BACK Factory Team will be giving demonstrations and racing on the special BMX course during the show. Look out for them.



**Stand: E16**

**GEMINI SIDECARS,**

285 Dudley Road,  
Winson Green,

Birmingham B18 4HA.

**Telephone No: 021-454 2266**

Exhibit Yamaha X51100 fitted leading links for sidecar work. Sidecar is the top model from the range being the Lo-line, 3/4 seater. Available in any matching colour combination to customers requirements. The other model on show is a short version of the 3/4 seater standard type. There are also available models from a child/adult version and also a double/adult. We manufacture four basic models, but also build specials to order, or from peoples designs. We also are the main distributors for Watsonian in Birmingham. We export to the Continent and Europe.

**Stand: H23**

**GOODRIDGE UK LTD,**

Colins Road,

Totnes, Devon TQ9 5TJ.

**Telephone No: 0803 862007**

**Stand: D8**

**G.P. MOTORCYCLE  
ACCESSORIES,**

19 Whitehouse Road,

Woodcote, Reading, Berks.

**Telephone No: 0491 681487**

G.P. Motorcycle Accessories will have on display a wide selection of fairings manufactured by Churchyard Mouldings of Weymouth. In the line-up will be the popular wedge model including the new Mark 3 version with interior moulding and luggage compartments - and the actual model and fairing tested by Bike Magazine.

A departure from the full fairing theme is a new 3-piece fairing comprising a handle bar, mounted top section with frame mounted lowers. Top and bottom sections are available separately if required. At present, only available for Honda CX500 but other models should be available shortly.

As a distributor of FLF Products, G.P. M/C Accessories will also be exhibiting for the first time a touring version of the Rotherham, South Yorks based company's twin headlight operated fairing.

The G.P. range of luggage equipment has been extended from fibre glass panniers to include tank and saddle bags manufactured in durable vinyl.

A selection of replacement screens, mirrors and fairing spares will be available on sale from the Stand.

**Stand: C4**

**GRAND PRIX  
PROMOTIONS,**

132 Sandy Lane South,  
Wallington, Surrey.

**Telephone No: 01-647 0785**

**Ext. 36**

Well, here we are again, back at Earls Court with loads of new and exciting goodies for you to spend all your money on. If you feel like a good argument, having satirical abuse heaped on you or just being laughed at, come and see us. We have our usual full range of T-shirts (black of course), stickers, patches, lapel badges, heavy metal badges, scarves, hats and of course our speciality - BUMSEN. So don't forget to bring all your surplus Swiss francs, dollars, D.Marks and ladies over to our stand and fling them in our direction - You will have the satisfaction of making us very happy.

**Stand: K24**

**FREEWHEELER LEISURE  
PRODUCTS LTD,**

Wellesbourne House,  
Wellesbourne,

Nr. Warwick CV35 9JB.

**Telephone No: 0789 841111**

**Telex: 311510**

Freewheeler Leisure Products are the U.K. distributor for DIAMOND BACK and PRO-STAR products.

**Stand: C12**

**GLO-MARKA LTD,**

211 Lynchford Road,  
Farnborough,  
Hants.

**Telephone No: 0252 513314**

Glo-Marka is the high performance range of retro-reflective safety items for motorcyclist and motorcycle use. The range includes Sam Browne's Sash, Belts, Dots and Triangles.

Motorcyclists should be aware of other types. Fluorescent types only work during the day, beaded type retro-reflective material can be affected by rain, oil and dirt and performance diminished.

Glo-Marka has a unique prismatic structure which reflects a very high proportion of incoming light and the structure is protected by a layer of clear or coloured transparent material.

## THE HOUSE OF WHEELS

- ★ **PIRELLI** PHANTOM GORDON TYRES
- ★ **KRAUSER** LUGGAGE EQUIPMENT
- ★ **motad** EXHAUST SYSTEMS
- ★ **CIBIE** LIGHT UNITS
- ★ FULL RANGE OF RICKMAN EQUIPMENT
- ★ BOYER ELECTRONIC IGNITION KITS
- ★ KONI SHOCKS
- ★ H.O.W. "STRATUS" HANDLEBAR FAIRINGS
- ★ LOTS OF OTHER SHOW GOODIES

ALL ACCESSORIES AT SUPA-DUPA  
SHOW PRICES COME AND SEE US 1ST ON  
**STAND D12**

**LONDONS No. 1  
ACCESSORY SHOP**

309/311 HIGH ROAD, LEYTONSTONE, E11 4JT  
Telephone: 01-558 0921 (4 lines)



### "Super Light" Forged Pistons

They do it all for you!

Now available: Replacement pistons for most engines,  
oversizes up to 2mm.  
Also! Extensive range of super big-bore kits.

Stand: C7

From sole UK importers:

**ROY BALDWIN INTERNATIONAL LTD,**  
1 Vange Mews,  
St Margarets Street,  
Rochester, Kent.  
Tel: 0634 407162

Stand: C1

### GRID GEAR BIKE CLOTHING,

8 Embassy Court,  
Welling, Kent.

Telephone No: 01-316 0083

Grid Gear Bike Clothing retailers of all motorcycle clothing and accessories at discount prices. Our new products feature wax cotton jackets with dayglo patches for safety at night, reversible belts, and our leathers feature a new technique of safety padding which is also elasticated for extra comfort in wear whilst affording the full protection of the leather.

Essex SS4 1X.

Telephone No: Southend (0702)  
549637

Hadleigh Custom will be showing its full range of accessories and performance equipment for the larger Japanese machines, with a special emphasis on USA imports like K & N air filters, Action Fours tuning equipment, S & W or Mulholland suspension etc. A full range of Italian "FUTURA" fairings will be on the Stand together with many of Hadleigh Custom's own products like replacement mudguards and heavy duty clutches. Of special interest will be the "Force 1" air/spring shocks by Mulholland (who equipped the USA factory Hondas ridden by Freddie Spencer). The "Force 1" shocks, with their alloy bodies and unique air and spring combination were chosen by Craig Vetter for his "Mystery Ship" Kawasakis, as the "best suspension currently available".

As always, there will be lots of special bargains at super low "show only" prices, so come along and check them out.

Northwich CW8 1AH.

Telephone No: 0606 77333

If we can't discount it we won't sell it. That's the motto of this company from Northwich in Cheshire. The company was formed some three years ago by two bikers who felt it was about time discounting came to motorcycle spares, accessories and clothing.

At this show they will be offering the latest Kangol Falcoln 80's, Falcoln classics and Phi Read helmets all at enormous discounts. There will be all leather gloves under £10, a full range of British made leathers and water-proofs at amazing prices plus of course their own chain lube - ZONK!

Last but far from least look out for the latest from "Quasar" man Malcolm Newall - "The Halewood Flying Golden Squirrel" and if the name boggles your mind, wait till you see the bike - Goldwings will never be the same!!

Stand: H4

**HADLEIGH CUSTOM,**  
28 Purdeys Way,  
Rochford,

Stand H19

**HALEWOOD EQUIPMENT  
LTD,**  
43 Chester Road,

Stand: B1

**HARRIS CLOTHING,**  
No. 47 Dennis Way,  
Cippenham,  
Berks.

Telephone No: Burnham 64505  
When were you screwed - for your leather? Do  
yer skins let in the weather? You drip head!.....

Shift to "Harris Gear" "The Bikers Stand" (Erection B1 next to the "Brew Shop"). Geared down prices on: leathers, wax cotton, gloves, boots, lids, etc.

"Get Clobbered with Harris".  
P.S. CU AT B1.

**Stand: H3**

## **HARRIS PERFORMANCE PRODUCTS LTD,**

**6 Marshgate Industrial Estate,  
Marshgate Drive,  
Hertford, England.**

**Telephone No: Hertford 51600/  
58461**

The "Magnum" road bike kits, developed for the successful road racing motorcycles designed, developed and manufactured by Harris P.P. Ltd. These kits when fused with standard components from Kawasaki 2900/1000, Suzuki GS1000/GSX1100 or Honda CB900 build into genuine "Racers On The Road".

Exhibited for the first time a new range of exhaust systems for the discerning sports enthusiast. Not a price conscious bolt on replacement, but a performance exhaust developed and built on the same line as Formula 1 racing exhausts used by top name teams and riders hence the name "Works Collection".

**Stand: H44**

**HELLAS ENTERPRISES,  
208 Lower Addiscombe Road,  
Croydon,  
Surrey CRO 7AB.**

**Stand: D19**

## **HIDEOUT LEATHER,**

**Dales Brewery,  
Gwydir Street,  
Cambridge.**

**Telephone No: Cambridge 61450**

Hideout Leather - from Cambridge, we specialise in all made to measure clothing for the motorcyclist, including racing leathers, as worn by Steve Parrish, Dave Potter, Kevin Wretton and Dave Railton.

**Stand: C15**

**HOUSE OF BROOMFIELD,  
Fan Court,**

**Longcross,  
Surrey.**

**Telephone No: Ottershaw 3811**

**Stand: D12**

**THE HOUSE OF WHEELS,  
309-311 High Road,  
Leytonstone,  
London E11 4JT.**

**Telephone No: 01-558 0921/4**

Come and meet "Mr Silly Price" on the House Of Wheels Stand. He will be offering Pirelli tyres, Cibie, Koni shock absorbers, Krauser luggage and Rickman accessories.

On display will be the Stratus-Cruiser range of fairings, along with a new 'de-luxe' version.

Also of interest will be Boyer-Brandsen ignitions, and top boxes at very special prices. When visiting the Stand don't forget to ask for details of our special Show Bonus!!!

**Stand: J3**

**H.R.S. MOTORCYCLES,  
6 Cleveland Place East,  
Bath, Avon.  
Telephone No: 0225 28078**

**Stand: A17**

## **J & D CATERING,**

**49 Garrick Close,  
Eastern Green,  
Coventry.**

**Telephone No: Coventry 469973  
or 463612**

J & D Catering - ¼lb beefburgers with assorted relishes and ¼lb real pork sausage.

**Stand: H11**

## **J & M ACCESSORIES,**

**67 Kingsdown Passage,  
Kingsdown,  
Bristol BS6 5UG.**

**Telephone No: 0272 44470**

**Stand: D15**

## **INTERSTATE LEATHERS,**

**91-93 Harborough Road,  
Kingsthorpe,  
Northampton.**

**Telephone No: 0604 718100**

We will be exhibiting our full range of leathers, all manufactured at our Northampton branch, boots, gloves, accessories, etc. There will be several new styles on show for the first time including a "Flying Jacket", real sheepskin lined and a "Patrol Jacket" with many special features.

All our goods are manufactured in hide, the only material suitable for protective motorcycle clothing. We operate a world-wide mail order service, our own finance and take Barclaycard and Access: all available at our Stand.

**Stand: D21**

## **KAY EQUIPMENT,**

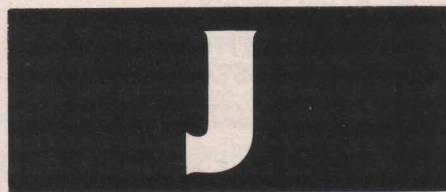
**39 Margetts Road,  
Kempston,  
Bedford.**

**Foyer**

## **INTERVISUAL ADVERTISING LTD,**

**22 Brook Street,  
London W1Y 1AE.**

**Telephone No: 01-499 2503**  
Publishers and audio visual specialists.





**Telephone No: Bedford 855870  
or 771115**

Clothing manufacturers, Kay Equipment, will have their complete range of nylon waterproof clothing available with a completely new process of sealing the seams. The new process is a heat sealed tape which when applied makes the seam as water resistant as uncut material. The prices range from just over £20 for the unlined one piece suit, through to a lined two piece at £37.50.

Complementing the nylon will be Kay's own quilt lined wax cotton two piece at £43.45 plus wax cotton overunits at £4.75.

The company will also welcome enquiries from wholesalers which is where the bulk of the production is aimed.

**Stand: F4**

## **KEDE PRODUCTS,**

**Unit 15,  
Priorslee Trading Estate,  
Priorslee, Telford,  
Shropshire.**

**Telephone No: 0952 612278**

One piece suits, nylon, lined and unlined. Guaranteed 100% waterproof material tested to BS 3546. All seams and stress areas are hot air tape welded to BS 342429C.

This method of taping seams is far superior to the method of doping seams previously used.

**Stand: F16**

## **KEN KAY KAWASAKI,**

**The Roundabout,  
Stopsley,  
Luton.**

**Telephone No: 0582 27416**

Here are two very special offers available to visitors to the Ken Kay Kawasaki Stand who purchase a Kawasaki roadster of over 400cc.

Firstly, any such customer will be given a free top quality leather jacket, worth some £80, and then their machine will receive the benefit of a full *three year's warranty*.

This warranty consists of the standard manufacturers comprehensive 12 month unlimited mileage warranty, followed by an extended warranty for the next two years on a large number of specified components, and includes both parts and labour costs. And not only is this three-year peace-of-mind motorcycling totally unique to Ken Kay Kawasaki, it has another attraction. It comes completely free of charge.

There will be a comprehensive selection of the very latest Kawasaki machines on display. These range from the attractive sports mopeds designed for the enthusiastic sixteen year old, to the largest road burners on which Kawasaki have earned their reputation as being the builders of performance machinery.

Also available will be a large number of off-road accessories such as the products of Stilmotor of Italy and JT Racing of the USA, as well as the acclaimed Boyesen Reed valves.

One machine displayed but most certainly not for sale is the first prototype four cylinder watercooled two stroke KR500 racer, which Kork Ballington rode during the 1980 season.

**Stand: E7**

## **JOCK KERR M/C DEVELOPMENTS LTD,**

**31 Chambers Street,  
Hertford,  
Hertfordshire.**

**Telephone No: 0920 61765**

We produce a wide range of turbo charger kits for motorcycles of 250-1300cc machines. We will have on exhibit 1000cc CBX Honda, 400cc Honda and 250cc Honda motorcycles all turbocharged. Also on display will be separate turbo kits.

We shall be displaying our complete range of standard tuning equipment for 4 stroke motorcycles such as overbore kits for 125cc motorcycles to 1100cc, gaspowered heads, performance cams etc.

Lastly we offer a unique reconditioning service for motorcycle engine parts such as crankshafts, cylinder head, barrels etc.



**Stand: F2**

## **L.D.C. MOTORCYCLE CLOTHING & ACCESSORIES LTD,**

**73 Shirley Road,  
Shirley,  
Southampton, Hants.**

**Telephone No: 0703 37936**

L.D.C. are most certainly going places! Fresh from their recent appearance at Silverstone, where the many visitors to the British Grand Prix were introduced to the excellent service and incredibly low prices of this "Go-Ahead" firm, L.D.C. are at Bike '81 in the same big way.

L.D.C. are presenting a large range of helmets, leathers, waterproofs, boots, gloves, visors, soft luggage and manuals, amongst which will be many well known brand names - Bell, Griffin, AGV, Jeb's, Nava, Helco, Eagle, Kett, Bob Heath, Power Grip, Haynes and Catworth, to name but a few.

L.D.C., exclusively, are presenting the two highly acclaimed racing helmets from Jeb's, the "Cecotto" and "Regazzoni", well worth looking at. Also, only available from the L.D.C. Stand is the very popular range of "Power Grip" gloves by Stuart Hadeley Ltd.

L.D.C., well known for competitive pricing on all their products are making Bike '81 no exception to the rule, and it should be noted, all their goods are available on mail order, at no extra cost!

L.D.C. are most certainly going places, so, if you are too, don't miss out, get along to their Stand - there's a pleasant surprise waiting for you!

**Stand: J9**

**J. LANG & CO,  
Wood Street Mills,  
Chapel Lane,  
Wigan, Lancs.**

**Stand: E16**

**LAWSON ENGINEERING,  
50 London Road,  
Bishops Stortford,  
Herts.**

**Telephone No: 0279 58051**

White single seater exhibited. We also manufacture a child/adult with fibre glass hood, with windows and vents. All sidecars available in white, black, red or blue. Each chassis tailor made to fit individual machines 250cc upwards. Unique cantilever suspension gives a smooth ride.

**Stand: H53**

**LICHFIELD BIKE TYRE  
CENTRE,  
Cherry Orchard Industrial Estate,  
Mesnes Green,  
Lichfield,  
Staffs.**

**Telephone No: Lichfield 53919**

Dunlop motorcycle tyres, complete range of NGK spark plugs, EVC brake pads - miscellaneous accessories.

**Stand: D30**

**LINVAR LTD,  
Berkby Road,  
Leicester.**

**Telephone No: Leicester 760181**

Linvar Ltd, world leaders in small parts storage, materials handling, display equipment and work centres are exhibiting a range of special offers.

The Linvar system revolves around the louvered panel which when used in conjunction with the extensive range of semi-open fronted polypropylene containers and the vast range of specialised accessories can provide an answer to virtually every storage problem.

A special offer will be of particular interest to the motorcycle trade, full details of which will be available on the stand.

**Stand: K6**

**LOCAL FARM  
DAIRIES LTD,**

**Cookhams Dairy,  
Sharpthorne,  
East Sussex.**

**Telephone No: 0444 83634**

**Stand: C11**

**LOUD PRODUCTS,**

**353 Holloway Road,  
London N7 ORN.**

**Telephone No: 01-607 1414**

Manufacturers and distributors of T-shirts, badges and other rock and motorcycle accessories. We supply both the retailer and distributor and guarantee a fast reliable service over the U.K. Exporters welcome.



**Stand: C8**

**M & P MOTORCYCLE  
ACCESSORIES,**

**31B St. Helens Road,  
Swansea,  
South Wales.**

**Telephone No: 0792 460549**

Marzocchi & S.W. shock absorbers. Sigma executive equipment. Rickman products. Micron and Alfa 41 exhausts. Izumi chain and sprockets. Girling disc pads.

**Stand: B10**

**MADISON CYCLES LTD,**

**275 Westend Lane,  
London NW8 1QS.**

**Telephone No: 01-431 2494**

Citadel ultra high security moped and motorcycle locks. Developed and manufactured in the United States, the lock has undergone more than 200 independent field tests which have proved its astounding resistance to all the tools used by thieves - bolt cutters, handsaws, crowbars, car jacks, hammers and acids. It is because of this invulnerability that it is the biggest selling high security lock in the United States. In the U.K. we are experiencing a similar trend. As the number and sophistication of thieves increases, the old methods of protection such as steering locks and most cable and chain type locks have proved totally obsolete. It is becoming more and more important to have a good lock that will provide the protection locks are meant to give. There will be Stand demonstrations using bolt cutters and handsaws to show the difference between Citadel locks and the more conventional security devices used by motorcyclists.

**Stand: H16**

**MAITLAND RACING,**

**17 Southampton Road,  
London NW5 4JS.**

**Telephone No: 01-485 0473**

The Maitland Racing Stand displays a wide range of accessories and spares for Japanese motorcycles.

The full range of Hondastyle and Rickman fairings and accessories are shown along with Piranha ignition kits and Izumi chain and chain and sprocket kits.

For the sporting and competition rider there are MTC and Protec performance parts from the USA, and the ever increasing range of Maitland Racing equipment.

**Stand A3**

**MASTER DISTRIBUTORS  
(UK) LTD,**

**23 Cornbury Road,  
Canons Park,  
Edgware, Middlesex.**

**Telephone No: 01-952 2752**

Cler Site - the widely used demister for visors, goggles, spectacles etc. will again be demonstrated.

Visors etc. - the full range of visors, face masks, goggles etc. produced by Bob Heath will again be on show.

Scarves - printed with the name of any motorcycle will be available for enthusiasts. Belts - belts made from spent cartridges and leather.

Badges - a full range of motorcycle badges.

**Stand: J1**

**MEAD SPEED,**

**74 High Street,  
Newport Pagnell,  
Bucks.**

**Telephone No: 0908 610311**

Our twin headlight Eagle fairing will be exhibited but at the moment we are not sure on which bike it will be shown. The L.C. Yamaha Hawk fairing (a road version of the TZ racing fairing) complete with rear sets and clip ons will be on view. We also hope to have a full sports fairing finished and on show fitted to an FS1/E Yamaha.

A full range of other fairings, seats and accessories will be available. A full range of EBC brake pads will be on sale.

New Lodge Insurance Brokers will be offering advice and quotations for M/C insurance for road bikes and also transit of racing bikes.

**Stand: B8**

**MEDWAY MAIL ORDER  
CO. LTD.**

**21 Railway Street,  
Chatham,  
Kent.**

**Telephone No: 0634 42184**

We will be exhibiting the full range of Roy Baldwin International clothing, including gloves, boots, one piece nylon suits and our own wax cotton two piece suit. We will have our range of special winter gloves with aluminium lining and acrylic fur with complete inner fingers (normally gloves are sold without sides in the inner fingers). Also some Sportae, Owen and Demboot items will be on display as will the Barry Sheene racing gloves. A range of balaclavers from rayon to silk will be available and all prices will be very competitive indeed. The Stand will be managed by Robert Rayner.

**Stand: H2**

**MEL LEMOTO,**

**38 Magpie Hall Road,  
Chatham,  
Kent.**

**Telephone No: 0634 47730**

**Telex: 896616 SENDIT G**

Mel Lemoto are 'exclusively cafe racer', which is fairly obvious by their Stand at this Show. Pride of place is taken by our brand new fairing, superbly designed, built for speed, style and stability, displayed on a 1000cc bike that is far from standard. Also displayed, their well known cafe racer kits for the RD250 and