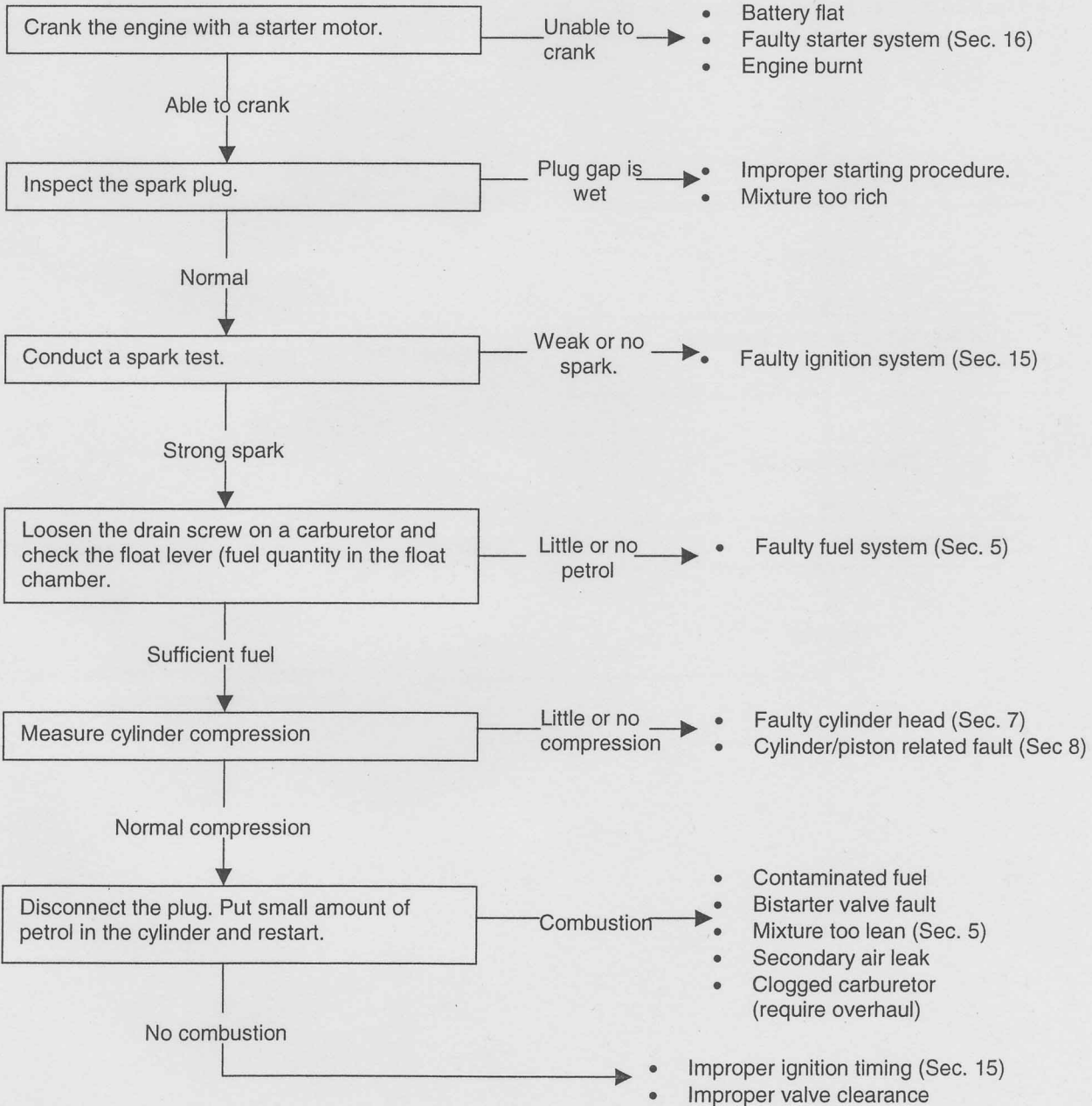


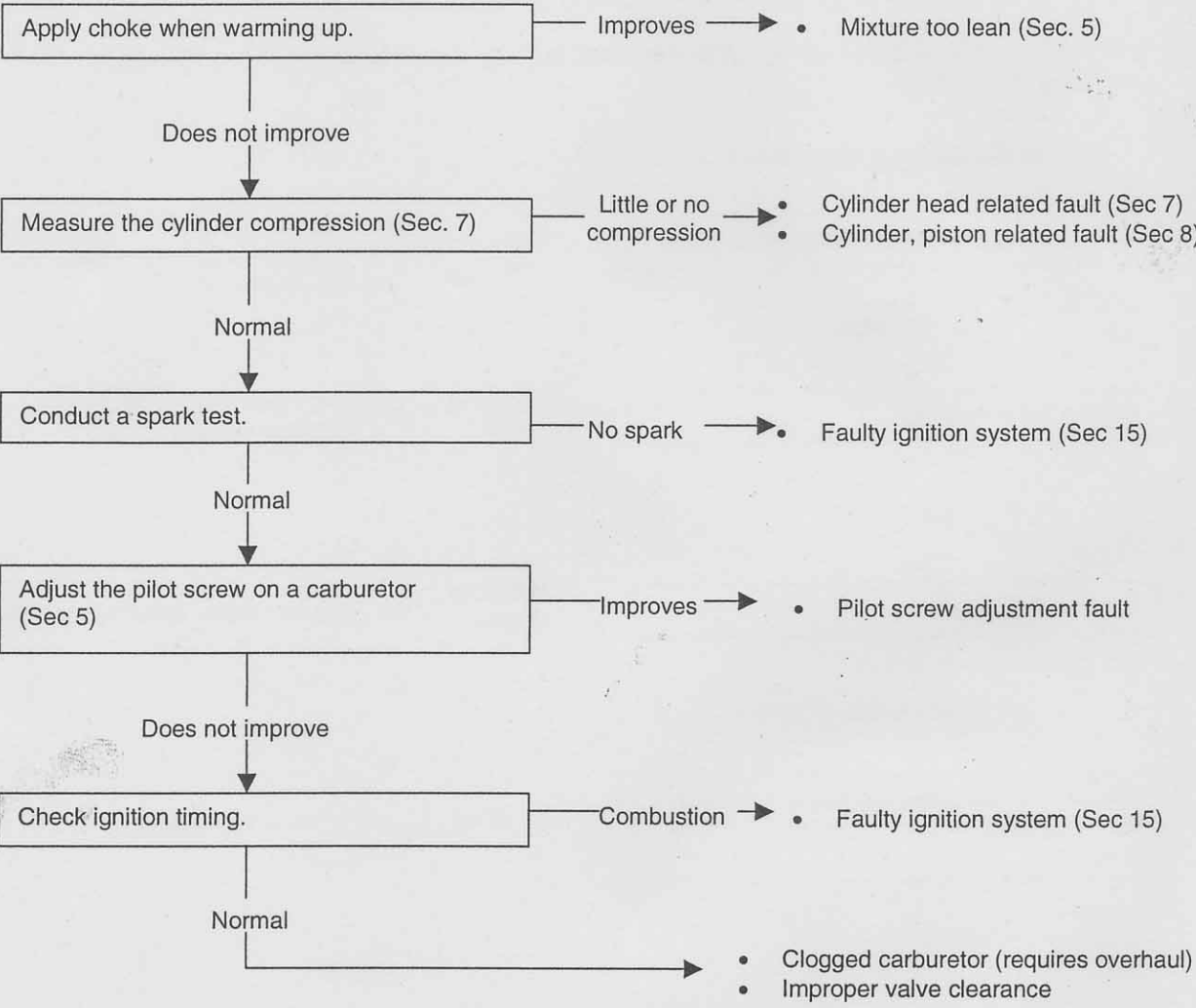
Difficult/unable to start the engine.....	19 - 1	Rough running in med~high speed.....	19 - 3
Unstable/rough idling and low rpm.....	19 - 2	Lack of power/speed in high speed.....	19 - 4

This section describes major engine troubleshooting. Refer to individual sections for other components.

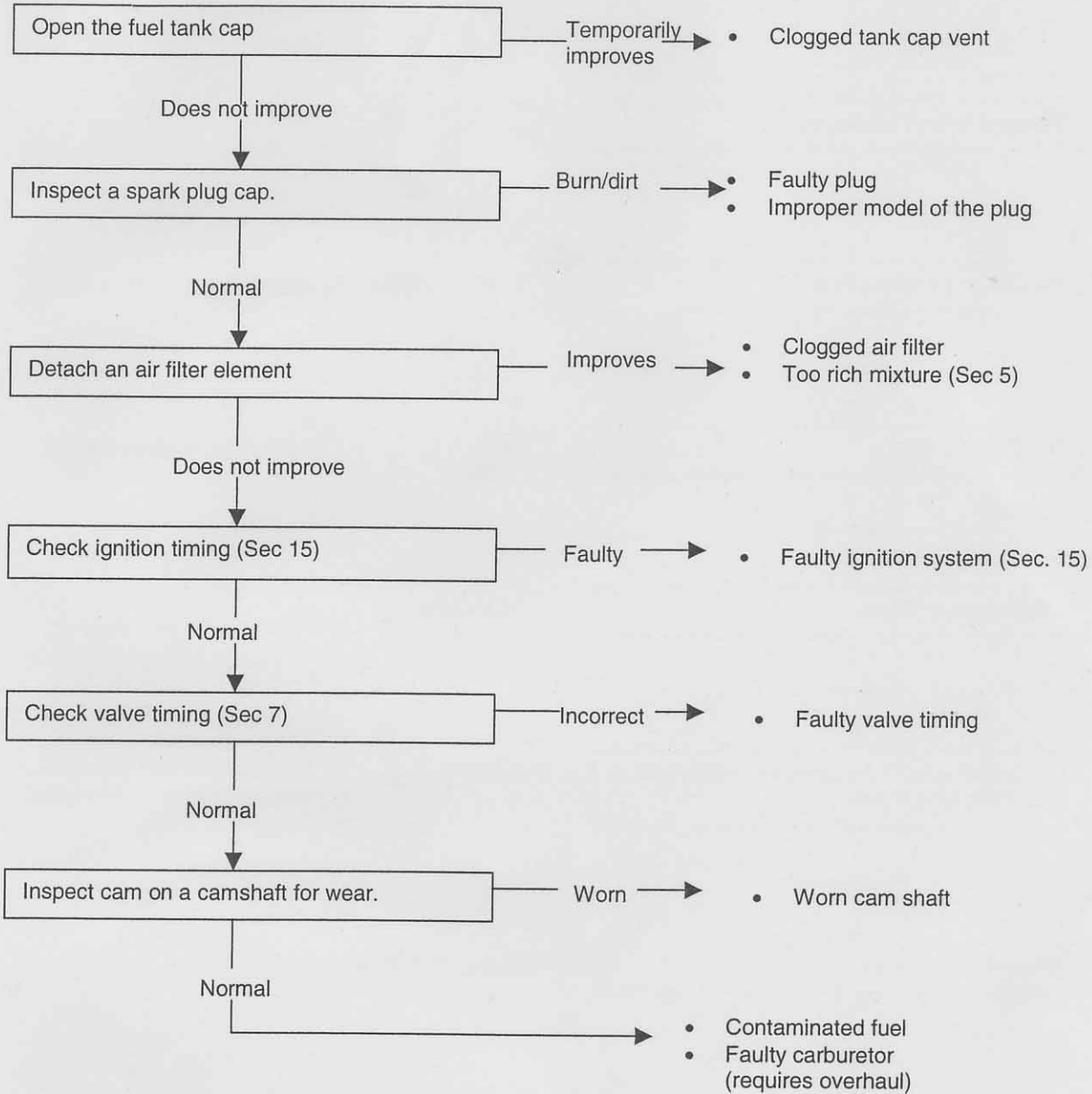
• **Difficult/unable to start the engine**



• Unstable / rough idling and low rpm



• Rough running in med ~ high speed



• **Lack of power/speed in high speed**

