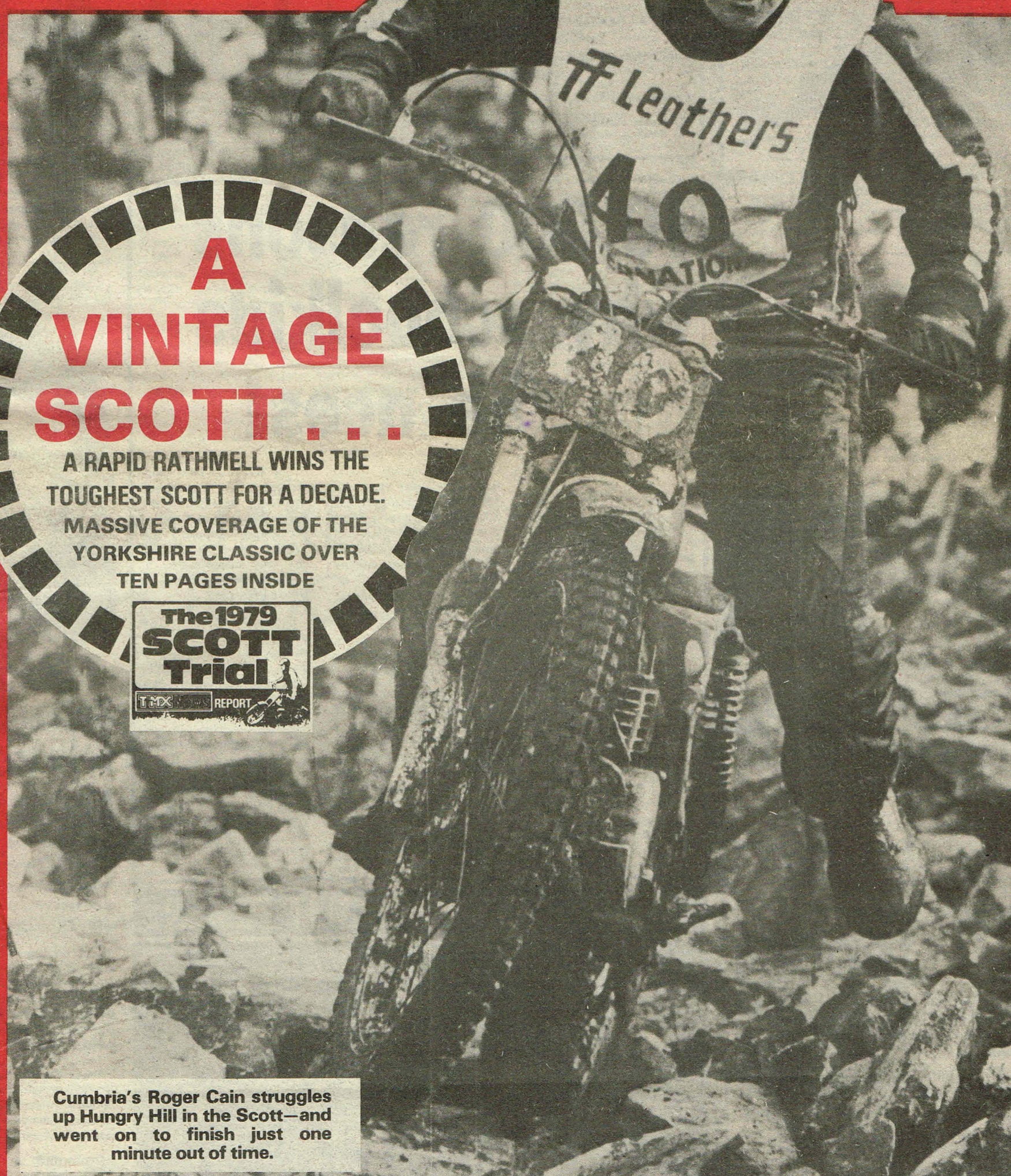


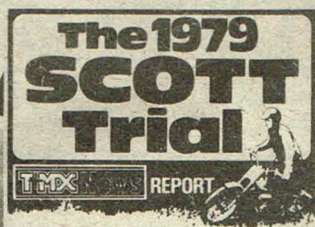
# Trialist Motocross News

Number 129. Friday, November 2, 1979 Price 20p



## A VINTAGE SCOTT...

A RAPID RATHMELL WINS THE  
TOUGHEST SCOTT FOR A DECADE.  
MASSIVE COVERAGE OF THE  
YORKSHIRE CLASSIC OVER  
TEN PAGES INSIDE



Cumbria's Roger Cain struggles up Hungry Hill in the Scott—and went on to finish just one minute out of time.

**BIKE TEST: Yamaha's 250 and 400 IT Enduros**  
— a classy choice for the clubman

EVERYTHING FOR THE  
OFF-ROAD RIDER  
EVERY FRIDAY



Lofting the front wheel is not a natural habit of the Yamahas. High weight makes them feel slightly uneasy when off the ground.

**DAVE DEWHURST, no mean Enduro rider himself, puts the YAMAHA IT's through their paces**

# 'IT's an enduro dream come true'

**WALK THROUGH** the Parc Ferme at any enduro event and one thing is for certain, you will see a lot of yellow paint. In the past couple of years Suzuki have taken a virtual stranglehold on forest-bashing events with a light and nimble machine that requires little maintenance and even less financial

outlay. It may not be quite a match for a KTM or Maico but for the average lad it has been a reliable and affordable Japanese alternative.

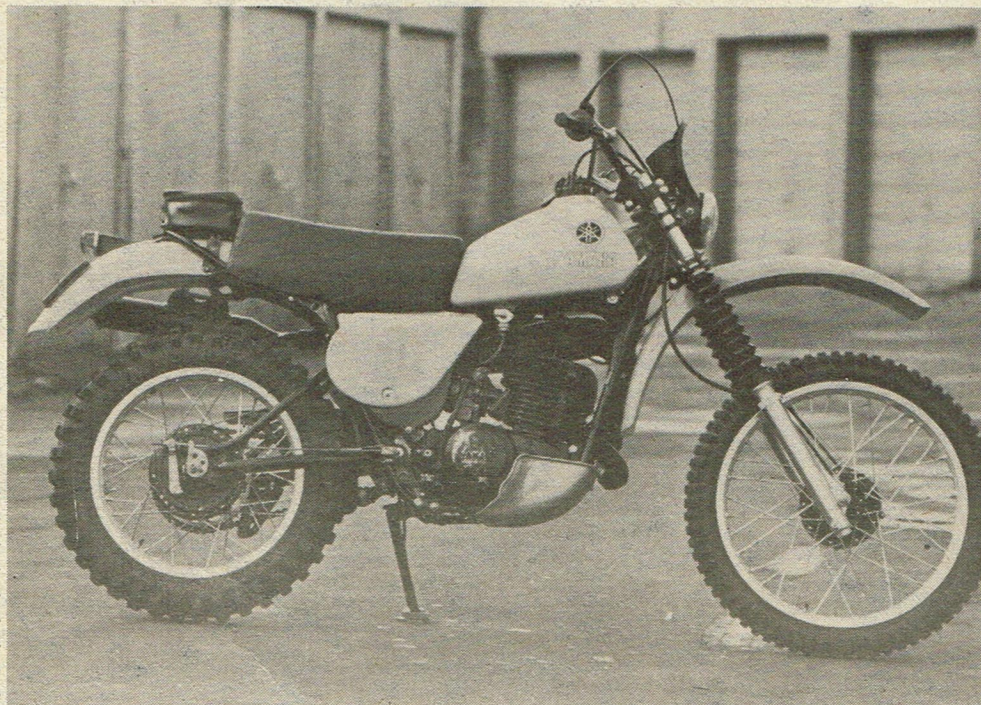
At last there is an alternative to the alternative, with the introduction of the much heralded IT Yamaha range. The American Press eulo-

gised over the 175, 250 and 400 ITs month after month, but 8,000 miles away all we could do was dream about the blue monoshockers. Part of the reason has been Mitsui's — the British Yamaha importers — reluctance to get heavily involved in the off road market. What with plastic petrol tanks to be

converted and the relatively small market that enduro bikes represent, Mitsui thought the ITs were hardly worth the trouble.

Renewed interest in the off road scene has brought new interest in the IT range and enduro riders may find some rather pleasant results. For although like the Suzuki, the Yamahas are not equals of the more expensive European models, they offer reliability and value for money rarely seen outside Japan.

Considered in this light the Yamahas really are superb machines, combining what is now slightly dated motocross technology and trail bike ideas into a slightly porky package that would make the almost perfect trail bike and does a very good job in serious competition. This is where both the 400 and 250 machines score because for those not wanting serious competition every weekend the little monoshockers also make superb trail bikes — a trait not always associated with some of the European machines.



The IT Yamaha is a very business like enduro machine with every possible aid to easy enduro riding.

Continued Overleaf

**LEE  
LB  
BROS**  
41-47 BOLTON BROW  
SOWERBY BRIDGE  
WEST YORKSHIRE

THE NORTH'S  
LEADING COMP. SHOP  
FOR ALL YOUR

**YAMAHA  
SUZUKI and  
KAWASAKI**

COMPETITION MOTORCYCLES  
WITH FULL SPARES BACK-UP  
Telephone Halifax 31727 for details on  
Motorcycles or Spares

## SPROCKET BARGAINS

YAMAHA		SUZUKI	
TY80 . . . . .	£8.00	PE250 . . . . .	£12.25
TY175 (Std) . . . . .	£10.50	RL250 43T . . . . .	£12.25
TY 250 . . . . .	£10.50	RL 250 54T . . . . .	£12.25
YZ 80D-E-F . . . . .	£9.25	PE 175 46 or 48T . . . . .	£12.25
YZ100 D-C-E-F . . . . .	£12.25	RM 125B 60T . . . . .	£12.25
YZ125 Moto X C-D-E-F . . . . .	£12.25	RM 125C . . . . .	£12.25
YZ 250-360-400 . . . . .	£12.25	RM 125N 60T . . . . .	£12.25
DT 175 MX, 250, 400		RM 250-400 . . . . .	£12.25
XT 500 and HL . . . . .	£12.25		
<i>All Gearbox Sprockets for Road, Trail and Motocross</i>			
HONDA		MAICO	
TL125. 52T, 60T . . . . .	£10.50	56T . . . . .	£11.00
MONTESA		HUSQVARNA	
Cota 123-172 . . . . .	£9.00	53T . . . . .	£11.00
Cota 247 UKR . . . . .	£9.00	KAWASAKI	
Cota 348 . . . . .	£9.00	KT250, 52T . . . . .	£10.50
Cappa . . . . .	£12.25	BULTACO	
OSSA		1978 250-325 Works 39T . . . . .	£9.00
Flat to Fit Conversions		76/78 250-325, 46T . . . . .	£9.00
Mk.I and Mk.II . . . . .	£9.00	75 250-325 46T . . . . .	£9.00
		Sherpa pre '75 5/8 x 1/4 46T . . . . .	£9.00

ALL PRICES INCLUDE VAT • P&P FREE

**YAMAHA**  
TY 175 and DT 175 MX 5/8 x 1/4 Conversion, front and rear £13.50 inc. VAT & P&P. (State model)

**FOLDING GEAR LEVERS**  
Yamaha YZ, all models . . . £5.95  
Yamaha TY, all models . . . £7.00  
Suzuki RL, all models . . . £6.30  
Suzuki RM, all models . . . £6.55  
INC. VAT • P&P FREE

**DUNLOP TYRES**  
K190 450 x 18. Our Price £28.50 (RRP £39.17)  
K88 500 x 18. Our price £28.50 (RRP £39.07)  
K88 500 x 17. Our Price £28.50  
K88 510 x 18. Our Price £29.50 (RRP £41.90)

ALL EX STOCK  
Pirelli Trials 400 x 18 . . . £20.50  
Also Metzeler, Trelleborg Barum, Avon  
INC. VAT + P&P £1.50

**HELMETS**  
AGV Motocross . . . . . £43.00  
Bell Motostar Mk.3 . . . . . £59.00  
*The very latest. Inc. P&P*

**FACE MASKS, ETC.**  
Scott Goggle . . . . . £10.00  
Scott Mask . . . . . £4.00  
Scott Lens . . . . . £2.70  
Inc. VAT & P&P  
Also Gecel, Baruffaldi, Carrera, Raceway, Hydron

**GLOVES**  
Roger de Coster . . . . . £10.00  
Sizes 4-12 Inc. VAT & P&P

**RM 125 N 5/8" x 1/4" CONVERSION**  
Includes Front and Rear Sprockets **£14.50**  
Incl. VAT & P&P

**BOB HANNAH SHORTY LEVERS**  
Blades Yellow, Red or Black.  
The strongest available  
Fits Yam, Suz., Honda, Kwaka  
Only **£5.80 pair**. State model

## GIRLING GAS SHOCKS STILL AT UNBEATABLE PRICES

e.g. All complete Suspension Units. 11.8", 12.8", 13.00" and 13.4" in length.  
Soft, medium or hard damped fitted with single springs (e.g. Bultaco, Montesa, Ossa, Yamaha Soft Trials and 12mm bushes)  
**£32.50 per pair** INCLUDING VAT  
All complete suspension units 14.3 and 15.00" in length. Soft medium or hard damped, i.e. RM Suzukis, CCM's Maicos and most scramblers.  
Fitted with minor and major springs.  
**£38.00** Inc. VAT  
*(This includes TL125 14.3" soft damped trials).*

If in doubt when ordering your shock absorbers, please state bolt size for fittings, weight of rider, make and model of machine.  
Shock Absorbers built up to suit individual requirements at no extra cost.  
**FOR MORE ADVICE JUST GIVE US A RING!**  
+ £1.50 P.&P.

**Two New Lines**  
**WATERCOOLED CYLINDER HEADS** for YZ 125 and RM 125. Available all models, Complete with radiator, pipe, clips, etc. Stop that power loss through overheating and reduce seizures for £112.50  
Inc. VAT & P&P

TY 80cc Big Bore Conversion, 100cc . . . . . £22.00  
Inc. VAT & P&P

**KAWASAKI**  
KX 125 Heavy Duty Sprocket Conversions 5/8 x 1/4 Rear Sprocket and Front Sprocket £13.50 pair  
Inc. VAT & P&P  
1 length of Izumi ES.520 Chain . . . . . £13.50 P&P FREE

**BRAD'S BOOK**  
Motocross Techniques, Training and Tactics by Brad Lackey and Len Weed £7.50  
Price Inc. P&P

Honda TL replacement Exhaust Pipe, black only £7.50 Inc. VAT & P&P FREE  
**HONDA TL ALLOY SILENCER** £13.00 Incl. P&P — VAT

Preston Petty Trials Mudguards, Blue, yellow or silver. £8.75 Pair Inc. VAT P&P FREE

**SUZUKI RL 250N**  
£886 Inc. VAT & DEL. In stock now  
*Don't be left behind. This bike is a winner.*

**YAMAHA YZ 400E**  
£950 No hidden extras  
*NOT MANY LEFT — FIRST COME — FIRST SERVED*  
Credit Terms Available

**MOTORCYCLE TRIALS TECHNIQUE**  
By LEAVITT & WEED  
£5.95 inc. P&P

**KAWASAKI**  
We are getting a small batch of KX 250 A5's in about 10 days time.  
Definitely the last this year still at **£1200**

2 KX 80's, ex-stock . . . . . £595  
5 KX 125's ex-stock . . . . . £1158

**WOOL BOBBLE HATS,**  
Yam, Suz, Kaw.  
£2.30 inc. VAT & P&P

Duct Tape, King Size Roll, silver, black, yellow, red  
£5.75 Inc. VAT P&P FREE

Bike Racks £28.75  
Inc. VAT • £4 Carriage  
STATE SCHOOLBOY OR ADULT  
WHEN ORDERING

# MARGNOR

MOTOCROSS SUPPLIES

53 Fairlands Avenue, Fairlands Estate  
Worplesdon, near Guildford, Surrey  
GU3 3NB  
TEL. WORPLESDON (STD 048-631) 3782 & 3963

MAIL ORDER MAICO SPARES AND ACCESSORIES

PLEASE TICK THE BOX NEXT TO THE ITEMS YOU REQUIRE

- |                          |   |        |
|--------------------------|---|--------|
| <input type="checkbox"/> | Magura Dog Leg Clutch Lever, complete             | £5.54  |
| <input type="checkbox"/> | Magura Dog Leg Brake Lever, complete              | £5.54  |
| <input type="checkbox"/> | Magura Side-Pull Q/A Throttle                     | £8.52  |
| <input type="checkbox"/> | Doherty Side-Pull Q/A Throttle, c/w cable         | £9.79  |
| <input type="checkbox"/> | Clutch Cable                                      | £1.89  |
| <input type="checkbox"/> | Brake Cable                                       | £1.89  |
| <input type="checkbox"/> | Throttle Cable                                    | £1.89  |
| <input type="checkbox"/> | Izumi Rear Chain - 78/79 (108L)                   | £12.52 |
| <input type="checkbox"/> | Izumi Rear Chain - 76/77 (118L)                   | £13.09 |
| <input type="checkbox"/> | Front Sprocket (13T)                              | £4.29  |
| <input type="checkbox"/> | Rear Sprocket (56T)                               | £13.52 |
| <input type="checkbox"/> | Flick-Back Gear Lever                             | £7.15  |
| <input type="checkbox"/> | Foam Air Filter                                   | £3.37  |
| <input type="checkbox"/> | 400cc Primary Chain, 78/79                        | £8.92  |
| <input type="checkbox"/> | 400cc Primary Chain, 76/77                        | £8.95  |
| <input type="checkbox"/> | 250cc Primary Chain, 78/79                        | £5.98  |
| <input type="checkbox"/> | 250cc Primary Chain, 76/77                        | £5.98  |
| <input type="checkbox"/> | Motoplant Ignition Rotor Puller                   | £2.55  |
| <input type="checkbox"/> | Clutch Compressing Tool                           | £5.47  |
| <input type="checkbox"/> | Malcolm Smith Fork Gaiters                        | £4.78  |
| <input type="checkbox"/> | Metzeler Heavy Duty Rear Inner Tube (4.50 x 18")  | £5.89  |
| <input type="checkbox"/> | Metzeler Heavy Duty Front Inner Tube (3.00 x 21") | £5.17  |
| <input type="checkbox"/> | Bike Securing Straps for Trailers                 | £10.84 |
| <input type="checkbox"/> | Silver Supa-Tape (50mm wide x 10 metre Roll)      | £1.62  |
| <input type="checkbox"/> | Silver Supa-Tape (38mm wide x 50 metre Roll)      | £4.29  |
| <input type="checkbox"/> | De Coster MX Gloves, Small, Medium, Large         | £10.61 |
| <input type="checkbox"/> | Scott Goggles (59 type)                           | £10.82 |
| <input type="checkbox"/> | Scott Mask for above                              | £4.63  |
| <input type="checkbox"/> | Carrera Goggles (5098 type)                       | £5.30  |

Complete the Coupon Below and Send this Advert to us  
(All prices includes First Class Post and VAT)

I enclose £..... cheque/P.O. for payment of the items I have ticked above

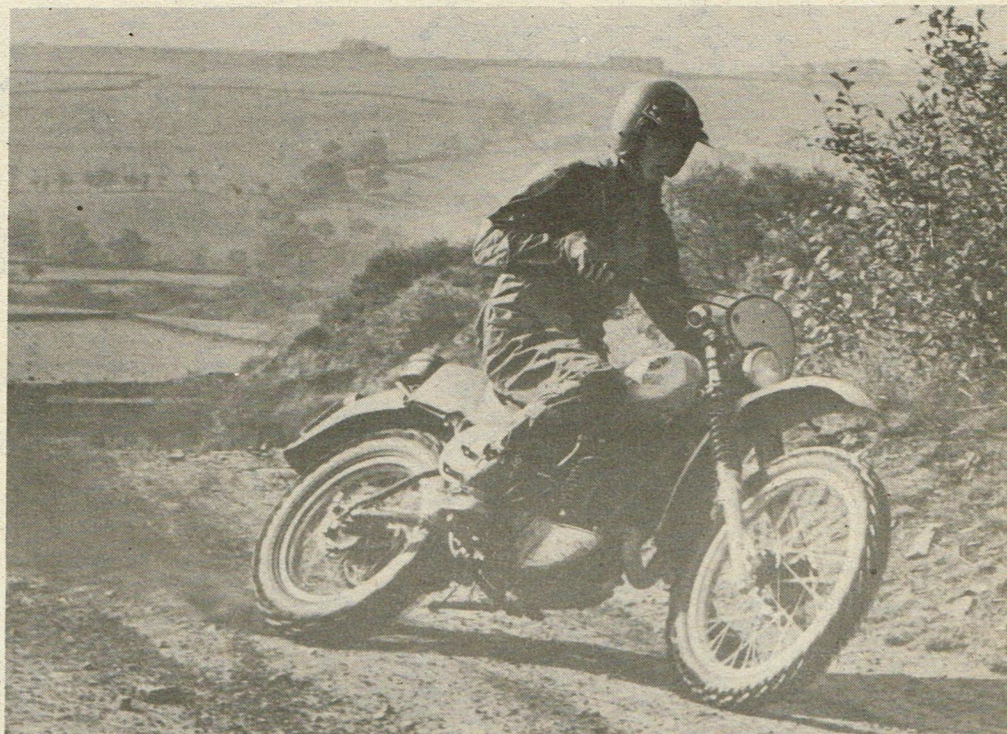
Name .....  
Address .....  
Tel. ....

# BETTER PLAN TO SPEND SOME CASH ON TYRES!

Continued from Previous page.

Both bikes share what at first glance appears to be a two year old YZ motocross frame. Closer examination reveals that everything has been designed with enduros in mind. The pressed steel backbone and twin down tubes hold the steering head at 31 degrees, 30 minutes, a position that ensures high speed stability at the expense of nadsery manoeuvrability. Add to that 142mm of trail and you can see that Yamaha intended this as a stable machine in a straight line and that is pretty close to reality.

On smooth tracks both machines - sharing identical frames - motor quite happily apart from a pair of atrocious Bridgestone tyres, which give the feeling of a puncture. A good set of tyres would also give a welcome increase in traction when the going gets slippery, so plan on spending a few pounds here. The better tyres may also highlight a shortcoming in the suspension area. Even in standard trim it is quite easy to find the limits of the monoshock rear end and the Yamaha forks. These days, 185mm of rear travel and 215mm at the front seem almost archaic but enduro machines unlike motocrossers must present a comfortable perch from which a rider can, on occasion, touch the ground. By reducing wheel travel Yamaha have achieved



Marginal tyres will loose traction easily. A good set of European tyres would greatly improve the machines.

## T+MIX News BIKE TEST

this situation and many people will never notice the lack of travel, but quick riders hell bent on setting fastest time may want to bolt on some more suspension travel.

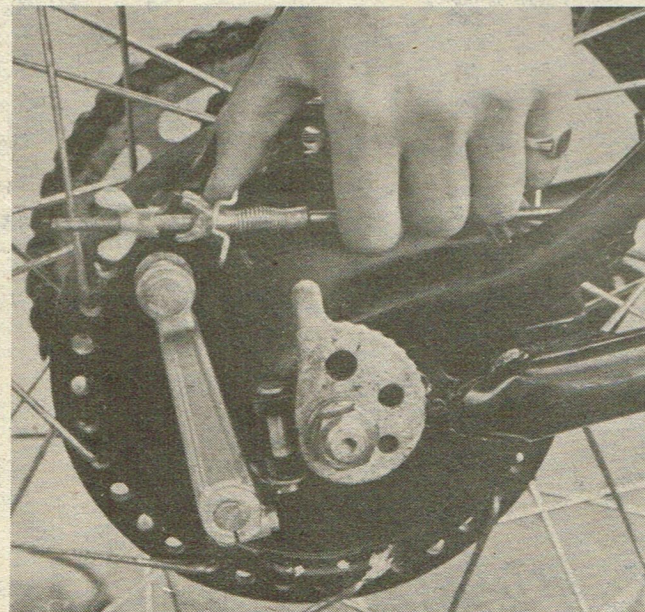
Comfort is a high point on both the IT's with a very thick seat cushioning the rider. The foam tends to compress after a long day in the saddle with the base sometimes intruding when rider and machine come together in the inevitable heavy landing with feet off the footrests. The footrests themselves feel a little low and far forward making the transition from sitting to standing difficult, encouraging a permanent sitting pose on the soft seat.

In the tighter going that abounds in the Welsh Forests, the Yamaha is a little unwieldy, in part because of the steering geometry, but equally because of a high centre of gravity. The monoshock arrangement places the damper - in the enduro it is steel and not aluminium - high under the massive plastic petrol tank. With almost three gallons of fuel and a steel damper

Continued Overleaf



Inside the nice little tool bag are padding and straps to prevent tools rattling round out on the trail.



Slacken the axle nut, unhook the brake rod and remove the pins from the end of the arm to remove the wheel.



The business like back end of the IT has a QD wheel, handy tool bag and a noisy silencer.



U.K. DISTRIBUTORS FOR



The Best Boots  
**AXO**

MOTO-X TRIALS  
ENDURO

Boots Leathers Gloves  
£49.50 £42 £11

Unleathers £42  
INC. VAT & P&P

Trade Enquiries Welcome

ATC  
HIGH STREET

Little Humby, Grantham, Lincs. Tel. 047-685 318

PLUS: BIKE RACKS ..... £42 (QD) inc. VAT & P&P  
YAMAHA STANDS ..... £4.50 inc. VAT & P&P

## SPECIAL BARGAIN TIME

at

### E.R.M. MOTOSPORT

102 Derby Street • Bolton • Lancs  
Telephone: 0204 29138

#### ★ SPECIAL OFFERS! ★

NEW HONDA CR 125 RZ ..... £945  
inc. VAT

NEW COTTON EMX 250 ..... £1150  
inc. VAT

NEW VILLA 250 ..... £995  
inc. VAT

#### SECONDHAND MACHINES

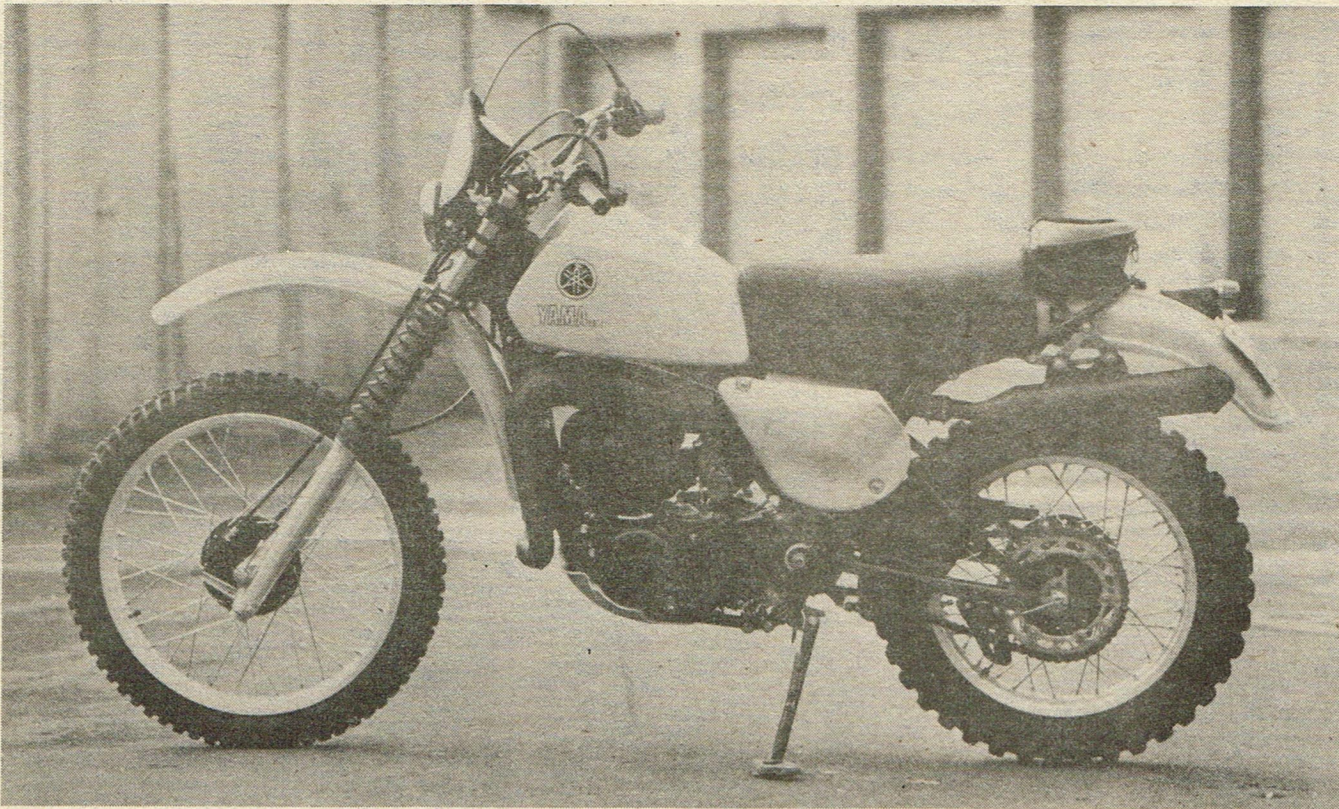
- |                      |      |
|----------------------|------|
| 1979 VILLA 250       | £785 |
| 1979 KAWASAKI A5 125 | £795 |
| 1979 SUZUKI RMN 125  | £775 |
| 1978 KAWASAKI A4 250 | £550 |
| 1978 KCD 125         | £295 |
| AJS 410              | £245 |
| GREEVES 380          | £475 |
| BULTACO 360          | £255 |

NOW IN STOCK: M. ROBERT RO-BOOTS £42 pair - Fantastic Value. Sizes 6-10½

GECÉL 5732 FACE MASK, complete with spare lens and Rip-Offs - £7.85 inc P&P  
(Red, Black, White)

BERTOLANI HAND PROTECTORS - £5.50 inc. P&P  
SCORPION CROSS HELMETS, sizes 0-4 - £29.30 inc. P&P  
Stockists of STILMOTOR, BERTOLANI, M. ROBERT and PRESTON PETTY MUDGUARDS.

Plus Our Large Selection of Oils and Motocross Gear



The ITs have one of the thickest seats in the business. Soft padding lets you sink into a low driving position.

Continued from Previous page.

mounted high the bike does feel noticeably top heavy in slow going. The 400 feels even heavier than the 250 although the scales say there is only a four pound difference. Both bikes are porky with the 400 bending the needle down to 273lbs. net, a large lump that takes some controlling in tight going.

With only a 34 inch seat height, and a soft seat that compresses easily the rider will have no difficulty reaching the ground and his legs will be kept busy propping up the machine in the woods. He may also want to keep his feet off the footrests to prevent broken toes. The rests, like the ample aluminium bash plate are quite low and rocks and logs seem

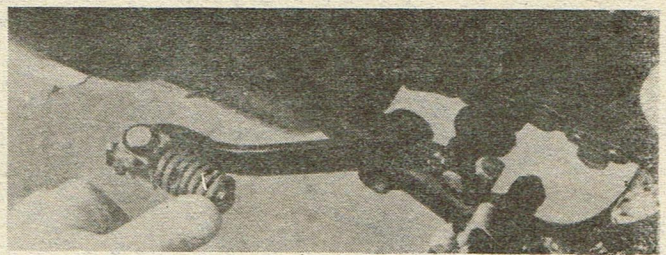
magnetically attracted to them. Deep muddy slots could prove a little frustrating as things snag up easily.

When you do get bogged down however, you can rely on either motor to pull you clear. The 250 with its mild 7.8:1 compression and gentle porting chugs along quite happily at low speed, assisted by heavy flywheels that make stalling difficult. If fast progress is needed the machine will need a good handful of throttle before things really start happening. It revs quite merrily considering the flywheel inertia present. On fast stretches the motor screams along with its surprisingly noisy exhaust system keeping you aware of the speed.

To keep things boiling the 250 motor has six ratios which all tend toward the high speed stuff that the frame also prefers. First gear at 2.714:1 is quite tall and the clutch comes in for quite a bit of use in the nadgeries. On one steep uphill moorland section covered with large hummocks the bike would barely pull along and clutch slipping was the only way to ensure quick progress. However, on the fast trails and tarmac roads that connect the nadgerly bits the smaller Yamaha really motors. Top gear is a handy overdrive that ensures seventy mile an hour cruising on level roads.

In contrast to the 250, the 400 is a monster motor that is more than capable of outrunning the cycle parts. The 85 x 70mm dimensions produce a mountain of torque that makes it almost a handful but thanks to very heavy flywheels the response is slow and controllable. What this power does however, is show up the rear tyre which spins at the slightest hint of throttle even on a damp road where our test machine provided a few hairy moments.

Just like the 250, the 400 has quite tall gearing and trials type going may need some clutch work, not because the motor has insufficient bottom end power, but simply because the motor cannot keep



A folding gear lever should prevent internal damage in the event of a tumble or contact with rocks.

running out of power because the big IT will just keep chugging up any hill you confront it with.

Certainly the motors are outstanding features of both models but it is in attention to detail that Yamaha have excelled. Japanese bikes have always been well finished with all the convenience features that others offer as optional extras. The Yamaha almost goes to extremes to offer every convenience the enduro or trail rider will need.

The rear wheel for instance is the quickest QD fitting in the motorcycle industry. Simply slacken the axle, pull out two pins in the open ended swinging arm and the wheel is out. The brake rod is also QD and a little hoop on the swinging arm holds it out of

spinning at very low revs. First gear attacks on hills will often result in a deep trench and little progress as the tyre spins madly. Second and even third gear - there are five all together - are better bets for traction. Do not worry about stalling the motor or

### GREEVES

#### SPARES DISTRIBUTORS

Trade and Retail

Villiers Single Spares

POSTAL SERVICE

RING KEITH  
HOLMFIRTH  
3665



STOCKIST

### TERRY SILVESTER

Springlane Mill,  
Woodhead Road,  
Holmfirth

## HONDA ★ SUZUKI ★ YAMAHA ITALJET ★ TRIALS & MOTOCROSS BIKES

# ★ SUPER DISCOUNTS ★

YAMAHA	LIST PRICE	OUR PRICE	SUZUKI	LIST PRICE	OUR PRICE
TY 80 Trials	£380	£339	RM 50N Motocross	£580	£549
TY 175 Trials	£740	£659	RM 80N MX, ex stock	£660	£609
TY 250E Trials	£820	£699	RM 100C Motocross	£749	£699
YZ 80F Motocross	£530	£469	RM 100N MX ex stock	£874	£799
YZ 100F Motocross	£830	£699	RM 125N MX ex stock	£1063	£989
YZ 125F Motocross	£1040	£899	RM 250N Motocross	£1357	£1259
YZ 250F Motocross	£1300	£1149	RM 400N MX ex stock	£1490	£1399
YZ 400F Motocross	£1440	£1259	RL 250Y Trials	£958	£899
HL 500 Aberg	£1810	£1599	RL 325Y Trials	£1032	£969

YZ 125 F, YZ 250 F, YZ 400 F  
NOW INCLUDE SPARES KIT

YAMAHA TRAIL ROAD BIKES	OUR PRICE	SUZUKI TRAIL ROAD BIKES	LIST PRICE	OUR PRICE
TY 50M	£385	TS 50K	£385	£349
DT 50M	£399	TS 100 ERN	£527	£489
DT 100	£540	TS 125 ERN	£585	£529
DT 125	£599	TS 100T	£465	£429
DT 175 MX	£689	TS 125 T2	£499	£439
DT 250 MX	£875	TS 185	£690	£629
XT 500	£1199	TS 185 ERN	£634	£569
		SP 370	£798	£685

ITALJET Fun Bikes	OUR PRICE	HONDA	LIST PRICE	OUR PRICE
MM5B Auto, 8" wheels	£260	XR 80 Motocross	£506	£459
M5C Auto, 10" wheels	£275	CR 125 Mk.2 Motocross	£744	£679
JC5C Auto, 12" wheels	£305	CR 125 Z	£1064	£925
Jun. Cross KS50 4-speed	£428	CR 250Z '79 model MX	£1276	£1109
Prof.PR50 6-speed	£619			

PUCH	OUR PRICE	HONDA TRAIL ROAD BIKES	OUR PRICE
Magnum 50 MX	£296	XL 100S	£574
		XL 125S	£638
		XL 185S	£695
		XL 250S	£899
		XR 250	£1144
		XR 500	£1278
		XL 500S	£1170

QUALITY USED MACHINES		HONDA, SUZUKI, YAMAHA	
1979 Italjet, 12" wheels	£219	Makers D/Charges & Props Extra	
1977 Kawasaki 250 Trials	£399		
1977 Suzuki 250 Trials	£529		
Italjet 100 4 speed	£299		

CREDIT TERMS: 15% Deposit. Balance up to 36 months.

261-265 BARKING ROAD  
EAST HAM,  
LONDON E.6  
Phone 01-471 6285  
01-471 0923

W&A  
EASTHAM TUBE

OPEN: 9 a.m. to 7 p.m.  
Mon., Tues., Wed., Fri.  
Saturday 9 a.m. to 6 p.m.

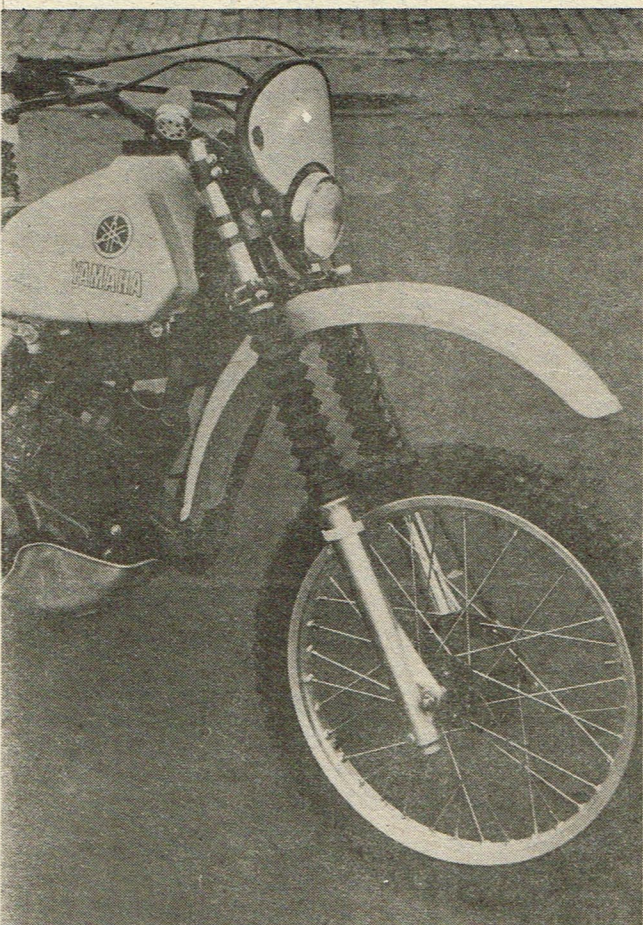
HONDA ★ YAMAHA ★ SUZUKI ★ ITALJET

# EDDY GRIMSTEAD GROUP

ESTABLISHED 1908



A landing from this height will usually soak up all the available travel. More travel would also mean more seat height.



Front forks work well but could do with a bit more travel. DID rims stand up well to all the abuse.

the way while the wheel is out. Above the nice wide plastic mudguard is a very handy tool bag with easy to open zips and straps to stop tools flying around while riding. Both the foot pedals have pivoting ends to keep them out of trouble in ruts and rocks and if one of those rocks flies through the air it will not smash the headlight because of a thick plastic cover.

Possibly the only omission as far as ac-

sories go is a centre stand. There is the motocross style side stand but that soon sinks into anything and the bike falls onto its folding pedals. Wheel changing may be simple but only with the bike lying on its side.

This may be a minor annoyance but not something that is going to stop a lot of riders from buying the Yamaha for trail use or serious enduros. Sure, both bikes are

a bit on the heavy side, especially top heavy, and the suspension is a little on the short side. But for those wanting the ultimate there are a lot of very expensive European machines that fit the bill perfectly. The Yamaha is not aimed at this market, they want the vast hordes of clubmen looking for a competitive machine at a reasonable price.

It will certainly be nice to see a little splash of blue among the yellow in the Parc Ferme. If Yamaha do things right it may just be a little more than a splash of blue that we see, and it will be pleasant to have an alternative to the alternative.

Side by side there is little difference between the two. The larger 400 motor is the only give away. A massive aluminium sump shield protects the twin down tube frame and engine cases from damage.

## SPECIFICATION Yamaha IT 250/400

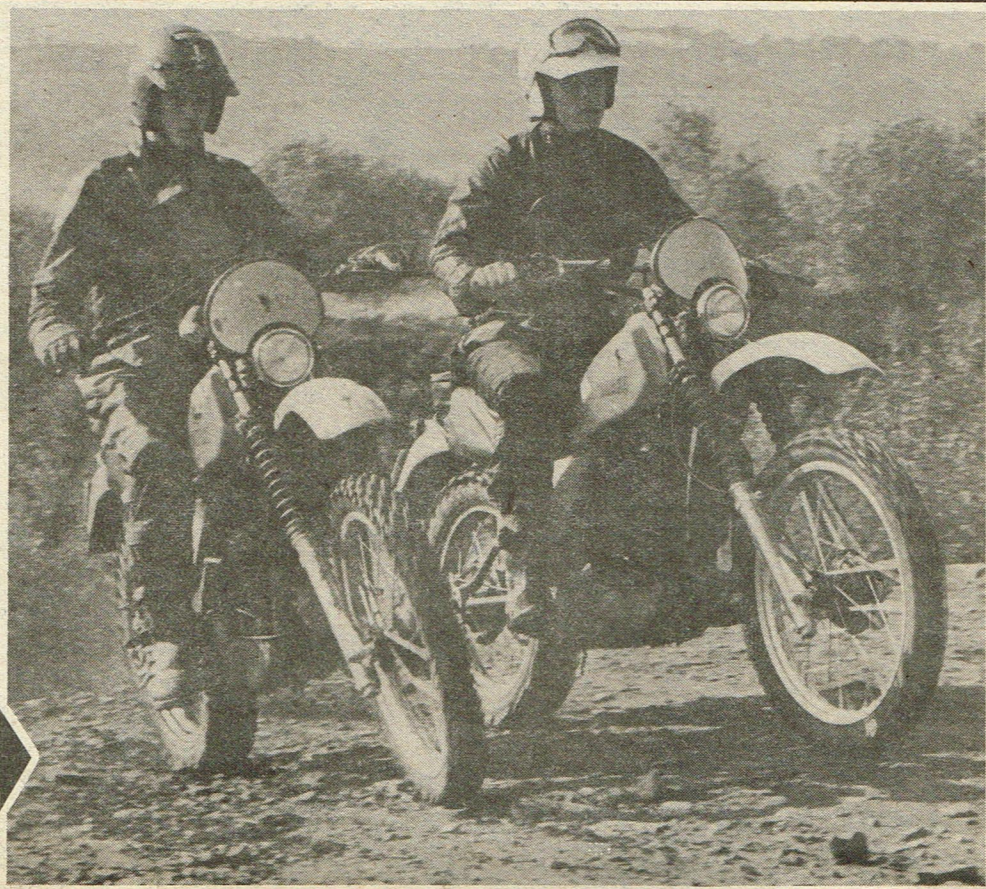
**ENGINE:**  
Bore & Stroke: 70 x 64mm/  
85 x 70mm  
Capacity: 246cc/397cc  
Compression Ratio: 7.8:1/7.6:1  
Carburettor: Mikuni VM36/  
VM38  
Ignition: Mitsubishi CDI  
Clutch: Multi plate wet  
Primary Drive: Helical Gear  
(2.666:1)

**GEARBOX RATIOS:**  
1 2.714:1/2.538:1  
2 2.067:1/1.706:1  
3 1.600:1/1.300:1  
4 1.261:1/1.000:1  
5 1.050:1/0.769:1  
6 0.971:1

**DIMENSIONS:**  
Overall Length: 2220mm  
Overall width: 910mm  
Overall height: 1145mm  
Wheelbase: 1430mm  
Ground Clearance: 240mm  
Seat Height: 870mm  
Net Weight: 122Kg/124Kg

**SUSPENSION:**  
Front: 215mm  
Rear: 185mm  
Fork Rake and Trail: 31°  
142mm

**IMPORTERS:**  
Mitsui Machinery  
Sales Ltd., Oakcroft Road,  
Chessington, Surrey.



WE LOOK FORWARD TO SEEING YOU AT DIRT BIKE 80. STANDS G11 & G30

**F o B  
RACING**

# FOWLERS of BRISTOL

**F o B  
RACING**



Now In Stock  
**THE NEW  
RED BULLET**



**NOVEMBER  
SALE**  
★ **ONE ONLY  
440 LEFT**  
*Give us a ring  
for quote*

List price	Our price
CR 125..... £1079	<b>£950</b>
CR 250..... £1292	<b>£1150</b>

Taking orders for the HONDA TL 200 TRIALS BIKE. price £1080 inc. VAT.

**ALL PRICES QUOTED  
ARE 'ALL IN'  
WITH  
NO HIDDEN EXTRAS**

Taking orders now for the new Range of Suzuki and Yamaha Motocross Machines  
Delivery December



### KRAMER

Taking Orders for the 250 and 410

**PRICE ON APPLICATION**

### SUZUKI TRIALS & MOTOCROSS

	List Price	Our Price
RL 250 N.....	£885	<b>£817</b>
RM 50 N.....	£595	<b>£566</b>
RM 80 N.....	£676	<b>£601</b>
RM 100 N.....	£889	<b>£800</b>
RM 250 N....	£1368	<b>£1271</b>
RM 400 N....	£1505	<b>£1350</b>



### YAMAHA TRIALS

List Price	Our Price
TY 80.....	£396 <b>£370</b>
TY 175.....	£781 <b>£699</b>
TY 250.....	£868 <b>£756</b>

**1978 YAMAHA 400E**  
£900 Plus VAT

Taking orders for the entire range of YAMAHA TRIALS and MOTOCROSS 1980 Models

### MOTOCROSS

	List Price	Our Price
YZ 80F.....	£546	<b>£499</b>
YZ 100F.....	£846	<b>£745</b>
YZ 125F.....	£1050	<b>£950</b>
YZ 400F.....	£1458	<b>£1250</b>

125.....	£1267
250.....	£1300
500.....	£2012
580.....	£2012

**WE ARE STOCKISTS FOR:**  
BEL RAY OIL • CASTROL PRODUCTS  
FOX SHOX • TT LEATHERS  
HALVARSSON LEATHERS • D.G.  
EQUIPMENT • STILMOTOR PRODUCTS  
• DID CHAIN  
DISTRIBUTORS—GIRLING SHOCKS  
S & W SHOCKS

### SECONDHAND MACHINES

1978 SUZUKI RM 100C . £550	1977 MAICO 250..... £575
1979 CCM 500 ex Bob Hart	1978 CCM 500 ..... £775
..... £1500	1977 CCM 500 ..... £825
1977 BULTACO 370... £425	1977 SUZUKI RM 100B. £450
1978 YAMAHA YZ 125E	123cc MONTESA..... £325
..... £625	1978 CCM..... £795
1978 MAICO 400..... £725	1976 MAICO 400..... £450
1978 SUZUKI RM 400L	1973 MAICO ..... £350
ex Bill Gaiter £850	1976 MAICO 400..... £525
1977 HUSKY 125..... £395	1976 HONDA 125 ..... £350
HONDA CR 125... £350	125 KAWASAKI ..... £325
1978 YAMAHA 125E... £595	ITALJET 80..... £325
1977 YAMAHA 125D .. £495	ASPES 80..... £275
1978 SUZUKI 125C.... £595	

**FOWLERS OF BRISTOL LTD.**

**96-100 Grosvenor Road, Bristol BS2 8XL**

Telephone 0272 551538 ★ 100 yards from end of M32 City Lane