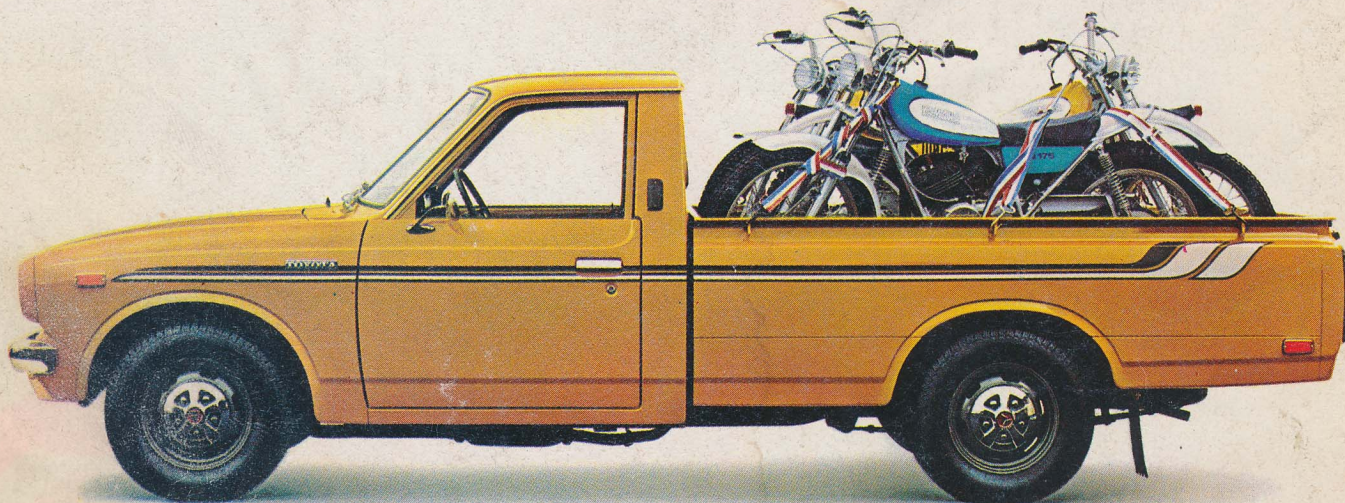
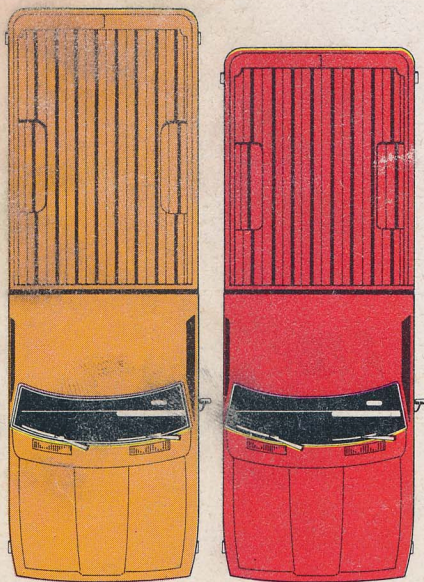


INTRODUCING TOYOTA'S SR-5 LONG BED SPORT TRUCK.



ONE BIKE BIGGER.



15.9" LONGER.

Than our standard pickups. So you can load up on three full size dirt bikes instead of just two. Or haul off 1100 pounds and 7-feet-plus of just about anything else.



1 GEAR LONGER.

5-speed overdrive transmission. So, you can be pretty picky about the revs you want from our big 2.2 liter cross-flow engine. From the torque of a 3.287 first gear up to a money-saving 0.853 fifth gear.

To go with that sporting 5-speed overdrive transmission you get wide radial tires, Hi-back bucket seats, an AM radio and a roomy cab with wall-to-wall carpeting. All at no extra cost.

6 MPG LONGER.

Last year, our pickups were rated at 27 highway mpg and 19 city mpg in EPA tests. This year the SR-5 Long Bed Sport Truck was rated even better—33 highway mpg and 20 city mpg in 1976 EPA tests. *These mileage figures are estimates. The actual mileage you get will vary depending on your driving habits and your car's condition and equipment.*

There's a full line of Toyota Half-Tons to choose from. Our standard length Half-Ton. Our standard length SR-5 Sport Truck. Our Long Bed. And the new SR-5 Long Bed Sport Truck.



TOYOTA

YOU ASKED FOR IT. YOU GOT IT.