

# SUZUKI RM125X: MAGIC SHOCK

# DIRT BIKE

JULY 1981  
\$1.50 UK65P

**YAMAHA YZ250H:**  
IS THERE LIFE AFTER MONO?

**EASTERN KNUCKLE  
BUSTER ENDURO:**  
FORKED RIVER  
NATIONAL



**THREE  
WHEEL  
THUNDER:**  
HONDA  
ATC250R



**HONDA  
CR80:**  
MAXI  
MINI







SUZUKI RM125X



HONDA ATC 250R



SUZUKI PE175



FORKED RIVER NATIONAL ENDURO

On the cover: Steve Schmitz explodes the YZ250H out of a sandy berm at Indian Dunes; and Dirk Vandenberg does the same thing at Dumont Dunes, on the ATC 250R. Both photos by Paul Clipper, who's still shaking the sand out of his shoes.

## TESTS

- 18 YAMAHA YZ250H  
Good for another year
- 28 SUZUKI PE175X  
More improvements for the Pure Enduro
- 34 HONDA CR80R  
Burnouts on the Mighty Mini
- 42 HONDA ATC 250R  
A three-wheeled CR, no kidding
- 50 SUZUKI RM125X  
Float like a butterfly . . .

## COMPETITION

- 24 FORKED RIVER MOUNTAIN  
NATIONAL ENDURO  
Mountains? In South Jersey?
- 46 VIEWFINDERS GRAND PRIX  
The Great Dust Bowl of '81

## TECHNICAL

- 36 CABLE ROUTING  
Searching out new directions
- 61 EASY PIPE REPAIR  
Cutting up in the DB garage

## FEATURES

- 63 LEGAL UPDATE  
Keeping tabs on the Cold War

## DEPARTMENTS

- |  |   |
|--|---|
| 4 FROM THE SADDLE<br>Mister Danger               | 12 RIDERS WRITE<br>We get requests                  |
| 6 LAST OVER<br>They don't grow on trees          | 16 NEW PRODUCTS<br>Parts and supplies               |
| 8 BITS AND PIECES<br><i>DB gossip column</i>     | 74 CRASH AND BURN<br>We'll never leave it out again |
| 10 MISTER KNOW-IT-ALL<br>Free public humiliation |   |

DIRT BIKE Magazine, ISSN 0364-1546 (Jul '81) is published monthly by Daisy/Hi-Torque Publishing Co., Inc., with editorial offices at 16200 Ventura Blvd., Encino, California 91436. Subscriptions \$12.98 for 12 issues (one year). Foreign subscriptions add \$5 per year and Canada \$4 per year for additional postage. Copyright © 1981 by Daisy/Hi-Torque Publishing Co., Inc. All rights reserved. Nothing in this magazine may be reprinted in whole or in part without the express permission of the publisher. CONTRIBUTORS: Photographic submissions must be 5x7 or 8x10 glossy black and white, or 35mm and larger color slides. Please mark each photo with owner's name and address. Manuscripts should be typewritten. Unsolicited contributors must be accompanied by a stamped, self-addressed envelope. Unless special arrangements are made in advance, all published material becomes the sole property of Daisy/Hi-Torque Publishing Co., Inc. The publisher does not assume responsibility for unsolicited material Second class postage paid at Van Nuys, California 91408, and at additional offices. DIRT BIKE, P.O. Box 317, Encino, California 91316.







# NOT JUST ANOTHER YELLOW TANK

## SUZUKI PE175X

A host of minor changes add up to a major improvement

The hot word on this year's PE175 was no word at all. From all of our casual inquiries, we got the same answer: The PE would have a few new details on it, but no major changes in the engine or suspension. If there was anything radically wrong with the 1980 PE, this would have been upsetting news; but, as a matter of fact, we liked last year's bike quite a bit. So, that's great; no major changes; no great excitement. We would wait and then test it later on in the year.

Okay, fine.

Soon, the time came to test the new PE. We really paid very little attention to it because, after all, it was the same bike, right?

Eventually, we took it out for its first ride and gave it the once-over as we unloaded it from the truck. The graphics were different, and, what's this? There's no skid plate this year! Instead, there is a pair of Six Days-type bash bars welded to the lower frame tubes. One of our test riders sidled up, and we asked him for any comments. He said the pipe looked like a bathysphere. Hmmm. He also said the silencer looked like a bathysphere.

Obviously, what we had before us was a test rider with a deep-sea exploration fetish.

References to underwater sports aside, we gassed up and went for a break-in ride. First off, we noticed the bars were weird. They seemed to be pulled back too far and didn't allow the rider to sit as forward as he should. Personal gripe. Some people might like the bars.

We can't think of anyone who'd like the seat, though. It's the same seat as last year and it still has a couple of problems. For one thing, it's shape is too square. When you're sitting down (and you only notice the seat when you're sitting down. Odd, isn't it?), the edges of the seat can be felt pushing on the inside of your thighs.

On a long ride this can become quite uncomfortable. Also, for long-legged riders, the seat is too short. Some of our taller testers suffered taillight bruises on the butt after a trip through the whoopdies. A couple more inches in length and some rounded edges would improve things a bunch.

Neither the shift lever nor the rear brake pedal have folding tips. This should come as no surprise, as we've

been telling you this for two years. Suzuki must have a warehouse full of those shift levers, and maybe once they use them up, we'll get something new.

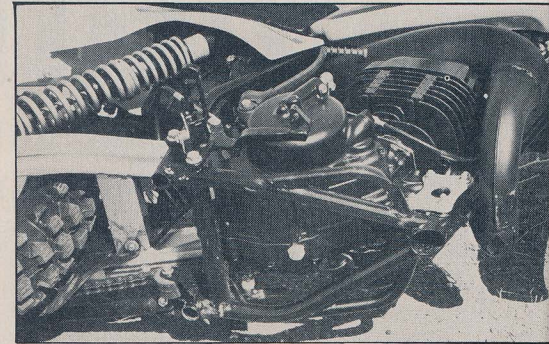
We spent a little while tooling around, getting the feel of things and letting the motor loosen up a little; then came back, gassed up, and went for a real ride.

It didn't take long until we started

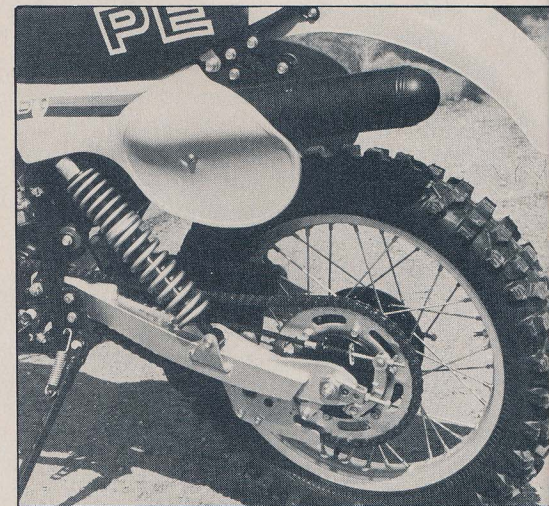




# SUZUKI PE175X



*Rather than using a skid plate this year, the PE has Six Days-type bash bars. The underside of the cases could be better protected.*

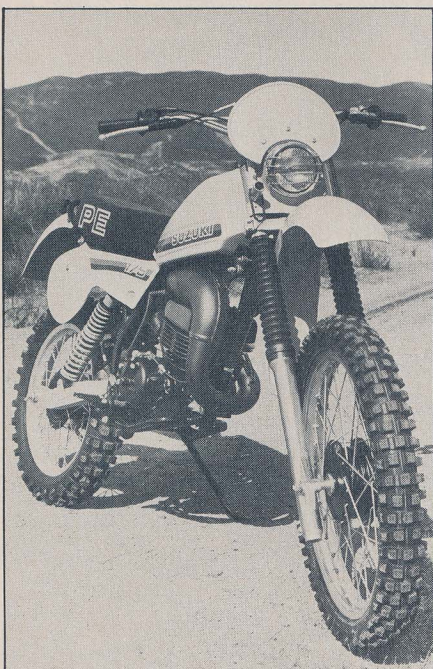


*Rear wheel is the same quick-change item as last year's; a nice touch. Shocks are okay, but springing is a little stiff.*

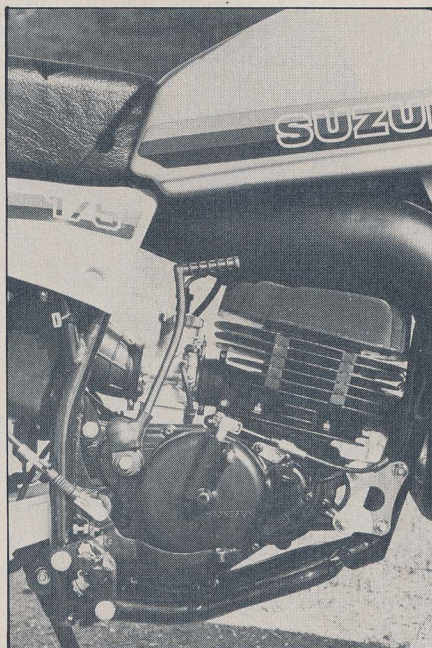
Dave Riley

noticing odd things. The power delivery felt good on the PE. Actually, it felt good on last year's bike, but the odd part was that this bike felt better. A whole lot better; and that's unusual for an engine that's supposed to be unchanged. Granted, it'd been a long time since we rode an '80 175, but we were having less trouble on steep hills, and the bike seemed to make more power all the way up to redline. Hmm. More torque and better top end. What's the story here?

Later on, we made a phone call to U.S. Suzuki and found out a number of interesting things. Yes, there were a few changes inside the motor. Most notable were lowering the exhaust port one millimeter and the use of a thicker head gasket to lower the compression ratio a tad. Also, the pipe has been changed internally and the muffler redesigned for better breathing. This allowed the jetting to be leaned out slightly; what we wound up with was a



*Front forks were a little harsh when new; tires could be better.*



*The '81 motor is not the same as last year's. Improved porting has resulted in a much better powerband.*



powerband even easier to live with than last year's. Not too shabby for an unchanged machine.

At the same time, we found out the rims are a new type, reputed to be about 15-percent stronger than the old ones; and the spokes had been beefed up one size. It never hurts to strengthen up the wheels.

We also had the bash bars pointed out to us again and, although they look like they'll do a good job of protecting the side cases, the underside of the engine is left completely unprotected. This is not good. We returned last year's PE with a big dent right in the middle of the skid plate. We feel that if Suzuki wanted to go with bars this year, they should have run one more along the bottom, centered on the engine. It would have made a lot more sense.

Back to the riding. We had no major complaints on the suspension of last year's bike, and near as we can tell, it's the same for 1981. The forks are air adjustable and deliver 9.8 inches of decent travel. There is nothing awe-inspiring about these forks—they soak up nasty terrain without feeling harsh, but then they're not what you would call plush, either. Just good, average forks; no bad habits, no surprises.

The rear shocks seem to be tuned right in to the action of the forks, although a few of the testers complained that they may be a bit stiff. Our bike is still relatively new, and it'll take a little more time for the shocks to get completely broken in, but it's always better to have a suspension set up on the firm side, rather than too soft.

On the days we rode the PE, there was good traction and cool weather, and the PE couldn't have been happier. The bike handled perfectly in both the wet and dry stuff and was very easy to thread through tight trails at moderately high speeds. Because of the wide powerband, the 175 is also easy to wrestle around obstacles at a crawl; like picking your way through rocky stream beds and such.

The only handling problem we had came when we were braking hard into a choppy turn. While the rear brake was very difficult to lock up, we did notice quite a bit of hopping around in the stutter-bumps. The hopping does not render the PE uncontrollable, just uncomfortable. We expect it to be-

# HI-POINT GRAND PRIX M-X GLOVES

Two Great Styles in all Colors & Sizes with or without Padded Palms



## ALL LEATHER

Made from the finest Lambskin. Contoured to fit the grip. All sizes including kids. Made in Finland.



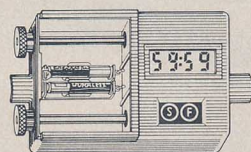
## NYLON/LEATHER

Made from Lambskin with nylon on the back of the hand and a knit cuff. All sizes, contoured. Made in Finland.

Try a Pair at your Hi-Point Dealer and Get the Fit you Need

HI-POINT RACING PRODUCTS  
Penton Imports Company

3709 W. Erie Ave., Lorain, OH 44053  
9604 Oates Dr., Sacramento, CA 95827



COMBO \$109.95  
 CLOCK only \$99.95  
shipping included, retail only

# COUNTDOWN

## YOUR ONE-STOP ENDURO SHOP JULY IS HONDA ACCESSORY MONTH

- For '78-'80 XR's and XL's 185, 200, 250, 500
- Roller chain tensioner XR/250/500 ..... \$21.95
  - Case saver, XR/XL 250/500 ..... 10.95
  - Nylon rear tool bag ..... 19.50
  - Seat cover, XR 250/500 ..... 17.95
  - Plastic gas tanks ..... 53.50
    - XR/XL 185/200 2 3/4 gallon
    - XR/XL 250/500 2 3/4 gallon
    - XR/XL 250/500 3 3/4 gallon
  - Leather tank tool bag ..... 29.95
  - holds time card on top
    - Chromoly bars, red or gold ..... 23.95
    - Red Hi-Point hand guards ..... 13.95
    - Magura straight-pull and cable ..... 38.45
    - Super Trapp 250/500 (4-inch model) ..... 79.95
    - Super Trapp 185/200 (3-inch model) ..... 57.50
    - O'ring chain 520x108 ..... 60.25
    - Red Dot 450x18 ..... 51.25
    - Dunlop 460x15 ..... 59.95
    - Cheng Shin 755 530x17 ..... 45.38
    - Cheng Shin 759 400x18 ..... 36.63
    - Yokohama 300x23 ..... 45.94
    - Sun rim and spokes, 21 inch ..... 79.95
    - Terry fork kit ..... 44.95
    - Air caps 185/200 ..... 15.95
    - Air caps 250/500 ..... 21.95
    - Works triple-rate shocks ..... 124.95
    - XR/XL 185/200 aluminum swingarm ..... 189.95
    - XR/XL 500 banana swingarm ..... \$189.95

- For the new '81 XR's 500, 250 & 200 R
- Ball brg chain roller For R ..... \$8.60
  - Case saver, 250/500 ..... 10.95
  - Nylon rear tool bag ..... 19.50
  - Leather tank tool bag ..... 29.95
  - holds time card on top
    - Chromoly bars, red or gold ..... 23.95
    - Red Hi-Point hand guards ..... 13.95
    - Magura straight-pull and cable ..... 38.45
    - Super Trapp (new 4-inch model) ..... 79.95
    - O'ring chain 520x108 ..... 60.25
    - Dunlop K180 510x17 ..... 64.95
    - Cheng Shin C755 530x17 ..... 47.65
    - Cheng Shin C759 400x18 ..... 36.63
    - Red Dot 300x21 ..... 43.45
    - Chengshin C755 300x21 ..... 26.15
    - Air caps XR200 ..... 21.95
    - Terry fork kit ..... 44.95
    - Pro-Link shock mod ..... 129.95
    - Hi-Point gloves ..... 29.95
    - leather with nylon back, knit cuff;
      - blu/vel, r/w/b; S, M, L, XL
      - Hi-Point nylon jersey ..... 15.95
      - Suz, Yam, Hon, Kaw, Mai, Hus; S, M, L, XL
      - Malcolm Smith enduro jacket ..... 74.95
      - S, M, L, XL; blu/vel, blu, red, navy
      - Malcolm Smith boots ..... \$119.95
      - MX or enduro sole; one-half to one size smaller than shoe. Size

Circle size and color desired. Decal and color catalog of enduro and trail riding products only \$2.00. Free freight on orders over \$50.00 (four pounds, limit); if under, add \$3.00.

NAME \_\_\_\_\_ STREET \_\_\_\_\_  
CITY STATE \_\_\_\_\_ ZIP CODE \_\_\_\_\_  
PHONE ( ) \_\_\_\_\_ AMT \$ \_\_\_\_\_ MAKE MODEL YEAR \_\_\_\_\_

COUNTDOWN  
22102 Covello St. Ste. D  
Canoga Park, CA 91303 (213) 348-8381

AAProducts



**THE LOWEST PRICES!!  
THE HIGHEST QUALITY!!  
THE FASTEST SERVICE!!**

**NYLON MX PANTS.** Constructed of heavy weight nylon, these rugged pants feature thick hip pads and zippered pockets at the knees to hold closed-cell foam knee protectors. The seat and inside the legs get extra protection from a heavy vinyl pad sewn to the inseam. Other features include a zippered front with a snap closure and belt, and zippered ankle openings. Available in blue, red or black each with yellow trim. Sizes 22-38 . . . **54.95**



**MOTOCROSS JERSEYS.** Ride in style with these rugged Motocross Jerseys. Choose your favorite manufacturer's name and team colors. The 50% cotton-50% polyester blend provides the soft comfort of cotton and the durable strength of polyester . . . more comfortable than vented nylon. The long, jersey-style sleeves mean additional warmth. Bultaco, Can Am, Hodaka, Honda, Husqvarna, Kawasaki, KTM, Maico, Ossa, Suzuki, Yamaha. Specify size: XS (child's), S, M, L, XL . . . **12.95**



**BELL MOTO III.** The new Bell Moto III. Tested and developed by champions. The new Moto III sets new standards for safety and comfort. Features: smaller, lighter fiberglass shell for better balance, contoured to protect nose, mouth and chin (eliminates need for face masks), slotted air vents for increased air supply. The first integral dust filter. Fade resistant finish. Five snap visor. Distinctive Bell graphics. Sizes 6 3/4 thru 7 3/4. Red, Yellow, Blue or White . . . **89.95**



**PROLINE BOOTS.** These heavy leather motorcycle boots feature a one-piece injected sole that is bonded and stitched to the uppers. An extra leather pad is sewn over the toe to prevent excessive wear from shifting. High impact shin plate for added protection. They come with smooth sole and Enduro sole. Available in full sizes 6 through 12 . . . **99.95**



**Complete Line of Metzeler Tires**



W. 300 Second Ave. • Spokane, WA  
12004 Aurora Ave. N. • Seattle, WA  
5212 S. Tacoma Way • Tacoma, WA

Order TOLL FREE 1-800-541-5550  
In Washington Call 1-800-572-5690



**CALL FOR OUR  
FREE CATALOG**



# SUZUKI PE175X

come less of a problem once the shocks loosen up some.

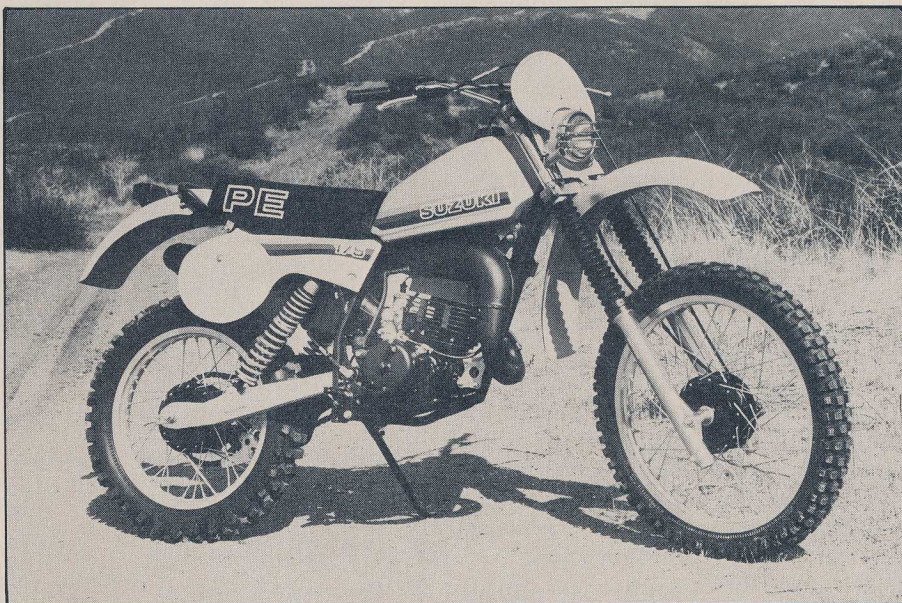
Wheelbase on the PE, at 56.3 inches, is short compared to a KDX, but right about average compared to everyone else. The only place the 56-inch wheelbase becomes noticeable is when climbing hills. The ultra-long KDX can climb up the nastiest slope with zero front-wheel lift; not so with the PE. This bike *likes* to do wheelies, but does so predictably, and not with a lurch like an IT. Just pay attention to it when chugging up a hill and you'll

have no problems. Dave Riley

## Bits and pieces

The shocks are laid down and covered with spiffy side panels, but they still stick out rather far at the top mount. When you stand up on the PE, the bulges hit right at the top of your boot and force your legs apart, making the pegs feel like they're too close together. This, the shape of the seat, and the bend of the handlebars need improvement before the PE can be truly comfortable.

The air box is large, with a lot of



## SUZUKI PE175X

|                                 |                           |
|---------------------------------|---------------------------|
| Name and model                  | Suzuki PE175X             |
| Engine type                     | Air-cooled, two-stroke    |
| Bore and stroke                 | 62mm x 57mm               |
| Displacement                    | 172cc                     |
| Horsepower (claimed)            | N/A                       |
| Carburetion                     | 34mm Mikuni               |
| Factory recommended jetting:    |                           |
| Main jet                        | 250                       |
| Needle jet                      | 6DP17-3                   |
| Jet needle                      | R3                        |
| Pilot jet                       | 25                        |
| Slide number                    | 2.0                       |
| Recommended gasoline            | Premium                   |
| Fuel tank capacity              | 10.6 liters (2.8 gallons) |
| Fuel tank material              | Plastic                   |
| Lubrication                     | Pre-mix                   |
| Recommended oil                 | Suzuki CCI                |
| Oil capacity, transmission      | .900cc (.95 quart)        |
| Air filtration                  | Oiled foam                |
| Clutch type                     | Wet, multi-plate          |
| Transmission                    | Six-speed                 |
| Gearbox ratios:                 |                           |
| 1                               | 3.090:1                   |
| 2                               | 2.214:1                   |
| 3                               | 1.647:1                   |
| 4                               | 1.300:1                   |
| 5                               | 1.045:1                   |
| 6                               | 0.875:1                   |
| Gearing, front/rear             | 48/12                     |
| Ignition                        | CDI                       |
| Primary kick system?            | Yes                       |
| Recommended spark plug          | NGK B10EGV                |
| Silencer/spark arrestor/quality | Yes, yes, very quiet      |
| Exhaust system                  | Up-pipe, through frame    |
| Frame, type                     | Single downtube, cradle   |
| Wheelbase                       | 1430mm (56.3 inches)      |

|                            |                     |
|----------------------------|---------------------|
| Ground clearance           | 320mm (12.6 inches) |
| Seat height                | 35.5 inches         |
| Steering head angle (rake) | 29.5 degrees        |
| Trail                      | 128mm (5.04 inches) |
| Weight with one gallon gas | 230 pounds          |
| Rim material               | Aluminum alloy      |
| Tire size and type:        |                     |

|                              |  |
|------------------------------|--|
| Front                        | 3.00x21 Bridgestone M19                        |
| Rear                         | 4.00x18 Bridgestone M20                        |
| Suspension, type and travel: |  |
| Front                        | Air/oil Kayaba forks, 250mm (9.8 inches)       |
| Rear                         | Lay-down Kayaba gas shocks, 247mm (9.7 inches) |

|                       |                  |
|-----------------------|------------------|
| Intended use          | Off-road, enduro |
| Country of origin     | Japan            |
| Retail price, approx. | \$1479           |

|                                |   |
|--------------------------------|---|
| Distributor:                   | U.S. Suzuki Motor Company,<br>3251 East Imperial Highway,<br>Brea, California 92621 |
| Parts prices, high-wear items: |   |
| Piston assembly, complete      | \$25.24   |
| Rings only                     | 15.26   |
| Cylinder                       | 132.44  |
| Shift lever                    | 4.57  |
| Brake pedal                    | 12.83   |
| Front sprocket                 | N/A   |

|  |    |
|--|----|
| Overall rating, 0 to 100, various categories, keeping intended use of machine in mind: |    |
| Handling   | 94 |
| Suspension   | 92 |
| Power  | 96 |
| Cost   | 95 |
| Attention to detail  | 94 |
| Effectiveness, stone stock   | 96 |



breathing area, and has a large, round cap on the top to aid waterproofing. If wetness isn't a problem in your area, we'd be willing to bet that a little more horsepower is available to the person who removes that cap and then rejects the carb.

The silencer is huge and heavy and also very quiet; it doesn't *really* resemble a bathysphere at all.

Up at the bars, there's a set of standard hand levers. Nothing to shout about, but this year they're mounted on split perches, making replacement possible without pulling off the grips.

A high/low beam headlight is mounted in plastic up front, and it's on all the time. If you wanted to shut it off, you can either break it or install a switch.

That straight pull throttle assembly has a quick-change cable feature and is a joy to work on.

Suzuki supplies a small odometer on the PE, with the drive located in the brake backing plate. Even though these odometers look small and flimsy, they are just about the best you can get. We use them on nearly every one of our personal enduro bikes and find them to be extremely durable and accurate. They'll also work on any of the top Japanese enduro bikes with no modifications.

The extruded aluminum swingarm is very strong and light, but ours had some lousy-looking welds in it. There is a grease fitting in the pivot area for lubing the needle bearings.

We told you about the quick-change rear wheel last year, but we'll go over it one more time: pull the axle out, remove the right side spacer, and the wheel comes right off in your arms. The brake hub, backing plate and sprocket assembly remain firmly attached to the left side of the swingarm. Nice system.

#### The bottom line

What can we say? We had a few snivels about the PE, but there was nothing so radically wrong that we wouldn't buy the bike ourselves. It doesn't have the horsepower or top speed stability of the Kawasaki KDX, but it does have all you need to get the job done—without the suspension maintenance hassles of Big Green.

Simplicity, that's the word. If you want a bike you can ride and not worry about, it looks like the PE is the one for you. □

# RED DOT

HI-POINT

## CHAMPIONSHIP M-X ENDURO TIRES



3:00x21  
2 & 4 ply

100/90  
2 & 4 ply

4:50x18

5:00x18

### RED DOT KNOBBIES ARE AT YOUR HI-POINT DEALER



BOB HANNAH

Whether it's at a National M-X, National Enduro, National Hare Scramble, or an amateur race at the local track, you'll find "RED DOT" being used by the winners. "RED DOT" knobbies are now available in five popular sizes. Pick them up at your local Hi-Point dealer. Hi-Point has brought down the cost of being competitive.



HI-POINT RACING PRODUCTS  
3709 W. Erie Ave., Lorain, OH 44053  
9604 Oates Dr., Sacramento, CA 95827

## ALL NEW 1981 MOTOCROSS 125

**BY THE STAFF OF ACTION AND DIRT BIKE FOR 1981**

FLOW BRANCH FOOTING: MAKE YOUR BIKE EASIER TO RIDE

PLUS: CHECK UP ON NATIONAL TEAM PROFILES COMPLETE BUYER'S GUIDE

**MOTOCROSS 125**

Dirt Bike and Motocross Action's staff got together to make a Special Issue on just motocross 125's. Find out which of the latest '81 125's won in the Big Four Shootout! Also check out how the Derbi, Cagiva and the hot, new KTM compare to the "J" models. Also get a close-up look at all the factory pro-age, Factory Star's interviews, Buyer's Guides, GP coverage, Burns and much more!

**Order yours today!**

Make check or money order payable to: **MX 1 • 2 • 5 - 1981, Box 317, Encino, California 91316.**

NAME \_\_\_\_\_ ADDRESS \_\_\_\_\_ CITY/STATE/ZIP \_\_\_\_\_

(Please enclose \$2.50 plus 75 cents postage and handling for each copy ordered. Canada add \$1.50 and all other foreign add \$2.50 postage and handling for each copy ordered. All items will be shipped by surface mail. U.S. funds please. DB7-1)