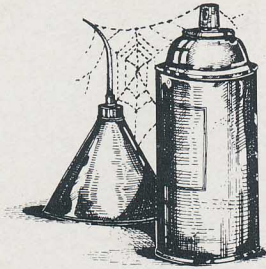


# "HSL" CHAIN

## The Improved Cycle Chain From Acme



Now from Acme Chain - one of the first manufacturers to develop self-lubricating chain - an improved

version of Sintered-Lube® designed especially for motorcycles.

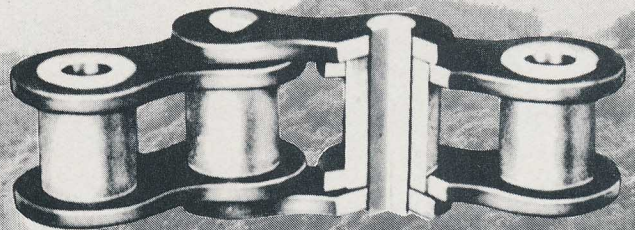
HSL Chain features precise joint clearances, to minimize chain snatch and noise . . . increased inner plate thickness, to allow heavier assembly fit and increased strength . . . added bushing length, to provide greater wear area and positive clearance to minimize friction and prevent frozen joints . . . specially treated rivet heads, for easier cutting . . . hot-dip preservative plus factory sealed packages, to guarantee a clean, rust-free, uncontaminated chain and insure proper break-in. It's the best chain going!

The special oil throughout the pores of the sintered metal bushings expand

lubricates all bearing surfaces when the chain is running. When operation stops, the oil is reabsorbed like a sponge back into the bushings. This cycle continues throughout the life of the chain.

If self-lubricating chain is for you, see your dealer about this improved chain. It's available in the most popular 520 HSL, 530 HSL and 630 HSL sizes. If he doesn't have it, he can get it fast through Acme's national distribution network. Check this out at your dealer soon, and let Acme . . .

**Pull For You . . .  
In The Long Run!**



# ACME CHAIN

INCOM INTERNATIONAL INC



821 Main Street  
Holyoke, Mass. 01040  
(413) 536-1576