

(5) YZ250K

## Specifications

This specification appendix in fact covers both 'model recognition' and a model chart. There were just too many models to provide all the necessary information to recognize models, but the decisive information, frame and chassis numbers, I've included in the specifications. Unless otherwise stated, the number after the three

Model	DT1	DT1C/E	DT2/DT3	DT250	DT250
Year	1968	1970-1971	1972-1973	1975-1976	1977-1980
Chassis/engine id.	DT1	DT1/DT1-F	DT1F-160101/ DT1F-166101	450	1M2/1R7**
Bore (mm)	70	70	70	70	70
Stroke (mm)	64	64	64	64	64
Capacity (cc)	246	246	246	246	246
Compression ratio (to 1)	6.8 (8.2)*	6.4 (8.2)*	6.8 (7.13)*	6.8	6.7
bhp @ rpm	21@6000(30@7000)*	23@7000 (30@7000)*	24@7000 (31@8000)*	24 @ 7000	17 @ 6000
Torque (kgm) @ rpm	2.5 @ 5000 (3.1 @ 6500)*	2.4@6500 (3.1@6500)*	2.53 @ 6000 (2.86 @ 7000)*		2.12 @ 5000
Oil system	Autolube	Autolube	Autolube	Autolube	Autolube
Engine cooling	air	air	air	air	air
Carburettor (mm)	VM26SH (VM30SH)*	VM26SH (VM30SH)*	VM26SH (VM30SC)*	VM28SS	VM28SS
Ignition system	magneto	magneto	magneto	magneto	magneto (CDI)*
Ignition timing (mm)	3.2 (2.3)*	3.2 (2.3)*	3.2 (2.3)* (3.0)**	3.2	3.2
Primary drive gearing	3.1	3.1	3.1	2.83	2.83
Final drive gearing	44/15 (44/14)*	44/14	44/14	44/14 (47/14)*	47/14
Box gearing first	2.23	2.53 (2.25)*	2.53	2.53	2.54
Box gearing second	1.62	1.79 (1.65)*	1.79	1.68 (1.79)*	1.79
Box gearing third	1.21	1.30 (1.26)*	1.30	1.17 (1.30)*	1.30
Box gearing fourth	1.0	1.0 (1.0)*	1.0	1.0	1.0
Box gearing fifth	0.82	0.77 (0.77)*	0.77	0.86 (0.76)*	0.77
Box gearing sixth	—	—	—	—	—
Fuel (l)	9	9	9.5 (8)*	9	9
Engine oil (l)	1.6	1.6	1.6 (0.57)*	1.5	1.15
Transmission oil (l)	1.0	1.0	1.0	1.0	1.2
Front fork oil (cc/leg)	210	210 (175)***	175	175	190
Front tyre	3.25 x 19	3.25 x 19 (2.75 x 21)*	3.25 x 19(3.00 x 21)***	3.00 x 21	3.00 x 21
Rear tyre	4.00 x 18	4.00 x 18	4.00 x 18	4.00 x 18	4.00 x 18
Front brake	sls drum	sls drum	sls drum	sls drum	sls drum
Rear brake	sls drum	sls drum	sls drum	sls drum	sls drum
Rear suspension	twin shock	twin shock	twin shock	twin shock	monoshock
Front suspension travel (mm)					195
Rear suspension travel (mm)					140 (150)*
Rake (°)				30.5	30 (28.5)*
Trail (mm)				135	135 (120)*
Width (mm)			910	870	870
Ground clearance (mm)	240	240 (255)**	240	220	255
Wheelbase (mm)	1366	1366 (1390)**	1330 (1340)***	1410 (1415)*	1420
Dry weight (kg)	105	104 (111)**	117 (102)*	123	122
	* = DT1-M	* = DT1C-M/DT1E-M ** = DT1E *** = DT1E/DT1E-M	* = DT12-M ** = DT3 *** = DT2-M & DT3	* = DT250C	* = DT250F, DT250G ** = Europe

alpha-numeric code is -000101. As far as models are concerned, Yamaha produced a new one each year, so a model chart would be meaningless. The year of sale of each model is also recorded in the specifications.

The one entry in the specifications that I hesitated about including were the power and torque values, since some are measured on a

variety of dynamometers and others were claimed, so it is not possible to make any meaningful comparison between them. They have been included simply for the 'ballpark' values they indicate. The number following the 'monoshock' specification of the rear suspension refers to the 'Evolution of monoshock suspension' appendix.

Model	AT1	AT1-MX	AT2/AT3(M)	DT125	DT125
Year	1969-1971	1969-1971	1972-1973	1973-1977	1978-1980
Chassis/engine id.	AT1	AT1	AT1	452	2N0
Bore (mm)	56	56	56	56	56
Stroke (mm)	50	50	50	50	50
Capacity (cc)	123	123	123	123	123
Compression ratio (to 1)	7:1	8:0	7:1 (7-8)	7:1	7:2
bhp @ rpm	11.5 @ 7500	18 @ 8500	13 @ 7000 (20 @ 8500)*	13 @ 7000	9.4 @ 7000
Torque (kgm) @ rpm	1.17 @ 6000	1.57 @ 7500	1.38 @ 6000 (1.7 @ 8000)*	1.38 @ 6000	1.05 @ 6500
Oil system	Autolube	Autolube	Autolube	Autolube	Autolube
Engine cooling	air	air	air	air	air
Carburettor (mm)	VM24SH	VM26SH	VM24SH (VM26SC)*	VM24SH	VM24SS
Ignition system	magneto	magneto	magneto	starter dynamo	magneto
Ignition timing (mm)	1-8	2-0	1-8 (2-0)	1-8	1-45
Primary drive gearing	3-9	3-9	3-9	3-9	3-23
Final drive gearing	45/14	45/14 (45/15)*	45/15 (45/14)*	45/14 (45/15)*	49/15
Box gearing first	3-18	3-18 (2-83)*	3-18 (2-83)*	3-18	3-5
Box gearing second	2-0	2-0 (1-88)**	2-0 (1-86)*	2-0	2-21
Box gearing third	1-37	1-37 (1-37)**	1-37*	1-37	1-56
Box gearing fourth	1-0	1-0 (1-09)**	1-0 (1-1)*	1-0	1-19
Box gearing fifth	0-8	0-8 (0-96)**	0-8 (0-96)*	0-8	0-96
Box gearing sixth	—	—	—	—	0-8
Fuel (l)	7	7	7	7	7-2
Engine oil (l)	1-23	1-23	1-23	1-2	1-0
Transmission oil (l)	0-74 (0-76)**	0-74 (0-76)**	0-75	0-75	0-65
Front fork oil (cc/leg)	160 (150)*	160 (150)*	120	128	146
Front tyre	3-00 x 18	3-25 x 18	3-00 x 18 (2-75 x 21)*	3-00 x 19	2-75 x 21
Rear tyre	3-25 x 18	3-50 x 18	3-25 x 18 (3-50 x 18)*	3-25 x 18	3-50 x 18
Front brake	sls drum	sls drum	sls drum	sls drum	sls drum
Rear brake	sls drum	sls drum	sls drum	sls drum	sls drum
Rear suspension	twin shock	twin shock	twin shock	twin shock	monoshock (2)
Front suspension travel (mm)	145	145	145	145 (160)*	170
Rear suspension (mm)	110	110		90	100
Rake (°)	29-5	29-5		31 (32)*	30
Trail (mm)				124 (141)*	127
Width (mm)	909	909	910		826
Ground clearance (mm)	225	225	240		274
Wheelbase (mm)	1285	1285	1280 (1290)*		1350
Dry weight (kg)	94 (99)* (100)**	91	100 (92)*	105-5 (104-5)*	97-5

\*=AT1B  
\*\*=AT1C

\*=AT1-B  
\*\*=AT1-C

\*=M model

\*=DT125C

Model	CT1	CT2/CT3	DT175	DT175	HT1/HT2
Year	1969-1971	1972-1973	1973-1977	1978-1980	1970-1971
Chassis/engine id.	CT1		443 (559)*	2A7/2H5	HT1/HT2
Bore (mm)	66	66	66	66	50
Stroke (mm)	50	50	50	50	45-6
Capacity (cc)	171	171	171	171	89
Compression ratio (to 1)	6-8	6-8	6-1 (6-6)*	6-8	6-8
bhp @ rpm	15 @ 7000	16 @ 7500	16 @ 7500	12-2 @ 7000	8-5 @ 8000
Torque (kgm) @ rpm	1-64 @ 5500	1-64 @ 6000	1-65 @ 6000	1-32 @ 5500	0-9 @ 6500
Oil system	Autolube	Autolube	Autolube	Autolube	Autolube
Engine cooling	air	air	air	air	air
Carburettor (mm)	VM24SH	VM24SH	VM24SS	VM24SS	VM20SC
Ignition system	magneto	magneto	magneto	CDI	magneto
Ignition timing (mm)	1-8	1-8	1-8	1-8	1-8
Primary drive gearing	3-9	3-9	3-9	3-23	3-9
Final drive gearing	45/14	45/16	45/16	49/16	49/14
Box gearing first	3-18	2-53	3-18	3-5	3-18
Box gearing second	2-0	1-88	2-0	2-21	2-0
Box gearing third	1-37	1-37	1-37	1-56	1-37
Box gearing fourth	1-0	1-0	1-0	1-2	1-0
Box gearing fifth	0-8	0-8	0-8	0-96	0-8
Box gearing sixth	—	—	—	0-8	—
Fuel (l)	7	7	7	7	6-5
Engine oil (l)	1-23	1-23	1-2	1-0	1-2
Transmission oil (l)	0-74	0-75	0-65	0-65	0-75
Front fork oil (cc/leg)	160	120	130	146	140
Front tyre	3-25 x 18	3-25 x 18	3-00 x 19 (2-75 x 21)*	2-75 x 21	2-75 x 18
Rear tyre	3-50 x 18	3-50 x 18	3-50 x 18	3-50 x 18	3-00 x 18
Front brake	sls drum	sls drum	sls drum	sls drum	sls drum
Rear brake	sls drum	sls drum	sls drum	sls drum	sls drum
Rear suspension	twin shock	twin shock	twin shock	monoshock (2)	twin shock
Front suspension travel (mm)			145 (160)*	180	
Rear suspension travel (mm)			90	100	
Rake (°)			31 (31-5)*	30	
Trail (mm)			122 (138)*	126	
Width (mm)	910			1016	900
Ground clearance (mm)	240			265	225
Wheelbase (mm)	1290			1350	1220
Dry weight (kg)	96	97	98-6	98	85

\*=DT175C



Model	LT2/LT3	DT100 (A-G)	RT1	RT1-M	RT2/RT3
Year	1971-1972	1973-1980	1970-1971	1970-1971	1972-1973
Chassis/engine id.			RT1	RT1-070101	RT1-160101/ RT1-164101
Bore (mm)	52	52	80	80	80
Stroke (mm)	45.6	45.6	70	70	70
Capacity (cc)	97	97	351	351	351
Compression ratio (to 1)	6.9/7.8	6.8 (7.2)* (7.4)**	6.6 (6.3)*	7.5 (7.2)*	6.3 (7.13)*
bhp @ rpm	10@7500/16@10,500	10 @ 7500	30 @ 6000	36 @ 6500	32@6000(39@7500)*
Torque (kgm) @ rpm	0.97 @ 7000/ 1.12 @ 9500	0.97 @ 7000	3.6 @ 5500	3.96 @ 6500	3.82@5500 (3.82@7000)*
Oil system	Autolube	Autolube	Autolube	Autolube	Autolube
Engine cooling	air	air	air	air	air
Carburettor (mm)	VM20SH/VM26SH	VM22SS	VM32SH	VM34SH	VM32SH (VM34SC)*
Ignition system	magneto	magneto	magneto	magneto	magneto
Ignition timing (mm)	1.8/2.0	1.8	2.9	3.4	2.9 (2.5)*
Primary drive gearing	3.9	3.9	3.1	3.1	3.1
Final drive gearing	49/14 / 52/14	49/14	39/15	44/15	39/15 (51/15)*
Box gearing first	3.18/2.83	3.18	2.53	2.25	2.53 (2.25)*
Box gearing second	2.0/1.88	2.0	1.79	1.65	1.79 (1.65)*
Box gearing third	1.37	1.37	1.3	1.26	1.3 (1.21)*
Box gearing fourth	1.0/1.09	1.0	1.0	1.0	1.0 (1.0)*
Box gearing fifth	0.8/0.96	0.8	0.77	0.79	0.77 (0.79)*
Box gearing sixth	—	—	—	—	—
Fuel (l)	6	6.0 (7.0)* (4.5)**	9.5	9.5	9.5
Engine oil (l)	1.23	1.2 (1.0)**	1.6	1.6	1.6
Transmission oil (l)	0.70	0.65	1.0	1.0	1.0
Front fork oil (cc/leg)	136	160 (116)**	210	210 (175)*	175
Front tyre	2.75 x 18/2.75 x 19	2.75 x 19 (2.50 x 18)**	3.25 x 19	2.75 x 21	3.25 x 19 (3.00 x 21)**
Rear tyre	3.00 x 18	3.00 x 18 (3.00 x 16)**	4.00 x 18	4.00 x 18	4.00 x 18
Front brake	sls drum	sls drum	sls drum	sls drum	sls drum
Rear brake	sls drum	sls drum	sls drum	sls drum	sls drum
Rear suspension	twin shock	twin shock	twin shock	twin shock	twin shock
*Front suspension travel (mm)		145			
Rear suspension travel (mm)		90			
Rake (°)		31 (30.5)**	29.5	29.5	
Trail (mm)		132 (130)*	137	137	
Width (mm)	800		890	890	950
Ground clearance (mm)	220		255	255	225
Wheelbase (mm)	1240/1255		1400	1400	1384 (1410)*
Dry weight (kg)	85	93	117 (108)*	108 (109)*	119 (103)*

\* = DT100C

\* = RT1-B

\* = RT1B-M

\* = RT2-M

\*\* = RT2-M &amp; RT3

\*\* = DT100D, E, F, G

Model	DT360	DT400	DT400	MX360	MX400B
Year	1974	1975-1976	1977-1978	1973-1974	1975
Chassis/engine id.	446	501	1M2/1R6*	365	510
Bore (mm)	80	85	85	80	85
Stroke (mm)	70	70	70	70	70
Capacity (cc)	351	397	397	351	397
Compression ratio (to 1)	6.4	6.4	6.4	7.43	7.57
bhp @ rpm		27 @ 5000		39 @ 7500	38.76 @ 8000
Torque (kgm) @ rpm		3.8 @ 5000		3.86 @ 7000	3.92 @ 7000
Oil system	Autolube	Autolube	Autolube	Autolube	mix
Engine cooling	air	air	air	air	air
Carburettor (mm)	VM30SS	VM32SS	VM34SC	VM34SC	VM38SS
Ignition system	CDI	CDI	CDI	CDI	CDI
Ignition timing (mm)	2.9	2.9	2.9	2.5	2.7
Primary drive gearing	2.67	2.67	2.83	2.67	2.67
Final drive gearing	44/15 (44/16)*	40/14	45/16	51/14	50/14
Box gearing first	2.53	2.53	2.71	2.25	2.25
Box gearing second	1.79 (1.68)*	1.79	1.79	1.65	1.68
Box gearing third	1.30 (1.17)*	1.30	1.30	1.26	1.26
Box gearing fourth	1.0	1.0	1.0	1.0	1.0
Box gearing fifth	0.77 (0.86)*	0.77	0.77	0.79	0.79
Box gearing sixth	—	—	—	—	—
Fuel (l)	9	9	9	9	8
Engine oil (l)	1.5	1.5	1.2	0.56	—
Transmission oil (l)	1.2	1.0	1.2	1.2	1.0
Front fork oil (cc/leg)	175	175	190	175	190
Front tyre	3.00 x 21	3.00 x 21	3.00 x 21	3.00 x 21	3.00 x 21
Rear tyre	4.00 x 18	4.00 x 18	4.00 x 18	4.00 x 18	4.60 x 18
Front brake	sls drum	sls drum	sls drum	sls drum	sls drum
Rear brake	sls drum	sls drum	sls drum	sls drum	sls drum
Rear suspension	twin shock	twin shock	monoshock (2)		monoshock (1)
Front suspension travel (mm)					190
Rear suspension travel (mm)					90
Rake (°)	30.5	30.5	28.5		31
Trail (mm)	135	135	120		139
Width (mm)	870	870	870	950	985
Ground clearance (mm)	220	220	255	225	235
Wheelbase (mm)	1425 (1420)*	1410	1415	1420	1415
Dry weight (kg)	125	124	125	106	103

\* = Europe only

\* = Europe

Model	<b>MX100</b>	<b>MX125</b>	<b>MX250</b>	<b>MX250B</b>	<b>SC500</b>
Year	<b>1974-1980</b>	<b>1974-1976</b>	<b>1973-1974</b>	<b>1975</b>	<b>1973-1974</b>
Chassis/engine id.		402/565	364	509	363
Bore (mm)	52	56	70	70	95
Stroke (mm)	45.6	50	64	64	70
Capacity (cc)	97	123	246	246	496
Compression ratio (to 1)	7.8	7.8 (7.5)*	7.05	7.54	7.1
bhp @ rpm	16 @ 10,500	20 @ 8500	31 @ 7500		44 @ 6500
Torque (kgm) @ rpm	1.12 @ 9500	1.7@8000(1.6@9500)*	3.03 @ 7000		5.12 @ 6000
Oil system	Autolube	Autolube (mix)*	Autolube	mix	Autolube
Engine cooling	air	air	air	air	air
Carburettor (mm)	VM26SC	VM26SC (VM30SC)*	VM30SC	VM38SS	VM38SC
Ignition system	magneto	magneto (CDI)*	CDI	CDI	CDI
Ignition timing (mm)	2.0	2.0	2.3	2.3	2.7
Primary drive gearing	3.9	3.9	2.83	2.7	2.66
Final drive gearing	52/14	45/14	51/14	50/13	51/14
Box gearing first	2.83	2.83	2.25	1.83	2.0
Box gearing second	1.88	1.88	1.65	1.41	1.35
Box gearing third	1.37	1.37	1.26	1.17	1.00
Box gearing fourth	1.09	1.09	1.0	1.0	0.80
Box gearing fifth	0.96	0.96	0.79	0.86	—
Box gearing sixth	—	—	—	—	—
Fuel (l)	6	7	9	8	8
Engine oil (l)	1.2	1.2	0.5	—	0.56
Transmission oil (l)		0.75	1.0	1.0	1.2
Front fork oil (cc/leg)		120	175	190	194
Front tyre	2.75 x 19	2.75 x 21 (3.00 x 21)*	3.00 x 21	3.00 x 21	3.00 x 21
Rear tyre	3.00 x 18	3.50 x 18 (4.00 x 18)*	4.00 x 18	4.60 x 18	4.60 x 18
Front brake	sls drum	sls drum	sls drum	sls drum	sls drum
Rear brake	sls drum	sls drum	sls drum	sls drum	sls drum
Rear suspension	twin shock	twin shock	twin shock	monoshock (1)	twin shock
Front suspension travel (mm)	—	—	—	195	—
Rear suspension travel (mm)	—	—	—	90	—
Rake (°)	31	29.5		31	
Trail (mm)	135	137		139	
Width (mm)	865	910	950	985	950
Ground clearance (mm)	210	240 (274)*	225	235	225
Wheelbase (mm)	1260	1290 (1465)*	1420	1420	1420
Dry weight (kg)	84	92 (89)*	101	100	107

\* = MX125C

Model	<b>YZ80D</b>	<b>YZ80E</b>	<b>YZ80F/G</b>	<b>YZ80H</b>	<b>YZ80J/K</b>
Year	<b>1977</b>	<b>1978</b>	<b>1979-1980</b>	<b>1981</b>	<b>1982-1983</b>
Chassis/engine id.	1T0	2J5	2X6/3R1	4V1	5X2/22W
Bore (mm)	49	49	49	49	47
Stroke (mm)	42	42	42	42	45.6
Capacity (cc)	79	79	79	79	79
Compression ratio (to 1)	7.3	7.2	7.0	7.1	7.5 (8.0)*
bhp @ rpm			14.3 @ 11,000		
Torque (kgm) @ rpm			0.94 @ 11,000		
Oil system	mix	mix	mix	mix	mix
Engine cooling	air	air	air	air	liquid
Carburettor (mm)	VM26SS	VM26SS	VM26SS	VM24SS	VM26SS
Ignition system	magneto	CDI	CDI	CDI	CDI
Ignition timing (mm)				0.8	0.8
Primary drive gearing	3.58	3.14	3.14	3.58	3.14 (3.58)*
Final drive gearing	48/13	51/14	51/14	44/13	44/13 (42/12)*
Box gearing first	3.25	2.40	2.40	2.77	2.77
Box gearing second	2.00	1.83	1.83	2.06	2.06
Box gearing third	1.43	1.48	1.48	1.63	1.63
Box gearing fourth	1.13	1.22	1.22	1.33	1.33
Box gearing fifth	0.96	1.04	1.04	1.15	1.15
Box gearing sixth	—	—	0.93	1.04	1.04
Fuel (l)	4.3	4.5	4.5	4.6	5.2 (5.0)*
Engine oil (l)	—	—	—	—	—
Transmission oil (l)			0.75	0.75	0.7 (0.65)*
Front fork oil (cc/leg)				188	188 (260)*
Front tyre	2.50 x 14	2.50 x 16	2.50 x 16 (2.75 x 17)*	2.75 x 17	2.75 x 17
Rear tyre	3.60 x 14	3.60 x 14	3.60 x 14	4.10 x 14	4.10 x 14
Front brake	sls drum	sls drum	sls drum	sls drum	sls drum
Rear brake	sls drum	sls drum	sls drum	sls drum	sls drum
Rear suspension	twin shock	monoshock (2)	monoshock (3)	monoshock (3)	monoshock (4/5)
Front suspension travel (mm)	132	140	165 (180)*	215	225 (240)*
Rear suspension travel (mm)	85	120	155 (170)*	205	205 (250)*
Rake (°)	27.5	28.5	28	27	26
Trail (mm)	80	84	80	84	80
Width (mm)	737	719	730	765	765
Ground clearance (mm)	201	195	200	255	270
Wheelbase (mm)	1171	1170	1180	1205	1230
Dry weight (kg)	65	67	62	60	67 (62)*

\* = YZ80G

\* = YZ80K



Model	YZ80L/N	YZ100C	YZ100D/E	YZ100F	YZ100G/H
Year	1984-1985	1976	1977-1978	1979	1980-1981
Chassis/engine id.	39K/43K	1J4	1J4/2K5	2W5	3R2-000101/ 3R2-020101
Bore (mm)	47	50	50	50	50
Stroke (mm)	45.6	50	50	50	50
Capacity (cc)	79	98	98	98	98
Compression ratio (to 1)	9.2 (8.6)*	7.2	7.2	7.2	8.4
bhp @ rpm					
Torque (kgm) @ rpm					
Oil system	mix	mix	mix	mix	mix
Engine cooling	liquid	air	air	air	air
Carburettor (mm)	VM26SS	VM30SC	VM30SS	VM30SS	VM30SS
Ignition system	CDI	CDI	CDI	CDI	CDI
Ignition timing (mm)	0.6 (0.8)*				0.8
Primary drive gearing	3-15 (3.58)*	3-9	3-89		3-89
Final drive gearing	48/14 (46/15)*	40/12			45/12
Box gearing first	2.77	2.54	2.46	2.46	2.46
Box gearing second	2.06	1.93	1.88	1.88	1.88
Box gearing third	1.63	1.56	1.50	1.50	1.50
Box gearing fourth	1.38	1.30	1.25	1.25	1.25
Box gearing fifth	1.23	1.14	1.09	1.09	1.09
Box gearing sixth	1.13	1.05	1.00	1.00	1.00
Fuel (l)	5		5	5.2	5.6
Engine oil (l)	—		—	—	—
Transmission oil (l)	0.65			0.75	0.8
Front fork oil (cc/leg)	272			180	258
Front tyre	80/80 × 17	2.75 × 21	2.75 × 21		3.00 × 21
Rear tyre	110/80 × 14	3.50 × 18	3.50 × 18		4.10 × 18
Front brake	sls drum	sls drum	sls drum	sls drum	sls drum
Rear brake	sls drum	sls drum	sls drum	sls drum	sls drum
Rear suspension	monoshock (5)	monoshock (1)	monoshock(1/2)	monoshock (2)	monoshock (2)
Front suspension travel (mm)	255		180		200
Rear suspension travel (mm)	260		170		200
Rake (°)	26		29	29	29.5
Trail (mm)	80		117		130
Width (mm)	765				860
Ground clearance (mm)	290	275	260	280	310
Wheelbase (mm)	1235	1370	1365	1364	1375
Dry weight (kg)	60	91	91 (80)*	84	84

\* = YZ80N

\* = YZ100E

Model	YZ100J/K/L	YZ125A	YZ125C	YZ125X	YZ125D/E
Year	1982-1984	1974	1975	1976	1977-1978
Chassis/engine id.	5X3/5X3-060101/ 43L	453	537	1G8/1J8*	1W1/2K5
Bore (mm)	50	56	56	56	56
Stroke (mm)	50	50	50	50	50
Capacity (cc)	98	123	123	123	123
Compression ratio (to 1)	8.0	8.0	7.5	7.4	7.8 (7.4)*
bhp @ rpm		15.3 @ 9500	17 @ 11,000	20.67 @ 10,500	14.7 @ 11,000
Torque (kgm) @ rpm		1.27 @ 8000	1.39 @ 10,500	1.47 @ 10,000	1.01 @ 9500
Oil system	mix	mix	mix	mix	mix
Engine cooling	air	air	air	air	air
Carburettor (mm)	VM30SS	VM28SC	VM34SS	VM34SC	VM32SS
Ignition system	CDI	CDI	CDI	CDI	CDI
Ignition timing (mm)	0.8	2.0	1.2		
Primary drive gearing	3.44	3.89	3.23	3.23	3.23
Final drive gearing	50/12	47/14	53/14	46/12	51/12
Box gearing first	2.46	2.83	2.54	2.54	2.46
Box gearing second	1.86	2.07	1.93	1.93	1.87
Box gearing third	1.50	1.61	1.56	1.56	1.50
Box gearing fourth	1.25	1.32	1.30	1.30	1.25
Box gearing fifth	1.11	1.14	1.14	1.14	1.09
Box gearing sixth	1.00	—	1.05	1.05	1.00
Fuel (l)	8.2	5.5	5.5	5.5	6.5
Engine oil (l)	—	—	—	—	—
Transmission oil (l)	0.75	0.65	0.65	1.3	
Front fork oil (cc/leg)	340	135	190	190	
Front tyre	3.00 × 21	2.75 × 21	3.00 × 21	3.00 × 21	3.00 × 21
Rear tyre	4.10 × 18	3.50 × 18	4.10 × 18	4.00 × 18	4.10 × 18
Front brake	sls drum	sls drum	sls drum	sls drum	sls drum
Rear brake	sls drum	sls drum	sls drum	sls drum	sls drum
Rear suspension	monoshock (4)	twin shock	monoshock (1)	monoshock (1)	monoshock(2)
Front suspension travel (mm)	250		170		236 (230)*
Rear suspension travel (mm)	250		135		224 (240)*
Rake (°)	27.5	30	31	31	31 (30)*
Trail (mm)	115	140	140	140	139 (133)*
Width (mm)	840	925	985	900	851 (864)*
Ground clearance (mm)	315	260	285	292	287 (295)*
Wheelbase (mm)	1420	1345	1410	1415	1410 (1420)*
Dry weight (kg)	87	80	86	86	88.5 (86)*

\* = Europe &amp; Japan

\* = YZ125E

Model	YZ125F	YZ125G	YZ125H	YZ125J/K	YZ125L/N
Year	1979	1980	1981	1982-1983	1984-1985
Chassis/engine id.	2X3/2Y5*	3R3/3N8*	4V2	5X4	39W/43M
Bore (mm)	56	56	56	56	56
Stroke (mm)	50	50	50	50	50
Capacity (cc)	123	123	123	123	123
Compression ratio (to 1)	8.3	8.5	8.1	7.7-9.8	8.0-9.9
bhp @ rpm	26 @ 11,000	26.5 @ 11,000			
Torque (kgm) @ rpm	1.71 @ 10,500	1.80 @ 9500			
Oil system	mix		mix	mix	mix
Engine cooling	air	air	liquid	liquid	liquid
Carburettor (mm)	VM32SS	VM32SS	VM34SS	VM34SS	VM36SS
Ignition system	CDI	CDI	CDI	CDI	CDI
Ignition timing (mm)		2-27		1-88	(1-21)*
Primary drive gearing	3-83	3-83	3-44	3-44	3-33
Final drive gearing	43/12	48/12	48/12	46/12 (48/12)*	48/12 (52/12)*
Box gearing first	2-46	2-46	2-46	2-46	2-46
Box gearing second	1-88	1-86	1-86	1-86	1-87
Box gearing third	1-50	1-50	1-50	1-50	1-50
Box gearing fourth	1-25	1-25	1-25	1-25	1-25
Box gearing fifth	1-09	1-09	1-09	1-09	1-09
Box gearing sixth	1-00	1-00	1-00	1-00	1-00
Fuel (l)	6	6.5	6.5	8.2 (7.0)*	7.8 (7.5)*
Engine oil (l)	—	—	—	—	—
Transmission oil (l)		0.7	0.8	0.85	(0.85)*
Front fork oil (cc/leg)		360		415	(540)*
Front tyre	3.00 x 21	3.00 x 21	3.00 x 21	3.00 x 21	90/90 x 21
Rear tyre	4.10 x 18	4.10 x 18	4.10 x 18	4.10 x 18 (4.25 x 18)*	12/80 x 18
Front brake	sls drum	sls drum	sls drum	sls drum	tls drum (disc)*
Rear brake	sls drum	sls drum	sls drum	sls drum	sls drum
Rear suspension*	monoshock(2)	monoshock (3)	monoshock (3)	monoshock (4/5)	monoshock (5)
Front suspension travel (mm)	250	300	300	300	300
Rear suspension travel (mm)	230	290	300	310	310
Rake (°)	29.5	29	27.5	27.5 (28)*	27.5
Trail (mm)	128	125	119	118 (121)*	116
Width (mm)	950	950	850	870	815 (850)*
Ground clearance (mm)	290	340	335	350	350
Wheelbase (mm)	1410	1430	1450	1465 (1450)*	1450
Dry weight (kg)	88	85	90	91 (87.5)*	88 (90)*

\* = Europe &amp; Japan

\* = Europe &amp; Japan

\* = YZ125K

\* = YZ125N

Model	YZ250A/B	YZ250C	YZ250D	YZ250E	YZ250F
Year	1973-1974	1976	1977	1978	1979
Chassis/engine id.	431/483	509	1W3	2K7	2X4
Bore (mm)	70	70	70	70	70
Stroke (mm)	64	64	64	64	64
Capacity (cc)	246	246	246	246	246
Compression ratio (to 1)	7.4 (7.8)*	7.69	7.8	7.3	7.9
bhp @ rpm		26.3 @ 8000	26.6 @ 8000	30 @ 7500	27 @ 8000
Torque (kgm) @ rpm				2.9 @ 7000	3.0 @ 6500
Oil system	mix	mix	mix	mix	mix
Engine cooling	air	air	air	air	air
Carburettor (mm)	VM34SC	VM38SC	VM36SC	VM38SS	VM38SS
Ignition system	CDI	CDI	CDI	CDI	CDI
Ignition timing (mm)	2.3			1.8	
Primary drive gearing	3-08		2.66	2.61	2.61
Final drive gearing	52/13 (50/13)*	50/13	54/13	50/13	50/13
Box gearing first	1-83	1-83	2-07	2-33	2-14
Box gearing second	1-41	1-41	1-56	1-81	1-81
Box gearing third	1-17	1-17	1-24	1-44	1-44
Box gearing fourth	1-00	1-00	1-00	1-22	1-20
Box gearing fifth	0-86	0-86	0-86	1-05	1-00
Box gearing sixth	—	—	—	0-92	0-87
Fuel (l)	7	8	7.6	8	8
Engine oil (l)	—	—	—	—	—
Transmission oil (l)	1.0			0.8	
Front fork oil (cc/leg)	194				
Front tyre	3.00 x 21	3.00 x 21	3.00 x 21	3.00 x 21	3.00 x 21
Rear tyre	4.00 x 18	4.10 x 18	4.50 x 18	4.50 x 18	4.50 x 18
Front brake	sls drum	sls drum	sls drum	sls drum	sls drum
Rear brake	sls drum	sls drum	sls drum	sls drum	sls drum
Rear suspension	twin shock	monoshock (1)	monoshock (2)	monoshock (2)	monoshock (2)
Front suspension travel (mm)	194	210	248	250	272
Rear suspension travel (mm)	105 (90)*	165	244	245	264
Rake (°)	30	31.5	30.5	30.5	29.5
Trail (mm)	129	138	134	134	128
Width (mm)	890 (985)*	900	851	898	851
Ground clearance (mm)	226 (240)*	256	286	317	315
Wheelbase (mm)	1420 (1425)*	1450	1450	1454	1450
Dry weight (kg)	94 (97)*	106	104	100	100

\* = YZ250B



Model	YZ250G	YZ250H	YZ250J	YZ250K	YZ250L
Year	1980	1981	1982	1983	1984
Chassis/engine id.	3R4	4V3	5X5	24Y-100101*/ 24Y-000101	39X/43N*
Bore (mm)	70	70	70	68	68
Stroke (mm)	64	64	64	68	68
Capacity (cc)	246	246	246	246	246
Compression ratio (to 1)	8-1	7-9	7-5	7-4 - 9-2	7-8 - 9-5
bhp @ rpm	29-6 @ 8000		33-5 @ 8500		35-3 @ 8500
Torque (kgm) @ rpm	2-78 @ 7500		2-86 @ 8500		3-1 @ 8000
Oil system	mix	mix	mix	mix	mix
Engine cooling	air	air	liquid	liquid	air
Carburettor (mm)	VM38SS	VM38SS	VM38SS	VM38SS	VM38SS
Ignition system	CDI	CDI	CDI	CDI	CDI
Ignition timing (mm)	0-61	0-61		1-5	1-5
Primary drive gearing	2-63		2-63	2-63	2-63
Final drive gearing	48/14	48/14	45/13	48/13	48/13
Box gearing first	2-14	2-14	2-14	2-14	2-14
Box gearing second	1-81	1-81	1-81	1-75	1-75
Box gearing third	1-41	1-41	1-41	1-37	1-44
Box gearing fourth	1-14	1-14	1-14	1-10	1-20
Box gearing fifth	0-98	0-96	0-96	0-91	1-00
Box gearing sixth	0-87	—	—	—	—
Fuel (l)	9-0	7-0	9	9-5	9-5
Engine oil (l)	—	—	—	—	—
Transmission oil (l)	0-8	0-85			0-9
Front fork oil (cc/leg)	387	604			550
Front tyre	3-00 x 21	3-00 x 21	3-00 x 21	90/80 x 21	90/90 x 21
Rear tyre	5-10 x 18	5-10 x 18	5-10 x 18	140/80 x 18	130/80 x 18
Front brake	sls drum	sls drum	tls drum	tls drum	tls drum
Rear brake	sls drum	sls drum	sls drum	sls drum	sls drum
Rear suspension	monoshock (3)	monoshock (3)	monoshock (4)	monoshock (5)	monoshock (5)
Front suspension travel (mm)	300	300	300	287	282
Rear suspension travel (mm)	300	310	320	312	320
Rake (°)	30	28-5	27-5	28-0	28
Trail (mm)	132	120	118	119	119
Width (mm)	935	880	870	820	850
Wheelbase (mm)	310	320	325	335	338
Ground clearance (mm)	1455	1480	1490	1470	1470
Dry weight (kg)	97	99	104	98-4	98

\* = Non-USA

\* = Europe

Model	YZ250N	YZ360A/B	YZ400C/D	YZ400E	YZ400F
Year	1985	1973-1974	1976-1977	1978	1979
Chassis/engine id.		365/484	510/1W4	2K8	2X5
Bore (mm)	68	80	85	85	82
Stroke (mm)	68	70	70	70	75
Capacity (cc)	246	351	397	396	397
Compression ratio (to 1)	8-2 - 9-6	7-0	7-57	7-6	7-4
bhp @ rpm	36-1 @ 8500		34-4 @ 7500 (41 @ 7500)*	41 @ 7500	36-9 @ 7000
Torque (kgm) @ rpm	3-21 @ 7500		3-61 @ 6500	4-02 @ 7000	4-02 @ 6500
Oil system	mix	mix	mix	mix	mix
Engine cooling	liquid	air	air	air	air
Carburettor (mm)	VM38SS	VM34SC	VM38SS	VM38SC	VM38SS
Ignition system	CDI	CDI	CDI	CDI	CDI
Ignition timing (mm)	1-5	2-3	2-7		3-1
Primary drive gearing	2-63	3-08	2-70 (2-24)*	2-67	2-61
Final drive gearing	50/14	48/15	50/14	50/14	50/14
Box gearing first	2-14	1-83	2-29	2-29	2-38
Box gearing second	1-75	1-41	1-71	1-71	1-75
Box gearing third	1-44	1-17	1-30	1-30	1-32
Box gearing fourth	1-20	1-00	1-00	1-00	1-05
Box gearing fifth	1-00	0-86	0-79 (0-84)*	0-84	0-83
Box gearing sixth	—	—	—	—	—
Fuel (l)	9-5	6-8	8-0	7-6	7-6
Engine oil (l)	—	—	—	—	—
Transmission oil (l)	0-9	1-0	1-0	1-2	0-85
Front fork oil (cc/leg)	530	194	415	338	364
Front tyre	90/90 x 21	3-00 x 21	3-00 x 21	3-00 x 21	3-00 x 21
Rear tyre	130/80 x 18	4-60 x 18	5-00 x 18 (4-50 x 18)*	4-50 x 18	5-10 x 18
Front brake	disc	sls drum	sls drum	sls drum	sls drum
Rear brake	sls drum	sls drum	sls drum	sls drum	sls drum
Rear suspension	monoshock (5)	twin shock	monoshock (1/2)	monoshock (2)	monoshock (2)
Front suspension travel (mm)	280	194	215	250	270
Rear suspension travel (mm)	320	105	180 (215)*	250	265
Rake (°)	28	30	28-5 (30-5)*	29-5	29-5
Trail (mm)	120	129	139 (134)*	134	128
Width (mm)	850	889 (985)*	985 (838)*	910	935
Ground clearance (mm)	340	226 (240)*	255 (285)*	290	320
Wheelbase (mm)	1470	1420 (1425)*	1425 (1445)*	1450	1450
Dry weight (kg)	100	96 (98)*	105 (102)*	103	102

\* = YZ360B

\* = YZ400D

Model	<b>YZ465G/H</b>	<b>YZ490J</b>	<b>YZ490K</b>	<b>YZ490L/N</b>	<b>IT125G/H</b>
Year	<b>1980</b>	<b>1982</b>	<b>1983</b>	<b>1984-1985</b>	<b>1980-1981</b>
Chassis/engine id.	3R5/4V4	5X6	23X-000101/ 23X-100101*	40T/43R	3R9-000101/ 3R9-050101
Bore (mm)	85	87	87	87	56
Stroke (mm)	82	82	82	82	50
Capacity (cc)	465	487	487	487	123
Compression ratio (to 1)	7-0	7-0	7-4	6-9	8-1
bhp @ rpm	41-92 @ 7000	48-3 @ 6500	49-8 @ 7500	47-1 @ 6500	16-87 @ 9000
Torque (kgm) @ rpm	4-76 @ 6000	5-51 @ 6000	5-36 @ 6000	5-25 @ 6500	1-48 @ 8000
Oil system	mix	mix	mix	mix	mix
Engine cooling	air	air	air	air	air
Carburettor (mm)	VM385S	VM385S	VM385S	VM405S	VM30SC
Ignition system	CDI	CDI	CDI	CDI	CDI
Ignition timing (mm)	2-0	2-0	2-63	2-63	3-23
Primary drive gearing	2-63	2-63	2-63	2-63	46/12
Final drive gearing	46/14	44/14	46/14	46/14	3-09
Box gearing first	2-14	1-75	1-75	1-75	2-07
Box gearing second	1-75	1-32	1-32	1-32	1-50
Box gearing third	1-32	1-05	1-05	1-05	1-19
Box gearing fourth	1-05	0-83	0-83	0-83	1-00
Box gearing fifth	0-83	—	—	—	0-84
Box gearing sixth	—	—	—	—	8-5
Fuel (l)	9.5 (9.0)*	10	9.5	10.5	0.65
Engine oil (l)	—	—	—	—	—
Transmission oil (l)	0.8 (0.75)*	0.8	0.8	0.8	—
Front fork oil (cc/leg)	387 (604)*	606	578	530	—
Front tyre	3-00 × 21	3-00 × 21	100/80 × 21	100/90 × 21	3-00 × 21
Rear tyre	5-10 × 18	140/90 × 18	150/80 × 18	140/80 × 18	4-10 × 18
Front brake	sls drum	tls drum	tls drum	tls drum (disc)*	sls drum
Rear brake	sls drum	sls drum	sls drum	sls drum	sls drum
Rear suspension	monoshock (3)	monoshock (4)	monoshock (5)	monoshock (5)	monoshock (2)
Front suspension travel (mm)	284 (300)*	300	300	300	180 (200)*
Rear suspension travel (mm)	298 (310)*	320	325	320	200
Rake (°)	30 (28.5)*	28.5	28.5	28.5	28.5
Trail (mm)	132 (120)*	120	119	120	120
Width (mm)	935 (880)*	870	850	850	284 (300)*
Ground clearance (mm)	310 (320)*	320	330	335	1365
Wheelbase (mm)	1480	1500	1500	1475	92.5 (91.5)*
Dry weight (kg)	103 (105)*	108	103	104	—

\* = YZ465H

\* = Non-USA

\* = YZ490N

\* = IT125H

Model	<b>IT175D/E</b>	<b>IT175F</b>	<b>IT175G/H</b>	<b>IT175J/K</b>	<b>IT200L/N</b>
Year	<b>1977-1978</b>	<b>1979</b>	<b>1980-1981</b>	<b>1982-1983</b>	<b>1984-1985</b>
Chassis/engine id.	1W2	2W6	3R6-000101/ 3R6-020101/ 4J0-000101/ 4J0-010101*	5X8*/5X9**/ 5Y0***	43G*/49T**/ 49U***
Bore (mm)	66	66	66	66	66
Stroke (mm)	50	50	50	50	57
Capacity (cc)	171	171	171	171	195
Compression ratio (to 1)	7-4	7-5	7-9	7-7	8-4
bhp @ rpm	21.5 @ 9500	20.6 @ 8500	19.86 @ 8000	22.73 @ 8500	21.5 @ 7500
Torque (kg) @ rpm	1-73 @ 8000	1-78 @ 7500	1-88 @ 7500	2-08 @ 7500	2-19 @ 7000
Oil system	mix	mix	mix	mix	mix
Engine cooling	air	air	air	air	air
Carburettor (mm)	VM34SC	VM34SS	VM32SS	VM34SS	VM34SS
Ignition system	CDI	CDI	CDI	CDI	CDI
Ignition timing (mm)	—	—	—	—	—
Primary drive gearing	3-23	3-23	3-06	3-06	2-90
Final drive gearing	41/12	41/12	44/12	44/12	44/12
Box gearing first	3-10	3-09	3-09	2-75	2-75
Box gearing second	2-06	2-07	2-08	1-86	1-86
Box gearing third	1-50	1-50	1-50	1-50	1-50
Box gearing fourth	1-18	1-19	1-19	1-25	1-25
Box gearing fifth	1-00	1-00	1-00	1-11	1-08
Box gearing sixth	0-84	0-84	0-82	0-91	0-86
Fuel (l)	9.5	9.5	11	12	11
Engine oil (l)	—	—	—	—	—
Transmission oil (l)	0.65	0.65	0.7	0.7	0.8
Front fork oil (cc/leg)	—	—	—	—	—
Front tyre	3-00 × 21	3-00 × 21	3-00 × 21	3-00 × 21	90/90 × 21
Rear tyre	4-10 × 18	4-10 × 18	4-10 × 18	110/90 × 18	120/90 × 18
Front brake	sls drum	sls drum	sls drum	sls drum	sls drum
Rear brake	sls drum	sls drum	sls drum	sls drum	sls drum
Rear suspension	monoshock (2)	monoshock (2)	monoshock (3)	monoshock (4)	monoshock (5)
Front suspension travel (mm)	175	195	250	260	270
Rear suspension travel (mm)	175	210	250	285	270
Rake (°)	32	29.5	28.5	28.5	28
Trail (mm)	144	127	122	125	115
Width (mm)	851	851	805	805	820
Ground clearance (mm)	254	269	290	330	340
Wheelbase (mm)	1410	1375	1420	1430	1440
Dry weight (kg)	96	95.5	93.5	98	93

\* = Australia

\* = US &amp; Canada

\*\* = Australasia

\*\*\* = Europe

\* = Australasia

\*\* = US

\*\*\* = Europe



Model	IT250D	IT250E	IT250F/G	IT250H/J	IT250K
Year	1977	1978	1979-1980	1981-1982	1983
Chassis/engine id.	1W5	2K9	2X7/3R7	4V5	25Y/29V*
Bore (mm)	70	70	70	70	68
Stroke (mm)	64	64	64	64	68
Capacity (cc)	246	246	246	246	246
Compression ratio (to 1)	7.84	7.8	7.9	7.8	7.7
bhp @ rpm		26.1 @ 7500	27.7 @ 8000	32 @ 7500	30 @ 7500
Torque (kgm) @ rpm		2.65 @ 7000	2.51 @ 8000	3.12 @ 7500	2.88 @ 7500
Oil system	mix	mix	mix	mix	mix
Engine cooling	air	air	air	air	air
Carburettor (mm)	VM36SS	VM36SC	VM36SC	VM36SC	VM38SS
Ignition system	CDI	CDI	CDI	CDI	CDI
Ignition timing (mm)	2.3	2.3			
Primary drive gearing	2.67	2.66	2.5 (2.61)*	2.63	2.63
Final drive gearing	46/15	46/14	48/13	50/13	48/13
Box gearing first	2.29	2.71	2.66	2.67	2.67
Box gearing second	1.71	2.07	2.00	2.00	1.93
Box gearing third	1.30	1.60	1.56	1.56	1.50
Box gearing fourth	1.00	1.26	1.25	1.25	1.20
Box gearing fifth	0.84	1.05	1.04	1.05	1.00
Box gearing sixth	—	0.92	0.87	0.87	0.83
Fuel (l)	12	12	12	13	13.5
Engine oil (l)	—	—	—	—	—
Transmission oil (l)	1.2	1.1	1.2	0.85	0.75
Front fork oil (cc/leg)	250	250	250		
Front tyre	3.00 × 21	3.00 × 21	3.00 × 21	3.00 × 21	3.00 × 21
Rear tyre	4.50 × 18	4.50 × 18	4.50 × 18 (5.10 × 18)*	5.10 × 18	140/90 × 18
Front brake	sls drum	sls drum	sls drum	sls drum	tls drum
Rear brake	sls drum	sls drum	sls drum	sls drum	sls drum
Rear suspension *	monoshock (2)	monoshock (2)	monoshock (2)	monoshock (3)	monoshock (5)
Front suspension travel (mm)	210	210	230 (250)*	270	300
Rear suspension travel (mm)	180	180	205 (250)*	270	300
Rake (°)	31.5	31.5	29.5	29	28
Trail (mm)	142	142	122 (125)*	126	118
Width (mm)	832	832	860		
Ground clearance (mm)	240	240	275 (300)*	295	305
Wheelbase (mm)	1430	1430	1420 (1430)*	1450	1485
Dry weight (kg)	115	109	108 (106)*	106.5	108

\* = IT250G

\* = Non-USA

Model	IT400C	IT400D/E	IT400F	IT425G
Year	1976	1977-1978	1979	1980
Chassis/engine id.	1K7	1W6	2X8	3R8
Bore (mm)	85	85	82	85
Stroke (mm)	70	70	75	75
Capacity (cc)	397	397	397	425
Compression ratio (to 1)	7.57	7.59	7.4	7.3
bhp @ rpm	32.5 @ 8000		36.7 @ 6500	36.95 @ 6500
Torque (kgm) @ rpm	3.1 @ 7500		4.09 @ 6500	4.23 @ 6000
Oil system	mix	mix	mix	mix
Engine cooling	air	air	air	air
Carburettor (mm)	VM38SS	VM38SS	VM38SS	VM38SS
Ignition system	CDI	CDI	CDI	CDI
Ignition timing (mm)		2.7		
Primary drive gearing	2.70	2.67	2.61	2.61
Final drive gearing	46/15	46/15	46/14	48/13
Box gearing first	2.54	2.54	2.67	2.67
Box gearing second	1.71	1.71	1.75	1.75
Box gearing third	1.30	1.30	1.32	1.32
Box gearing fourth	1.00	1.00	1.00	1.00
Box gearing fifth	0.77	0.77	0.79	0.79
Box gearing sixth	—	—	—	—
Fuel (l)	12	12	12	12
Engine oil (l)	—	—	—	—
Transmission oil (l)	1.0	1.2	0.8	0.85
Front fork oil (cc/leg)		250		
Front tyre	3.00 × 21	3.00 × 21	3.00 × 21	3.00 × 21
Rear tyre	4.50 × 18	4.50 × 18	4.50 × 18	5.10 × 18
Front brake	sls drum	sls drum	sls drum	sls drum
Rear brake	sls drum	sls drum	sls drum	sls drum
Rear suspension	monoshock (1)	monoshock	monoshock (2)	monoshock (2)
Front suspension travel (mm)	210	210	230	250
Rear suspension travel (mm)	180	180	205	250
Rake (°)	31.5	31.5	29.5	29.5
Trail (mm)	138	142	122	125
Width (mm)	864	832		
Ground clearance (mm)	250	240	275	285
Wheelbase (mm)	1425	1430	1420	1430
Dry weight (kg)	115	115	112	111

Model	IT465H/J	IT490K/L
Year	1981-1982	1983-1984
Chassis/engine id.	4V6	26A-000101/26A-100101/29W-000101/ 29W-003101*/045K-000101**
Bore (mm)	85	87
Stroke (mm)	82	82
Capacity (cc)	465	487
Compression ratio (to 1)	7-1	6-7
bhp @ rpm		34.65 @ 6500
Torque (kgm) @ rpm		4.23 @ 5500
Oil system	mix	mix
Engine cooling	air	air
Carburettor (mm)	VM38SS	VM38SS
Ignition system	CDI	CDI
Ignition timing (mm)		
Primary drive gearing	2-63	2-63
Final drive gearing	44/14	44/14
Box gearing first	2-67	2-67
Box gearing second	1-75	1-75
Box gearing third	1-32	1-32
Box gearing fourth	1-00	1-00
Box gearing fifth	0-79	0-79
Box gearing sixth	—	—
Fuel (l)	13	13.5
Engine oil (l)	—	—
Transmission oil (l)	0.8	0.8
Front fork oil (cc/leg)		
Front tyre	3-00 × 21	3-00 × 21
Rear tyre	5-60 × 18	150/80 × 18
Front brake	tls drum	tls drum
Rear brake	sls drum	sls drum
Rear suspension	monoshock (3)	monoshock (5)
Front suspension travel (mm)	267	300
Rear suspension travel (mm)	272	300
Rake (°)	28.5	28
Trail (mm)	122	118
Width (mm)		
Ground clearance (mm)	311	330
Wheelbase (mm)	1475	1485
Dry weight (kg)	112	112.7

\* = Non-USA

\*\* = Europe 1984

Model	XT125J/K/L	XT200J/K/L	XT250G/H/J/K	TT250G/H/J/K	XT250L/N
Year	1982-1984	1982-1984	1980-1983	1980-1983	1984-1985
Chassis/engine id.	15E <sup>1</sup> /12V <sup>2</sup> /15W <sup>3</sup> / 16A <sup>4</sup>	15A	3Y1 <sup>1</sup> /3Y2 <sup>2</sup> /3Y3 <sup>3</sup>	3Y0 <sup>1</sup> /16E <sup>2</sup>	42U
Bore (mm)	57	67	75	75	73
Stroke (mm)	48.8	55.7	56.5	56.5	59.6
Capacity (cc)	124	196	249	249	249
Engine type	SOHC	SOHC	SOHC	SOHC	DOHC
bhp @ rpm	12 @ 9000	13.0 @ 8500	21 @ 8000	23 @ 8000	
Torque (kgm) @ rpm	1.0 @ 8000	1.61 @ 7000	2.0 @ 6500	2.15 @ 7000	2.5 @ 6500
Compression ratio (to 1)	10	9.5	9.2	9.2	9.5
Carburettor (mm)	TKY24P	TKY24PV	VM28SS	VM30SS	TKY22PV (YDIS)
Ignition timing R (*BTDC < rpm)	9 < 1300		7 < 1200	7 < 1200	12 < 1200
Ignition timing A (*BTDC > rpm)	29 > 2600			32 > 4800	34 > 5000
Ignition system	CDI	CDI	CDI	CDI	CDI
Inlet valve opens (*BTDC)	28	32	28	32	34
Inlet valve closes (*ABDC)	60	72	68	72	62
Exhaust valve opens (*BBDC)	64	68	64	68	70
Exhaust valve closes (*ATDC)	24	36	32	36	26
Primary drive gearing	3-32	3-32	3-13	3-13	3-13
Final drive gearing	50/14	48/15	46/16	51/15	52/19
Box gearing first	2-83	2-83	2-64	2-64	2-47
Box gearing second	1-79	1-79	1-68	1-68	1-81
Box gearing third	1-32	1-32	1-26	1-26	1-36
Box gearing fourth	1-04	1-04	1-00	1-00	1-08
Box gearing fifth	0-82	0-82	0-82	0-82	0-89
Box gearing sixth	—	—	—	—	0.78
Fuel (l)	7.3	8.5	8.25	7.2	12
Engine oil (l)	1.3	1.3	1.6	1.6	1.6
Front fork oil (cc)	249		269	318	319
Front tyre	2-75 × 21	2-75 × 21	3-00 × 21	3-00 × 21	3-00 × 21
Rear tyre	4-10 × 18	100/80 × 17	4-00 × 18	5-10 × 17	110/80 × 18
Front brake	sls drum	sls drum	sls drum	sls drum	disc
Rear brake	sls drum	sls drum	sls drum	sls drum	drum
Rear suspension	monoshock (3)	monoshock (3)	monoshock (3)	monoshock (3)	monoshock (5)
Front suspension travel (mm)	205	255	205	230	250
Rear suspension travel (mm)	180	175	180	205	220
Rake (°)	27.8	28.8	39.5	28.5	27.3
Trail (mm)	110	120	116	120	107
Wheelbase (mm)	1330	1335	1395	1400	1420
Ground clearance (mm)	265	265	265	280	275
Dry weight (kg)	98	103	113	113	120

1 = US XT125J/K

2 = European XT125J

3 = Canadian XT125J/K/L

4 = Australian XT125J

1 = US XT250G/H

2 = Canadian XT250G/H

3 = European XT250G/H

1 = TT250G/H

2 = TT250J/K



Model	XT350N	XT500C/TT500C	XT500D/E/F/G + 1977-1980 +	TT500D/E	TT500F/G/H
Year	1985	1976	1977-1980 +	1977-1978	1979-1981
Chassis/engine id.	55V	1E6/583	1E6 <sup>1</sup> /3H6 <sup>2</sup> /4R9 <sup>3</sup> / 1U6 <sup>4</sup> /2H2 <sup>5</sup> /3H7 <sup>6</sup>	1T1	1T1/2Y0
Bore (mm)	86	87	87	87	87
Stroke (mm)	59.6	84	84	84	84
Capacity (cc)	346	499	499	499	499
Engine type	DOHC	SOHC	SOHC	SOHC	SOHC
bhp @ rpm	31 @ 7500	27.6 @ 5500	32 @ 6500	32 @ 6000	33 @ 6000
Torque (kgm) @ rpm	3 @ 7000	3.64	4 @ 5500	3.9 @ 5500	4.0 @ 5500
Compression ratio (to 1)	9.5	9	9	9	9
Carburettor (mm)	TKY24PV	VM345S	VM325S	VM345S/VM325S	VM345S
Ignition timing R (*BTDC < rpm)	12 < 1200	7 < 2250	7 < 1100	7 < 2250	7 < 2250
Ignition timing A (*BTDC > rpm)	34 > 5000	27 > 3000	27 > 3000	27 > 3000	27 > 3000
Ignition system	CDI	magneto	magneto	magneto	CDI
Inlet valve opens (*BTDC)	30	44	44	44	44
Inlet valve closes (*ABDC)	58	68	68	68	68
Exhaust valve opens (*BBDC)	66	76	76	76	76
Exhaust valve closes (*ATDC)	22	36	36	36	36
Primary drive gearing	3-13	2-57	2-57	2-57	2-57
Final drive gearing	55/19	44/16 / 52/15	44/16	50/15	50/15
Box gearing first	2-47	2-36	2-36	2-36	2-36
Box gearing second	1-81	1-56	1-56	1-56	1-56
Box gearing third	1-36	1-19	1-19	1-19	1-19
Box gearing fourth	1-08	0-92	0-92	0-92	0-92
Box gearing fifth	0-89	0-78	0-78	0-78	0-78
Box gearing sixth	0-76	—	—	—	—
Fuel (l)	12	8.7	8.5	8.5	8.5
Engine oil (l) †	1.6	2.5	2.4	2.5	2.4
Front fork oil (cc)	319	217	238	223	247
Front tyre	3-00 × 21	3-00 × 21	3-00 × 21	3-00 × 21	3-00 × 21
Rear tyre	110/80 × 18	4-00 × 18/4-60 × 18	4-00 × 18	4-60 × 18	4-60 × 18
Front brake	disc	sls drum	sls drum	sls drum	sls drum
Rear brake	sls drum	sls drum	sls drum	sls drum	sls drum
Rear suspension	monoshock (5)	twin shock	twin shock	twin shock	twin shock
Front suspension travel (mm)	255	195	195	195	195
Rear suspension travel (mm)	220	145	160	159	159
Rake (°)	27.2	30.5	29.5/29	30	29.4
Trail (mm)	107	135	135/123	132	125
Wheelbase (mm)	1420	1420	1420/1415	1426	1420
Ground clearance (mm)	274	216	225/215	235	230
Dry weight (kg)	133	138/123	139	123	123

1=US XT500D/E/F  
2=US XT500G  
3=US XT500H  
4=European XT500D/E/F  
5=Canada/Australia  
XT500E/F  
6=Canada/Australia  
XT500G

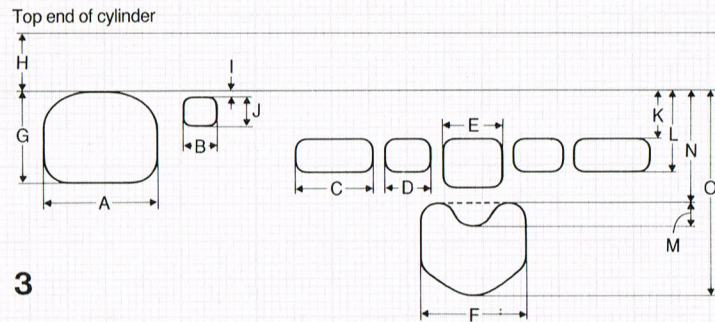
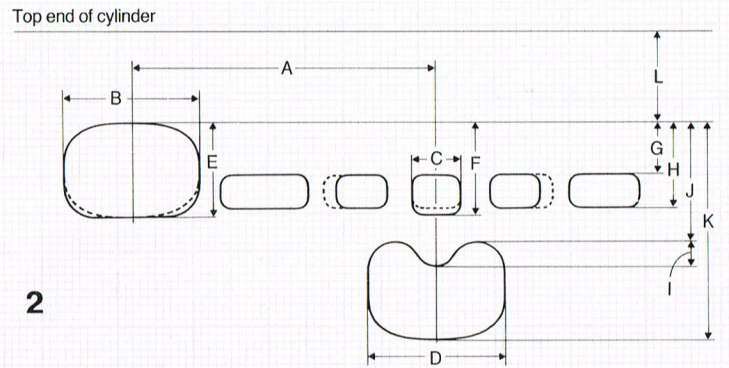
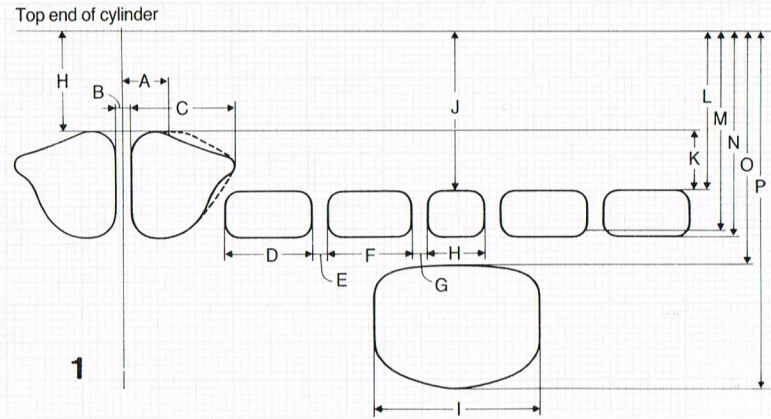
Model	XT550J/K	XT600L/N	TT600K/L/N	HL500
Year		1984-1985	1983-1985	1978-1979
Chassis/engine id.	5Y1 <sup>1</sup> /5Y2 <sup>2</sup> /5Y3 <sup>3</sup> / 5Y4 <sup>4</sup>	43F <sup>1</sup> /49L <sup>2</sup> /49M <sup>3</sup> / 49N <sup>4</sup> /49R <sup>5</sup>	34K <sup>1</sup> /36A <sup>2</sup>	3K4
Bore (mm)	92	95	95	87
Stroke (mm)	84	84	84	84
Capacity (cc)	558	595	595	499
Engine type	SOHC	SOHC	SOHC	SOHC
bhp @ rpm	33 @ 7100	44 @ 6500	22 @ 6000 (*)	
Torque (kgm) @ rpm		5.05 @ 5500	43 @ 2000	
Compression ratio (to 1)	8.5	8.5	8.5	9
Carburettor (mm)	TKY26 (YDIS)	TKY27PV	TKY27PV	VM365C/VM385C
Ignition timing R (*BTDC < rpm)	12 < 1200	12 < 1200	12 < 1200	
Ignition timing A (*BTDC > rpm)	35 > 6000	36 > 4500	36 > 4500	
Ignition system	CDI	CDI	CDI	magneto/CDI
Inlet valve opens (*BTDC)	30	28	30	
Inlet valve closes (*ABDC)	66	64	66	
Exhaust valve opens (*BBDC)	66	64	70	
Exhaust valve closes (*ATDC)	30	30	34	
Primary drive gearing	2-53	2-39	2-39	2-57
Final drive gearing	42/15	40/15	50/14	48/15
Box gearing first	2-31	2-58	2-31	2-36
Box gearing second	1-59	1-59	1-56	1-56
Box gearing third	1-2	1-2	1-2	1-19
Box gearing fourth	0-95	0-95	0-96	0-92
Box gearing fifth	0-78	0-78	0-78	0-78
Box bearing sixth	—	—	—	—
Fuel (l)	11.4	11	11	5.5
Engine oil (l)	2.4	2.4	2.4	2.7
Front fork oil (cc)	369	483	578/589	364
Front tyre	3-00 × 21	3-00 × 21	100/80 × 21	3-00 × 21
Rear tyre	4-60 × 18	4-60 × 18	140/80 × 18	5-00 × 18
Front brake	sls drum	disc	tl's drum/disc	sls drum
Rear brake	sls drum	sls drum	sls drum	sls drum
Rear suspension	monoshock (3)	monoshock (5)	monoshock (5)	twin shock
Front suspension travel (mm)	205	255	300	250/270
Rear suspension travel (mm)	190	235	270	250/260
Rake (°)	28.2	28	28	30
Trail (mm)	115	107	118	130
Wheelbase (mm)	1400	1435	1485	1430
Ground clearance (mm)	260	260	300	330
Dry weight (kg)	136.5	137	124	115

1=US XT550J/K  
2=Canadian XT550J/K  
3=European XT550J  
4=Australian XT550J/K

1=European XT600L  
2=Australian XT600L  
3=Canadian XT600L  
4=American XT600L  
5=American XT600N

1=US/Canada TT600K/L  
2=Australia TT600K/L  
\* = European spec for  
homologation

# Port profiles and dimensions



	A	B	C	D	E	F	G	H	I	J	K	L	M	N	O	P
<b>1</b> ——— YZ250G	-	3.95	32.1	27.4	-	26.3	-	18	49	52.95	-	52.55	65.7	65.85	77	114.9
----- YZ250H	15	4	24.5	27	5	27	6	18	49	-	17	51	-	65.5	77	115.5
<b>2</b> ----- YZ250J	180	48	-	49	35.3	-	20	33.5	10	45.5	81	31.5				
———— YZ250K	180	48	18	48	37	38	21.5	36	10	54.5	90	33.7				
<b>3</b> ——— YZ250L	46	9	32	16	18	40	35	35	0.5	9.5	19	34	10	36	88	
----- YZ250N	46	9.5	31.7	16.9	18	40	35	35	-	7.5	19	34	-	52	88	